

FD. L&T PER  
CEFB 322-199

FD. L&T PER  
CEFB 322-199

FD. L&T PER  
CEFB 322-199

FD. TWO S & W  
RCE 16362 BEFORE  
CONSTRUCTION  
RESET TWO S & W  
LS 4016

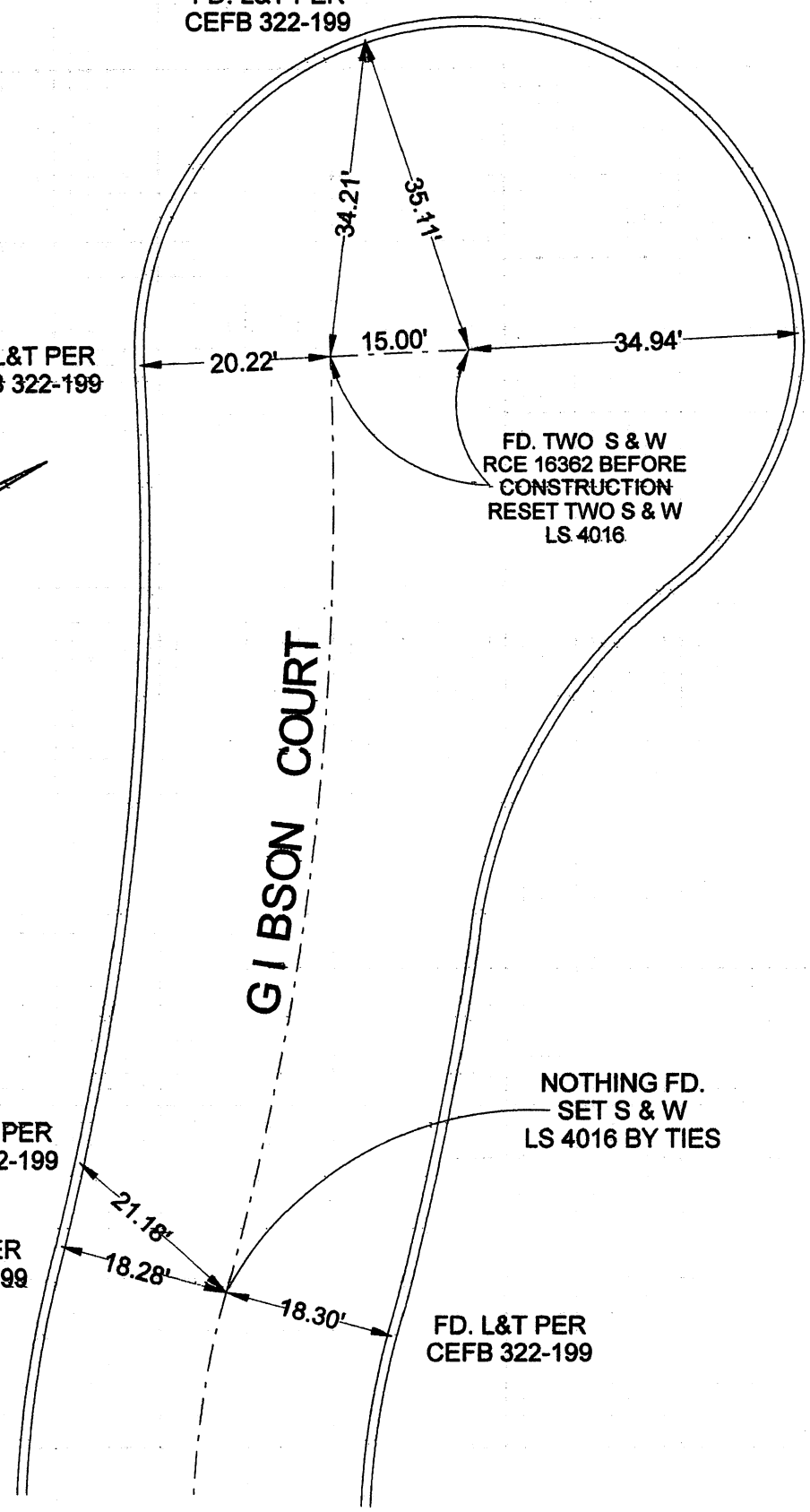
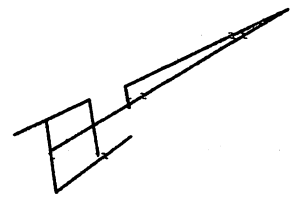
GIBSON COURT

NOTHING FD.  
SET S & W  
LS 4016 BY TIES

FD. L&T PER  
CEFB 322-199

FD. L&T PER  
CEFB 322-199

FD. L&T PER  
CEFB 322-199



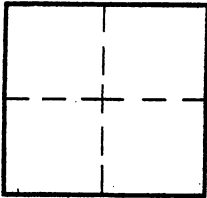
# CORNER RECORD

Document Number \_\_\_\_\_

City of BURBANK

County of Los Angeles, California

Brief Legal Description GIBSON COURT CUL-DE-SAC W/O TUJUNGA AVENUE



### CORNER TYPE

Govt. Corner  Control   
 Meander  Property   
 Rancho  Other   
 Date of Survey 7/07/16

### COORDINATES (Optional)

N. \_\_\_\_\_  
 E. \_\_\_\_\_  
 Zone \_\_\_\_\_ NAD27  NAD83   
 NAD83 Epoch \_\_\_\_\_  
 Elev. \_\_\_\_\_  
 Vert. Datum: NGVD29  NAVD88   
 Meas. Units: Metric  Imperial

Corner - Left as found  Found & tagged  Established  Reestablished  Rebuilt

Identification and type of corner found: Evidence used to identify or procedure used to establish or reestablish the corner:  
TIED OUT AS FOUND BEFORE CONSTRUCTION

A description of the physical condition of the monument as found and as set or reset: \_\_\_\_\_

ALL FOUND TIES IN GOOD CONDITION

### SURVEYOR'S STATEMENT

This Corner Record was prepared by me or under my direction in conformance  
 with the Land Surveyors' Act on JULY 15, 2016

Signed David L. Lindell P.L.S. or R.C.E. No. LS 4016



### COUNTY SURVEYOR'S STATEMENT

This Corner Record was received \_\_\_\_\_

and examined and filed \_\_\_\_\_

Signed \_\_\_\_\_ P.L.S. or R.C.E. No. \_\_\_\_\_

Title: \_\_\_\_\_

County Surveyor's Comment \_\_\_\_\_