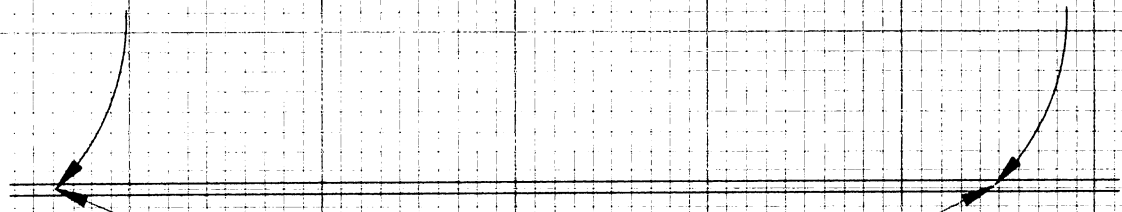


FD. L&T WITH  
CHIS'D "T" PER  
CEFB 331-144

FD. L & CE TAG  
PER CEFB 331-144



TULARE

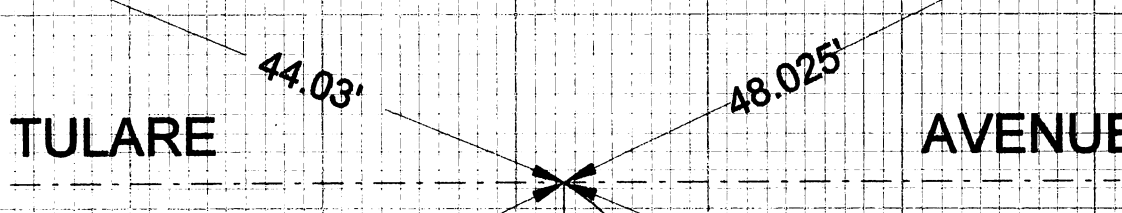
AVENUE

44.03'

48.025'

47.965'

45.08'

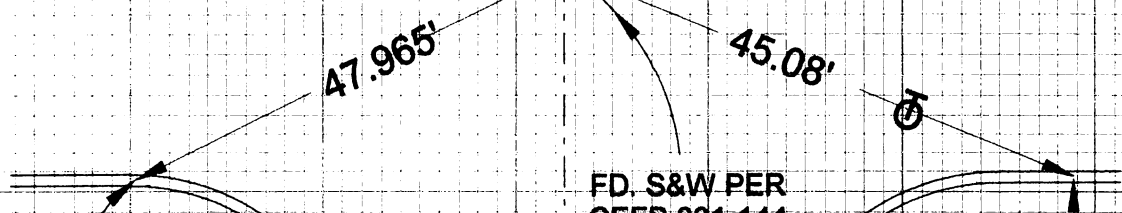


SPARKS  
STREET

FD. L & CE TAG  
PER CEFB 331-144

FD. S&W PER  
CEFB 331-144  
RESET S&W  
LS 4016

FD. L & CE TAG  
PER CEFB 331-144



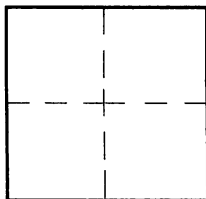
# CORNER RECORD

Document Number \_\_\_\_\_

City of BURBANK

County of Los Angeles, California

Brief Legal Description TULARE AVENUE & SPARKS STREET



### CORNER TYPE

Govt. Corner  Control   
 Meander  Property   
 Rancho  Other   
 Date of Survey 6/10/16

### COORDINATES (Optional)

N. \_\_\_\_\_  
 E. \_\_\_\_\_  
 Zone \_\_\_\_\_ NAD27  NAD83   
 NAD83 Epoch \_\_\_\_\_  
 Elev. \_\_\_\_\_  
 Vert. Datum: NGVD29  NAVD88   
 Meas. Units: Metric  Imperial

Corner - Left as found  Found & tagged  Established  Reestablished  Rebuilt

Identification and type of corner found: Evidence used to identify or procedure used to establish or reestablish the corner:  
TIED OUT AS FOUND BEFORE CONSTRUCTION

A description of the physical condition of the monument as found and as set or reset: \_\_\_\_\_

ALL FOUND TIE POINTS IN GOOD CONDITION

### SURVEYOR'S STATEMENT

This Corner Record was prepared by me or under my direction in conformance  
 with the Land Surveyors' Act on JULY 5, 2016

Signed David L. Lindell P.L.S. or R.C.E. No. LS 4016



### COUNTY SURVEYOR'S STATEMENT

This Corner Record was received \_\_\_\_\_

and examined and filed \_\_\_\_\_

Signed \_\_\_\_\_ P.L.S. or R.C.E. No. \_\_\_\_\_

Title: \_\_\_\_\_

County Surveyor's Comment \_\_\_\_\_