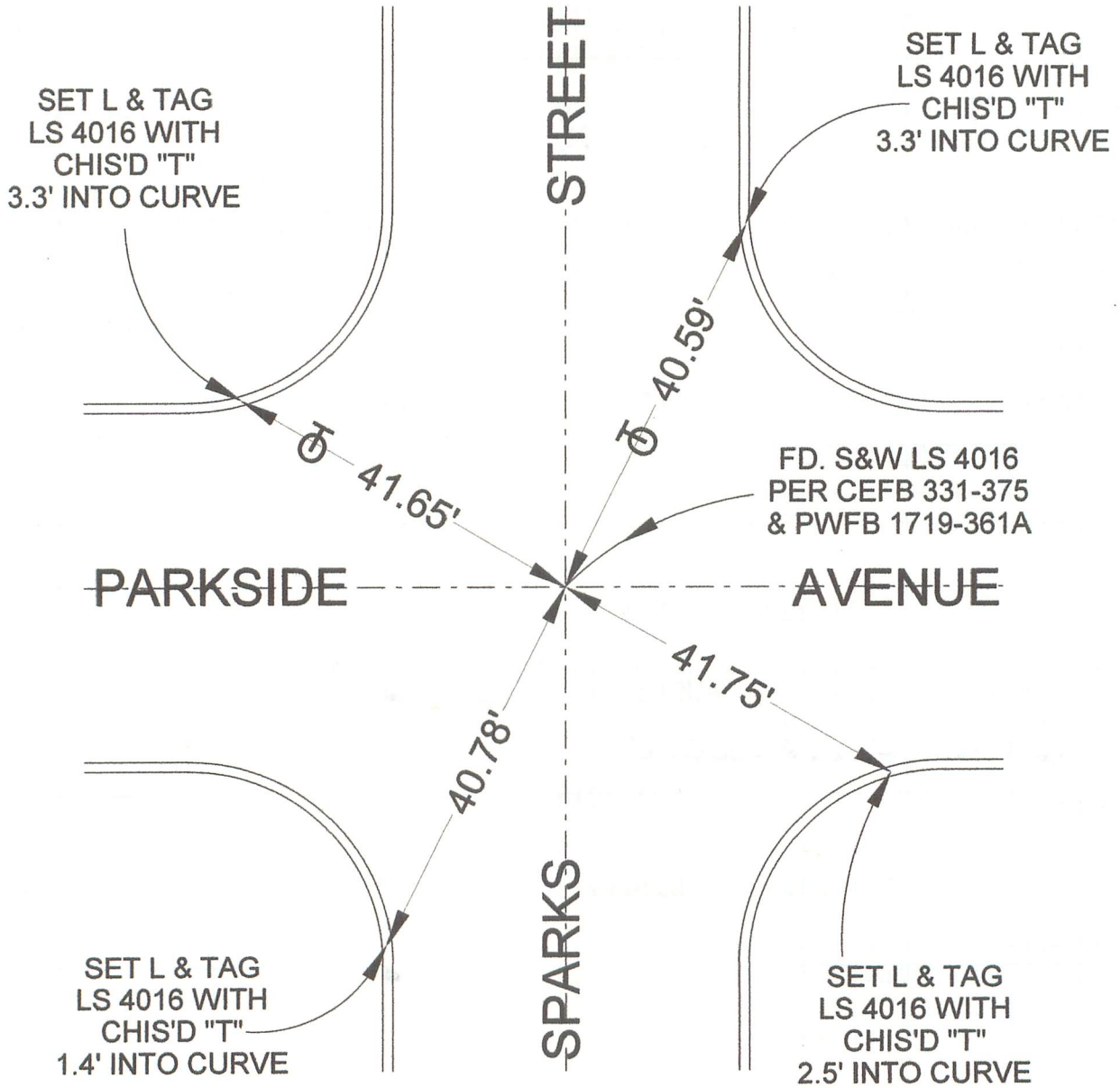




OLD TIES PER CEFB 331-375  
& PWFB 1719-361A TO BE  
DESTROYED BY NEW RAMPS



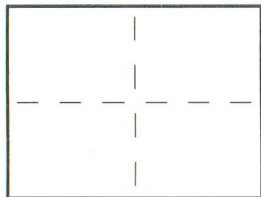
# CORNER RECORD

INDEX \_\_\_\_\_ PAGE \_\_\_\_\_

City of BURBANK

County of Los Angeles, California

Brief Legal Description: SPARKS STREET & PARKSIDE AVENUE



### CORNER TYPE

COORDINATES  
(optional)

- Govt. Corner
- Meander
- Rancho
- Date of Survey: 7/16/15
- Control
- Property
- Other

N. \_\_\_\_\_  
 E. \_\_\_\_\_  
 Zone \_\_\_\_\_ Datum \_\_\_\_\_  
 Elev. \_\_\_\_\_

- Corner —
- Left as Found
  - Reestablished
  - Found & Tagged
  - Rebuilt
  - Established

Identification & Type of Corner Found: Evidence used to identify or procedure used to establish or reestablish the corner.

SEE PLAT

A Description of the Physical Condition of the Monument as Found and as Set or Reset: \_\_\_\_\_

SEE PLAT

### Surveyor's Statement

This Corner Record was Prepared by Me or Under My Direction in Conformance with the Land Surveyors Act on AUGUST 4, 2015

Signed: David L. Lindell

L.S. or R.C.E. No.: LS 4016



### County Surveyor's Statement

This Corner Record was Received \_\_\_\_\_ and Examined and Filed \_\_\_\_\_

Signed: \_\_\_\_\_

Title: \_\_\_\_\_

County Surveyor's Comment: \_\_\_\_\_

T.G. 563-G-3