

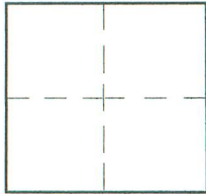
# CORNER RECORD

Document Number \_\_\_\_\_

City of BURBANK

County of Los Angeles, California

Brief Legal Description CENTERLINE INTERSECTION OF MAPLE STREET AND THE ALLEYS SOUTH OF CHANDLER BLVD. AND NORTH OF MAGNOLIA BLVD.



### CORNER TYPE

Govt. Corner  Control   
 Meander  Property   
 Rancho  Other   
 Date of Survey OCTOBER 24 2015

### COORDINATES (Optional)

N. \_\_\_\_\_  
 E. \_\_\_\_\_  
 Zone \_\_\_\_\_ NAD27  NAD83   
 NAD83 Epoch \_\_\_\_\_  
 Elev. \_\_\_\_\_  
 Vert. Datum: NGVD29  NAVD88   
 Meas. Units: Metric  Imperial

Corner - Left as found  Found & tagged  Established  Reestablished  Rebuilt

Identification and type of corner found: Evidence used to identify or procedure used to establish or reestablish the corner:

THE PURPOSE OF THIS SURVEY WAS TO SATISFY THE REQUIREMENTS FOR THE FILING OF PARCEL MAP NO. 72650.

A description of the physical condition of the monument as found and as set or reset: \_\_\_\_\_

SEE PAGE 2

### SURVEYOR'S STATEMENT

This Corner Record was prepared by me or under my direction in conformance

with the Land Surveyors' Act on OCTOBER 24 2015

Signed [Signature] P.L.S. or R.C.E. No. 5748



### COUNTY SURVEYOR'S STATEMENT

This Corner Record was received \_\_\_\_\_

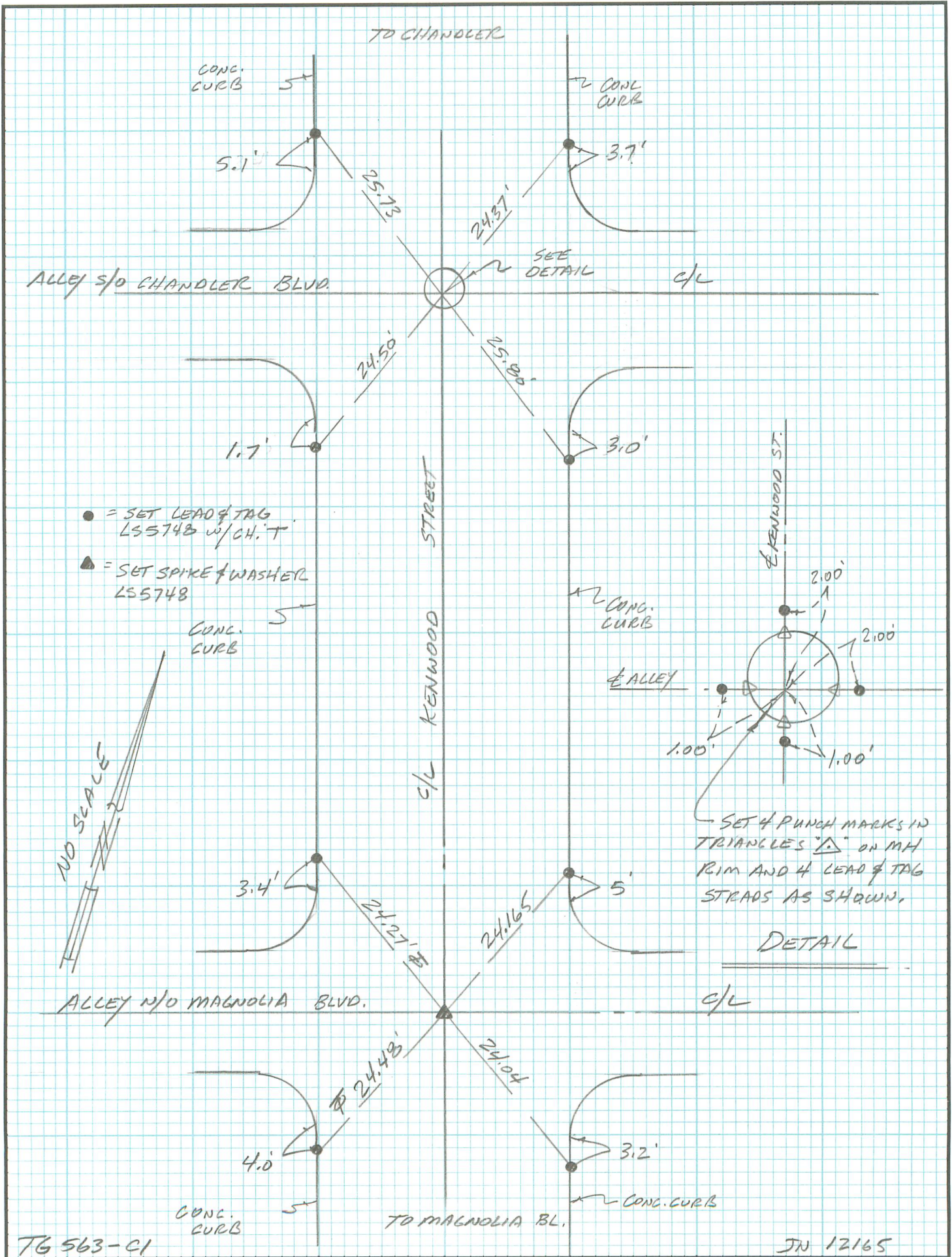
and examined and filed \_\_\_\_\_

Signed \_\_\_\_\_ P.L.S. or R.C.E. No. \_\_\_\_\_

Title: \_\_\_\_\_



County Surveyor's Comment \_\_\_\_\_



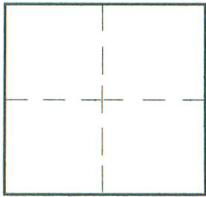
# CORNER RECORD

Document Number \_\_\_\_\_

City of BURBANK

County of Los Angeles, California

Brief Legal Description CENTERLINE INTERSECTION OF KENWOOD STREET AND THE ALLEYS SOUTH OF CHANDLER BLVD. AND NORTH OF MAGNOLIA BLVD.



### CORNER TYPE

Govt. Corner  Control   
 Meander  Property   
 Rancho  Other   
 Date of Survey OCT 21 + 24, 2015

### COORDINATES (Optional)

N. \_\_\_\_\_  
 E. \_\_\_\_\_  
 Zone \_\_\_\_\_ NAD27  NAD83   
 NAD83 Epoch \_\_\_\_\_  
 Elev. \_\_\_\_\_  
 Vert. Datum: NGVD29  NAVD88   
 Meas. Units: Metric  Imperial

Corner - Left as found  Found & tagged  Established  Reestablished  Rebuilt

Identification and type of corner found: Evidence used to identify or procedure used to establish or reestablish the corner:  
THE PURPOSE OF THIS SURVEY WAS TO SATISFY THE REQUIREMENTS FOR THE FILING OF PARCEL MAP NO. 72650.

A description of the physical condition of the monument as found and as set or reset: \_\_\_\_\_

SEE PAGE 2

### SURVEYOR'S STATEMENT

This Corner Record was prepared by me or under my direction in conformance with the Land Surveyors' Act on OCTOBER 24 2015

Signed [Signature] P.L.S. or R.C.E. No. 5748



### COUNTY SURVEYOR'S STATEMENT

This Corner Record was received \_\_\_\_\_

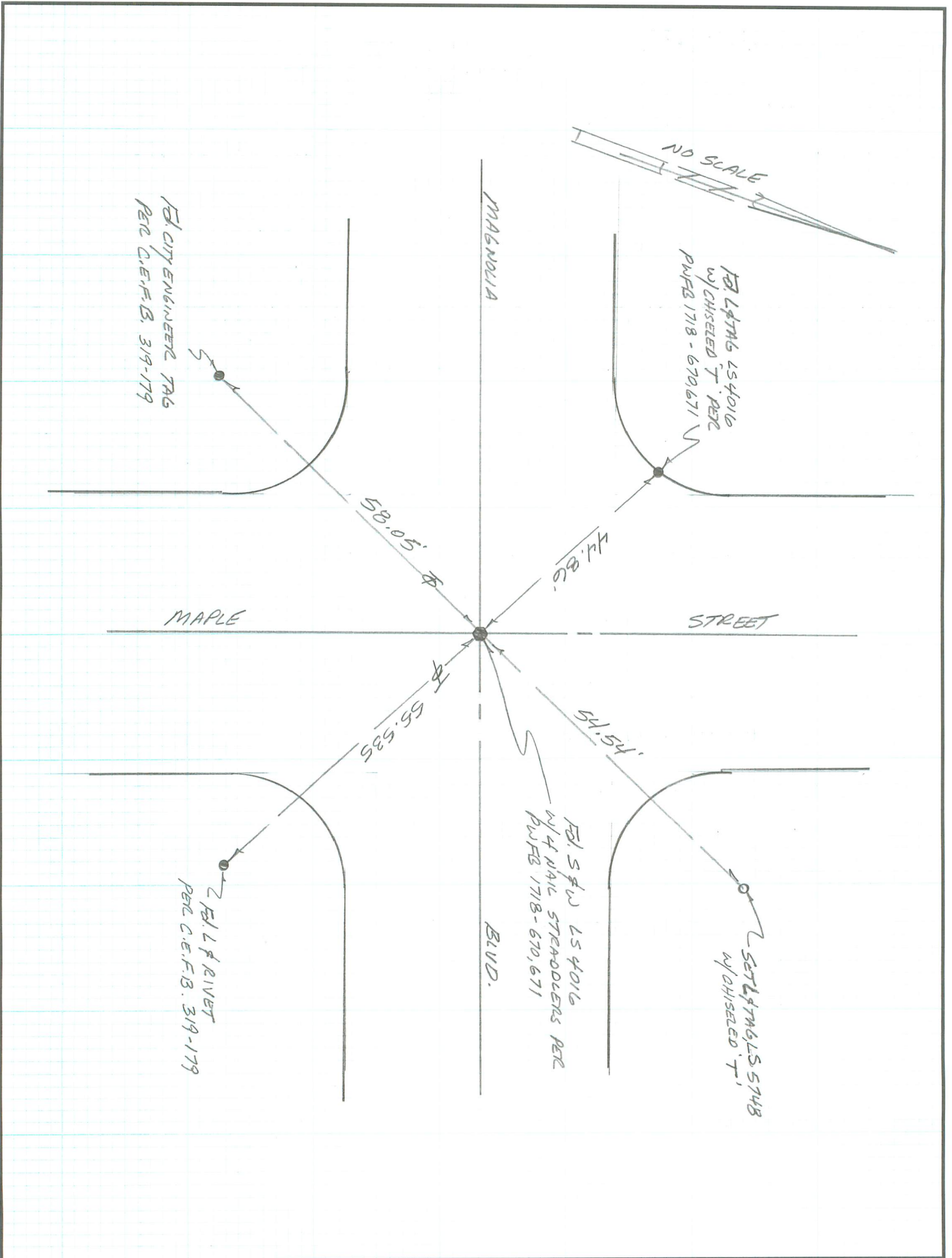
and examined and filed \_\_\_\_\_

Signed \_\_\_\_\_ P.L.S. or R.C.E. No. \_\_\_\_\_

Title: \_\_\_\_\_

County Surveyor's Comment \_\_\_\_\_





# CORNER RECORD

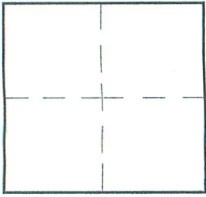
Document Number \_\_\_\_\_

City of BURBANK

County of Los Angeles, California

CENTERLINE INTERSECTION OF MAPLE STREET AND MAGNOLIA BLVD.

Brief Legal Description \_\_\_\_\_



### CORNER TYPE

Govt. Corner  Control   
 Meander  Property   
 Rancho  Other   
 Date of Survey DEC. 16 2014

### COORDINATES (Optional)

N. \_\_\_\_\_  
 E. \_\_\_\_\_  
 Zone \_\_\_\_\_ NAD27  NAD83   
 NAD83 Epoch \_\_\_\_\_  
 Elev. \_\_\_\_\_  
 Vert. Datum: NGVD29  NAVD88   
 Meas. Units: Metric  Imperial

Corner - Left as found  Found & tagged  Established  Reestablished  Rebuilt

Identification and type of corner found: Evidence used to identify or procedure used to establish or reestablish the corner:

PERPETUATION OF THE CITY OF BURBANK SPIKE AND WASHER AT  
THE CENTERLINE INTERSECTION OF MAPLE STREET AND MAGNOLIA BLVD. AS  
PER CITY BURBANK FB 319-179 AND PWFB 1718-670,671

A description of the physical condition of the monument as found and as set or reset: \_\_\_\_\_

SEE PAGE 2

### SURVEYOR'S STATEMENT

This Corner Record was prepared by me or under my direction in conformance

with the Land Surveyors' Act on DECEMBER 23 2014

Signed [Signature] P.L.S. or R.C.E. No. 5148



### COUNTY SURVEYOR'S STATEMENT

This Corner Record was received \_\_\_\_\_

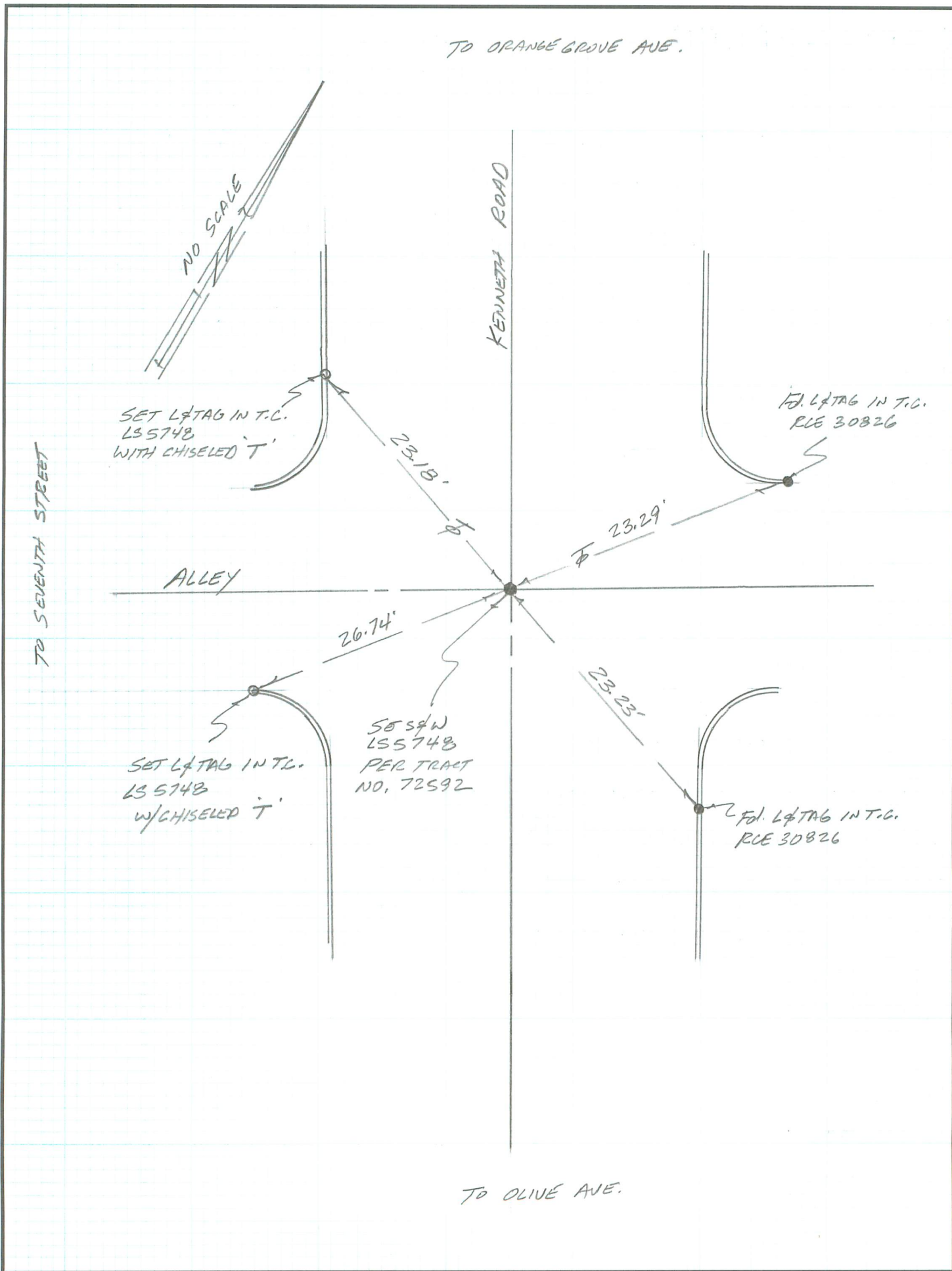
and examined and filed \_\_\_\_\_

Signed \_\_\_\_\_ P.L.S. or R.C.E. No. \_\_\_\_\_

Title: \_\_\_\_\_

County Surveyor's Comment \_\_\_\_\_





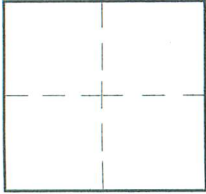
# CORNER RECORD

Document Number \_\_\_\_\_

City of BURBANK

County of Los Angeles, California

Brief Legal Description CENTRELINE INTERSECTION OF KENNETH ROAD AND ALLEY BETWEEN OLIVE AVENUE AND ORANGE GROVE AVENUE



### CORNER TYPE

Govt. Corner  Control   
 Meander  Property   
 Rancho  Other   
 Date of Survey DEC. 16 2014

### COORDINATES (Optional)

N. \_\_\_\_\_  
 E. \_\_\_\_\_  
 Zone \_\_\_\_\_ NAD27  NAD83   
 NAD83 Epoch \_\_\_\_\_  
 Elev. \_\_\_\_\_  
 Vert. Datum: NGVD29  NAVD88   
 Meas. Units: Metric  Imperial

Corner - Left as found  Found & tagged  Established  Reestablished  Rebuilt

Identification and type of corner found: Evidence used to identify or procedure used to establish or reestablish the corner:

THE PURPOSE OF THIS CORNER RECORD IS TO SATISFY THE REQUIREMENTS FOR THE FILING OF P.M. NO. 72592.

A description of the physical condition of the monument as found and as set or reset: \_\_\_\_\_

SEE PAGE 2

### SURVEYOR'S STATEMENT

This Corner Record was prepared by me or under my direction in conformance

with the Land Surveyors' Act on DECEMBER 23 2014

Signed [Signature] P.L.S. or R.C.E. No. 5748



### COUNTY SURVEYOR'S STATEMENT

This Corner Record was received \_\_\_\_\_

and examined and filed \_\_\_\_\_

Signed \_\_\_\_\_ P.L.S. or R.C.E. No. \_\_\_\_\_

Title: \_\_\_\_\_

County Surveyor's Comment \_\_\_\_\_





Page 4  
of  
4 Pages

**SURVEY PLAT**

**OCT. 2007**

Fd. lead & rivet per C.E.F.B. 236 Pg. 294.

S 58°22'18" E 57.39'

Fd. spike & washer, 2 inches below surface, per C.E.F.B. 236 Pg. 294.

Fd. lead & C.E. tag per C.E.F.B. 236 Pg. 294.

N 22°43'26" E 58.06'

1350.71'

172.51'

C/L

TO  
TRANSIT LINE  
CHANDLER BLVD  
N 23°02'24" W

**KENWOOD STREET**

Set lead & tag stamped L.S. 7048 on lot line prolongation, 1.00 foot off corner

828.17'

50.01'

107.51'

172.51'

30.00'  
N 66°58'39" E

1.00'

30.00'

N 66°58'40" E

50

54.89'

N 58°21'43" W

820.665'

50.005'

100.01'

125.01'

Fd. lead & C.E. tag per C.E.F.B. 236 Pg. 294.

S 22°42'25" W 54.18'

See Page 2

135.01'

10.00'

51.00'

135.01'

Set lead & tag stamped L.S. 7048, on conc. slab, 5.00 feet off lot line.

Set lead & tag stamped L.S. 7048, in face of conc. step, 10.00 feet off lot line.

N 66°58'39" E

75.49'

LOT 101

84.01'

N 66°58'40" E

100.01'

7.5  
7.5

TRACT

NO. 7383

MAP BOOK

84 - 20 - 21

Centerline of alley established by proportion along the westerly sideline of Kenwood St. and the easterly sideline of Maple St., nothing found or set.

Found lead & rivet per C.E.F.B. 236 Page 292.

S 55°19'52" E 55.54'

125.01'

820.655'

N 23°02'18" W

50.005'

970.67'

Set 1 inch pipe with tag stamped L.S. 7048, flush with surface, 5.00 feet off each lot line.

SCALE:

1 Inch = 60 feet

ALLEY

270.02'

135.01'

N 66°58'42" E

270.03'

40

BASIS OF BEARINGS  
N 66°58'45" E

MAGNOLIA AVENUE

Match Line



970.66'

985.65'

N 23°02'12" W  
TO TRANSIT LINE  
CHANDLER BLVD

**MAPLE STREET**

1350.67'

30

N 8°52'21" E  
54.535'

172.51'

C/L

Fd. lead & C.E. tag per C.E.F.B. 236 Pg. 292.

Fd. mag nail & washer stamped L.S. 4016, on surface, per C.E.F.B. 236 Pg. 292.

S 8°52'09" W 58.06'

**LEGEND**

- SET OR ESTABLISHED MONUMENT AS NOTED.
- FOUND MONUMENT AS NOTED.

THOMAS GUIDE: 563-C-2  
A.P.N. - 2476 024 015

PWFB 1718

812

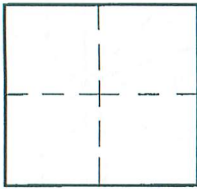
CORNER RECORD

Document Number

City of BURBANK

County of Los Angeles, California

Brief Legal Description LOT 101, TRACT NO. 7383, M.B. 84 - 20 - 21



CORNERTYPE

Govt. Corner [ ] Control [ ]
Meander [ ] Property [X]
Rancho [ ] Other [ ]
Date of Survey 10-19-07

COORDINATES (Optional)

N.
E.
Zone NAD27 [ ] NAD83 [ ]
NAD83 Epoch
Elev.
Vert. Datum: NGVD29 [ ] NAVD88 [ ]
Meas. Units: Metric [ ] Imperial [ ]

Corner - Left as found [ ] Found & tagged [ ] Established [ ] Reestablished [X] Rebuilt [ ]

Identification and type of corner found: Evidence used to identify or procedure used to establish or reestablish the corner:

SEE DRAWING

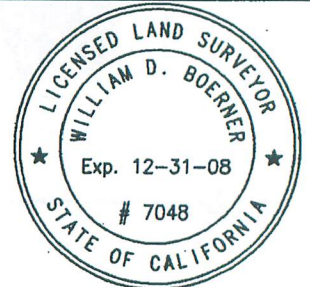
A description of the physical condition of the monument as found and as set or reset:

SEE DRAWING

SURVEYOR'S STATEMENT

This Corner Record was prepared by me or under my direction in conformance with the Land Surveyors' Act on OCTOBER 23, 2007

Signed William Boerner P.L.S. or R.C.E. No. L.S. 7048



COUNTY SURVEYOR'S STATEMENT

This Corner Record was received OCT 30 2007

and examined and filed NOV 29 2007

Signed Kurt M. O'Bryan P.L.S. or R.C.E. No. 6388

Title: DEPUTY COUNTY SURVEYOR



County Surveyor's Comment

**SURVEY  
PLAT  
OCT. 2007**

**KENWOOD  
STREET**

TO: C/L  
MAGNOLIA  
BLVD.  
1350.71'  
828.17'

Fd. lead & tag stamped R.C.E. 9840  
per map of Tr. No. 35900, M.B. 986  
- 21 - 22. Accepted for the  
northeast corner of Lot 172, Tr. No.  
7383, M.B. 84 - 20 - 21. Held to  
establish City Engineer's transit line  
of Chandler Blvd. per said map.

N 66°58'20" E 240.07'  
240.09' PER TR. 35900,  
M.B. 986 - 21 - 22

Set lead & tag stmpd. L.S. 7048

N 58°42'14" W 72.13'

Fd. lead & cuptack  
per C.E.F.B. 231 Pg. 48.

Intersection of the centerline  
of Kenwood Street to south with  
the City Engineer's Transit line of  
Chandler Blvd. established easterly  
along said transit line a distance of  
570.05 ft., from Pass Ave. to north,  
per C.E.F.B. 231 Pages 46, 47 & 48.

S 33°58'18" W 36.44'  
Found lead & tack,  
no reference, typical



**SCALE:  
1 inch  
=  
60 feet**

City Engineer's 60.00 foot offset  
line from the southerly sideline of  
Chandler Blvd. per C.E.F.B. 231  
Pages 46, 47 & 48.

Found lead & tack,  
no reference, typical

S 79°46'09" E 36.13'

N 7°23'04" W 60.88'  
Set lead & tag  
stamped L.S. 7048

Intersection of the C/L  
of Maple Street to south  
with the City Engineer's  
Transit line of Chandler Blvd.  
established easterly along said  
transit line a distance of 240.10  
ft. from Pass Ave. to north, per  
C.E.F.B. 231 Pg.s 46 & 47

N 60°17'14" W 73.61'

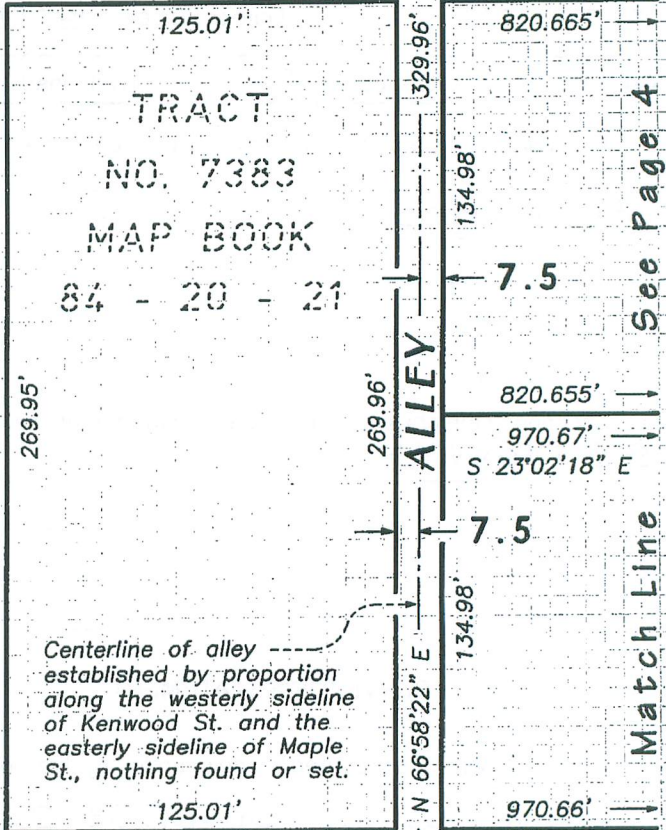
Fd. lead & cuptack per  
C.E.F.B. 231 Pg.s 46 & 47.

N 25°23'57" E 88.39'

**PASS AVENUE**

N 59°56'59" W 73.25'

Fd. lead & tag stamped  
L.S. 4016, no reference.



**MAPLE STREET**

Fd. lead & tag stamped L.S. 4016, no reference.  
Fits position established from 3 tie points shown in  
C.E.F.B. 231 Page 46. Accepted for the intersection  
of the centerline of Pass Avenue to north with the  
City Engineer's Transit line of Chandler Blvd.

S 59°57'36" E 62.85'

Found lead & cuptack per C.E.F.B. 231 Page 46.

**CHANDLER BLVD**

THOMAS GUIDE: 563-C-2  
A.P.N. - 2476 024 015

PWFB 1718

810

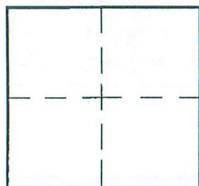
# CORNER RECORD

Document Number \_\_\_\_\_

City of BURBANK

County of Los Angeles, California

Brief Legal Description LOT 101, TRACT NO. 7383, M.B. 84 - 20 - 21



### CORNERTYPE

Govt. Corner  Control   
 Meander  Property   
 Rancho  Other   
 Date of Survey 10-19-07

### COORDINATES (Optional)

N. \_\_\_\_\_  
 E. \_\_\_\_\_  
 Zone \_\_\_\_\_ NAD27  NAD83   
 NAD83 Epoch \_\_\_\_\_  
 Elev. \_\_\_\_\_  
 Vert. Datum: NGVD29  NAVD88   
 Meas. Units: Metric  Imperial

Corner - Left as found  Found & tagged  Established  Reestablished  Rebuilt

Identification and type of corner found: Evidence used to identify or procedure used to establish or reestablish the corner:

SEE DRAWING

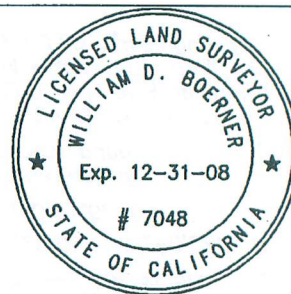
A description of the physical condition of the monument as found and as set or reset:

SEE DRAWING

### SURVEYOR'S STATEMENT

This Corner Record was prepared by me or under my direction in conformance  
 with the Land Surveyors' Act on OCTOBER 23, 2007

Signed William Boerner P.L.S. or R.C.E. No. L.S. 7048



### COUNTY SURVEYOR'S STATEMENT

This Corner Record was received OCT 30 2007  
 and examined and filed NOV 29 2007

Signed Curt M. O'Bryan P.L.S. or R.C.E. No. 6388

Title: DEPUTY COUNTY SURVEYOR



County Surveyor's Comment \_\_\_\_\_