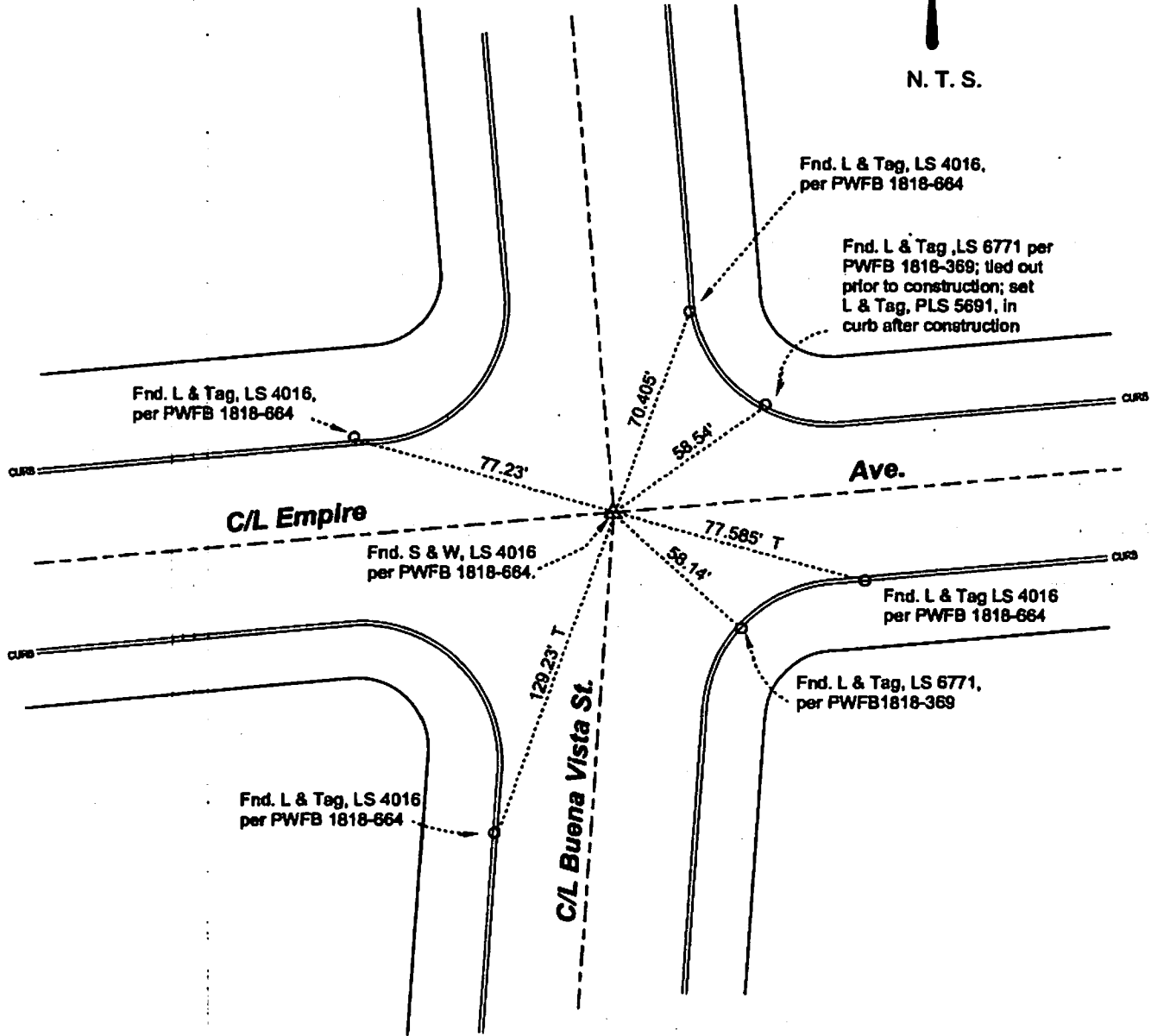




N. T. S.



Distances measured horizontal

Reference: PWFB 1818-664

Date: October 15, 2013  
Surveyed by J P Ostly  
P. L. S. 5691

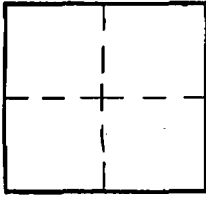
PWFB 1818

CORNER RECORD

City of Burbank

Document Number 764
County of Los Angeles, California

Brief Legal Description Monument preservation - tie set after construction EMPIRE @ BUENA VISTA



CORNER TYPE

Govt. Corner [ ] Control [x]
Meander [ ] Property [ ]
Rancho [ ] Other [ ]
Date of Survey October 2013

COORDINATES (Optional)

N.
E.
Zone NAD27 [ ] NAD83 [ ]
NAD83 Epoch
Elev.
Vert. Datum: NGVD29 [ ] NAVD88 [ ]
Meas. Units: Metric [ ] Imperial [ ]

Corner - Left as found [ ] Found & tagged [ ] Established [ ] Reestablished [x] Rebuilt [ ]

Identification and type of corner found: Evidence used to identify or procedure used to establish or reestablish the corner: see plat;

distances measured horizontal;

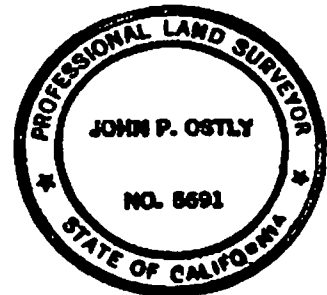
A description of the physical condition of the monument as found and as set or reset: see plat;

T.G.: 533 D-6

SURVEYOR'S STATEMENT

This Corner Record was prepared by me or under my direction in conformance with the Land Surveyors' Act on 22-Oct-13

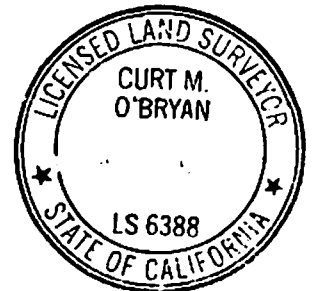
Signed [Signature] P.L.S. or R.C.E. No. 5691



COUNTY SURVEYOR'S STATEMENT

This Corner Record was received OCT 31 2013 and examined and filed DEC 04 2013

Signed [Signature] P.L.S. or R.C.E. No. 6388
Title: DEPUTY COUNTY SURVEYOR



County Surveyor's Comment