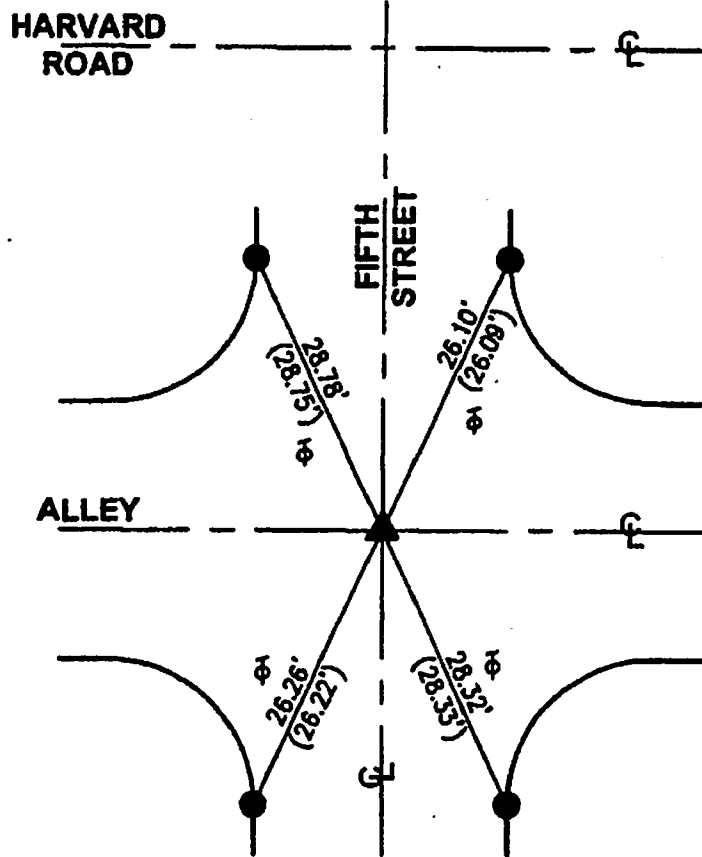
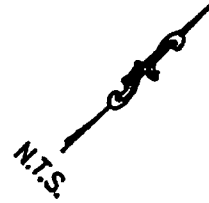


R-1 = CITY OF BURBANK TIE SHEET BOOK 337, PAGE 109  
( ) = RECORD DISTANCE PER R-1  
⊕ = TANGENT OVER



▲ FD. PUNCHED DOME SPK/W "LS 5748" FLUSH PER R-1 BEFORE CONSTRUCTION. SET MAG. N/W "LS 5411" FLUSH PER TIES HEREON AFTER CONSTRUCTION.

● FD. L/T "LS 5748" & CHISELED "T" IN T.C. PER R-1.

THE PURPOSE OF THIS RECORD IS TO DOCUMENT THE PERPETUATION OF FOUND MONUMENT(S) PURSUANT TO THE PLS ACT SECTION 8771. NO CLAIM IS MADE REGARDING THE CORRECTNESS OF THE POSITION(S) OF SAID MONUMENT(S), NOR THE DIMENSIONAL RELATIONSHIP TO STREET CENTERLINES OR PROPERTY BOUNDARIES.

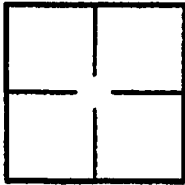
13-TRO-276

# CORNER RECORD

Document Number **PWFB 1819** **889**

City of BURBANK County of LOS ANGELES, California

Brief Legal Description FIFTH STREET & ALLEY; SE'LY OF HARVARD ROAD



### CORNER TYPE

- Government Corner  Control
- Meander  Property
- Rancho  Other

Date of Survey 4/8/2013 & 5/16/2013

### COORDINATES (Optional)

N. \_\_\_\_\_  
 E. \_\_\_\_\_  
 Zone \_\_\_\_\_ NAD27  NAD83   
 NAD83 Epoch \_\_\_\_\_  
 Elevation \_\_\_\_\_  
 Vertical Datum: NGVD29  NAVD86   
 Units: Metric  Imperial  U.S. Survey

Corner — Left as found  Found and tagged  Established  Reestablished  Rebuilt

Identification and type of corner found; Evidence used to identify or procedure used to establish or reestablish corner:  
Found as described on the reverse of this sheet.

A description of the physical condition of the monument as found and as set or reset: \_\_\_\_\_  
See Page 2

### SURVEYOR'S STATEMENT

This Corner Record was prepared by me or under my direction in conformance with the Professional Land Surveyors' Act on 5/21/2013

Signed [Signature] P.L.S. or R.C.E. No. LS. 5411



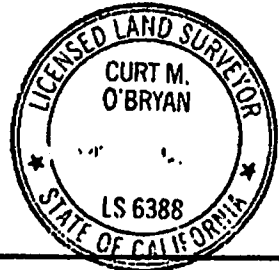
### COUNTY SURVEYOR'S STATEMENT

This Corner Record was received JUN 04 2013

examined and filed JUN 25 2013

Signed [Signature] P.L.S. or R.C.E. No. 6388

Title DEPUTY COUNTY SURVEYOR



County Surveyor's Comment \_\_\_\_\_