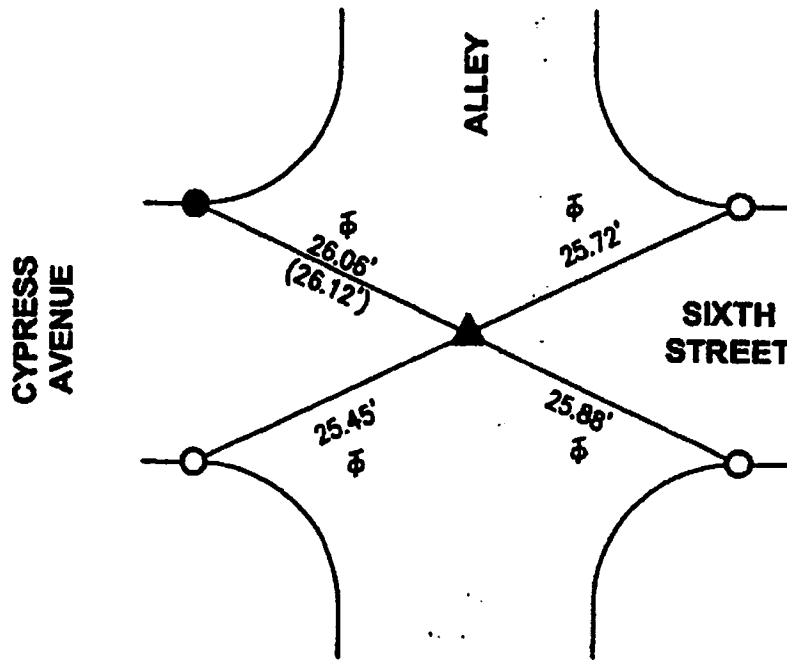
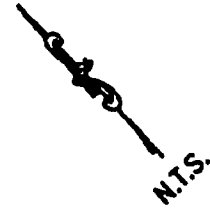


R-1 = CITY OF BURBANK TIE SHEET BOOK 331, PAGE 87
() = RECORD DISTANCE PER R-1
⊕ = TANGENT OVER

FB 338 P.331

**UNABLE TO VERIFY
CENTERLINE POSITION**



▲ FD. PUNCHED FLAT HD. SQ. SPK/W "RCE" ILLEGIBLE NO. FLUSH NO REF., UNABLE TO VERIFY CENTERLINE POSITION BEFORE CONSTRUCTION. SET MAG. N/W "LS 5411" FLUSH PER TIES HEREON AFTER CONSTRUCTION.

● FD L/T IN T.C. PER R-1.

○ SET L/T "LS 5411" & CHISELED "T" IN T.C.

THE PURPOSE OF THIS RECORD IS TO DOCUMENT THE PERPETUATION OF FOUND MONUMENT(S) PURSUANT TO THE PLS ACT SECTION 8771. NO CLAIM IS MADE REGARDING THE CORRECTNESS OF THE POSITION(S) OF SAID MONUMENT(S), NOR THE DIMENSIONAL RELATIONSHIP TO STREET CENTERLINES OR PROPERTY BOUNDARIES.

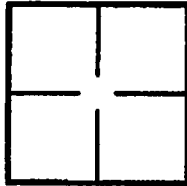
13-TR0-278

CORNER RECORD

Document Number **PWFB 1819 . 945**

City of BURBANK County of LOS ANGELES, California

Brief Legal Description SIXTH STREET & ALLEY; SE'LY OF CYPRESS AVENUE



CORNER TYPE

Government Corner Control
Meander Property
Rancho Other
Date of Survey 4/8/2013 & 5/16/2013

COORDINATES (Optional)

N. _____
E. _____
Zone NAD27 NAD83
NAD83 Epoch _____
Elevation _____
Vertical Datum: NGVD29 NAVD88
Units: Metric Imperial U.S. Survey

Corner — Left as found Found and tagged Established Reestablished Rebuilt

Identification and type of corner found; Evidence used to identify or procedure used to establish or reestablish corner:
Found as described on the reverse of this sheet.

A description of the physical condition of the monument as found and as set or reset:
See Page 2

SURVEYOR'S STATEMENT

This Corner Record was prepared by me or under my direction in conformance with the Professional Land Surveyors' Act on 5/21/2013

Signed [Signature] P.L.S. or R.C.E. No. LS. 5411



COUNTY SURVEYOR'S STATEMENT

This Corner Record was received JUN 04 2013 JUL 08 2013
examined and filed JUL 10 2013

Signed [Signature] P.L.S. or R.C.E. No. 6388

Title DEPUTY COUNTY SURVEYOR



County Surveyor's Comment _____