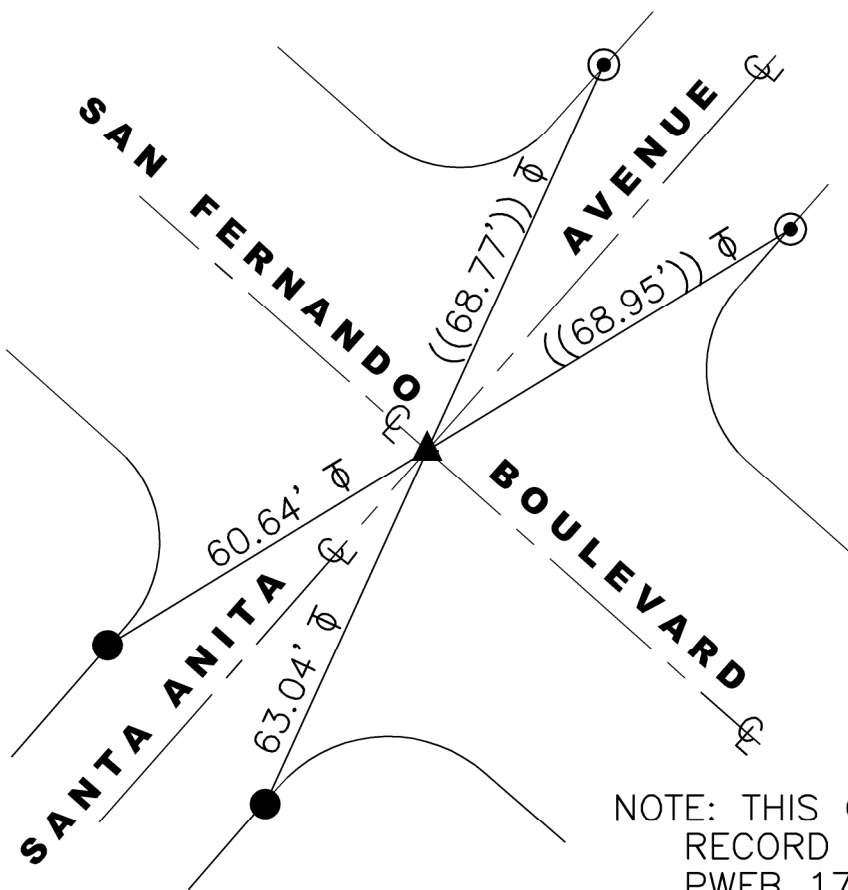


- ⊕ = CENTER LINE
- ⊘ = TANGENT OVER
- R-1 = P.W.F.B. 1719 PGS. 798-799
- (()) = REC. & MEAS. DISTANCE PER R-1



NOTE: THIS CORNER
 RECORD SUPERCEDES
 PWFB 1719 PGS. 798, 799

- ▲ FD SPK/W LS 5411 (PER R-1) PRIOR TO CONSTRUCTION
 SET SPK/W LS 7740 AFTER CONSTRUCTION
- SET L/T LS 7740 IN T.C.
- ⊙ FD L/T LS 5411 IN T.C. (PER R-1)

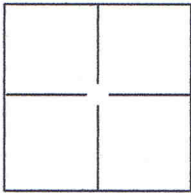
CORNER RECORD

Document Number _____

City of Burbank

County of Los Angeles, California

Brief Legal Description San Fernando Blvd. & Santa Anita Avenue



CORNER TYPE

Government Corner Control
 Meander Property
 Rancho Other

Date of Survey August 20, 2015

COORDINATES(Optional)

N. _____
 E. _____
 Zone _____ NAD27 NAD83
 NAD83 Epoch _____
 Elev. _____
 Vert. Datum: NGVD29 NADV88
 Meas. Units: Metric Imperial

Corner - Left as found Found and tagged Established Reestablished Rebuilt

Identification and type of corner found: Evidence used to identify or procedure used to establish or reestablish the corner:

See Page 2

A description of the physical condition of the monument as found and as set or reset: _____

See Page 2

SURVEYOR'S STATEMENT

This Corner Record was prepared by me or under my direction in conformance with
 the Land Surveyor's Act on 9-21-15

Signed Raymundo A. Lombera P.L.S. or R.C.E. No.: 7740



COUNTY SURVEYOR'S STATEMENT

This Corner Record was received _____ and examined
 and filed _____

Signed _____ P.L.S. or R.C.E. No.: _____

Title _____

County Surveyor's Comment _____