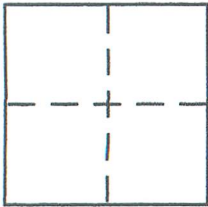


# CORNER RECORD

Document Number \_\_\_\_\_

City of BURBANK County of Los Angeles, California

Brief Legal Description CENTERLINE TIES: VERDUGO AVENUE & LINCOLN STREET



### CORNER TYPE

Government Corner  Control   
 Meander  Property   
 Rancho  Other   
 Date of Survey 10-9-00

### COORDINATES (Optional)

N. \_\_\_\_\_  
 E. \_\_\_\_\_  
 Zone \_\_\_\_\_ NAD27  NAD83   
 NAD83 Epoch \_\_\_\_\_  
 Elev. \_\_\_\_\_  
 Vert. Datum: NGVD29  NAVD88   
 Meas. Units: Metric  Imperial

Corner - Left as found  Found and tagged  Established  Reestablished  Rebuilt

Identification and type of corner found: Evidence used to identify or procedure used to establish or reestablish the corner:

TIED OUT AS FOUND

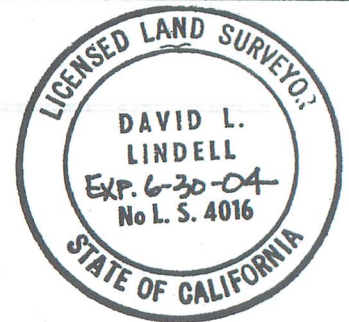
A description of the physical condition of the monument as found and as set or reset: \_\_\_\_\_

SEE PLAT

### SURVEYOR'S STATEMENT

This Corner Record was prepared by me or under my direction in conformance with the Land Surveyor's Act on NOVEMBER 21, 2000

Signed David L. Lindell P.L.S or R.C.E. No. LS 4016 (EXPIRES 6-30-04)



### COUNTY SURVEYOR'S STATEMENT

This Corner Record was received \_\_\_\_\_

and examined and filed \_\_\_\_\_

Signed \_\_\_\_\_ P.L.S or R.C.E. No. \_\_\_\_\_

Title \_\_\_\_\_

County Surveyor's Comment \_\_\_\_\_