

FD. L & RIVET PER
PWFB 1618-159,160
(C.E.F.B. 336-21)

FD. L & RIVET PER
PWFB 1618-159,160
(C.E.F.B. 336-21)

HOOD

AVENUE

FD. C.E. S&W PER
PWFB 1618-159,160
(C.E.F.B. 336-21)

FD. L & RIVET PER
PWFB 1618-159,160
(C.E.F.B. 336-21)

SET L & TAG
LS 4016

STREET

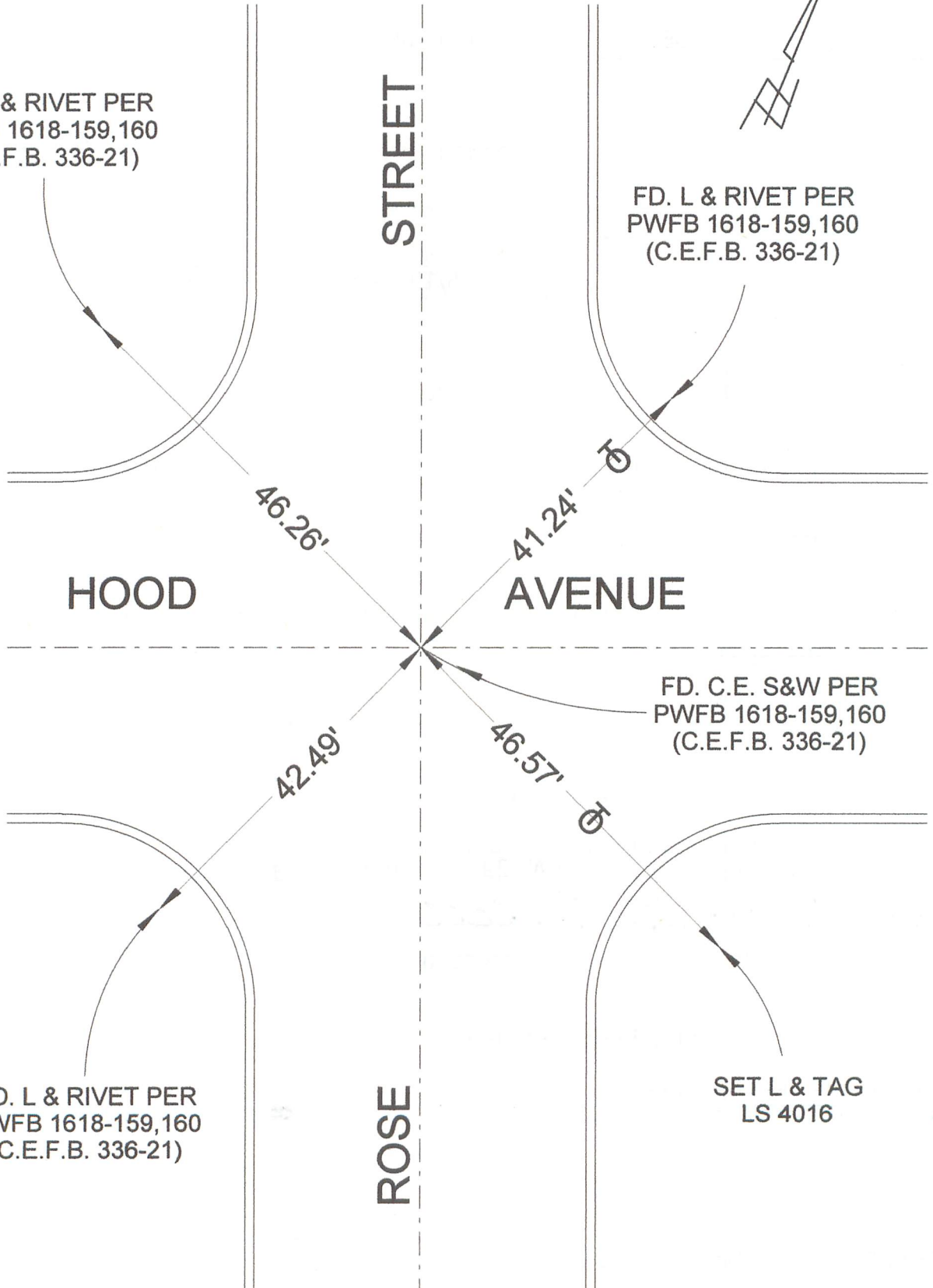
ROSE

46.26'

41.24'

42.49'

46.57'



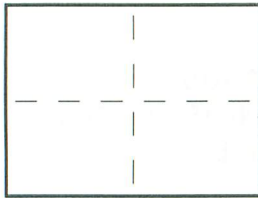
CORNER RECORD

INDEX _____ PAGE _____

City of BURBANK

County of Los Angeles, California

Brief Legal Description: ROSE STREET & HOOD AVENUE



CORNER TYPE

COORDINATES (optional)

- Govt. Corner
- Meander
- Rancho
- Date of Survey: 5/19/15
- Control
- Property
- Other

N. _____
 E. _____
 Zone _____ Datum _____
 Elev. _____

- Corner —
- Left as Found
 - Reestablished
 - Found & Tagged
 - Rebuilt
 - Established

Identification & Type of Corner Found: Evidence used to identify or procedure used to establish or reestablish the corner.

SEE PLAT

A Description of the Physical Condition of the Monument as Found and as Set or Reset: _____

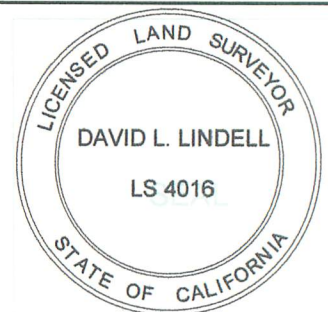
SEE PLAT

Surveyor's Statement

This Corner Record was Prepared by Me or Under My Direction in Conformance with the Land Surveyors Act on MAY 29, 2015

Signed: David L. Lindell

L.S. or R.C.E. No.: LS 4016



County Surveyor's Statement

This Corner Record was Received _____ and Examined and Filed _____

Signed: _____

Title: _____

County Surveyor's Comment: _____

T.G. 563-D-5