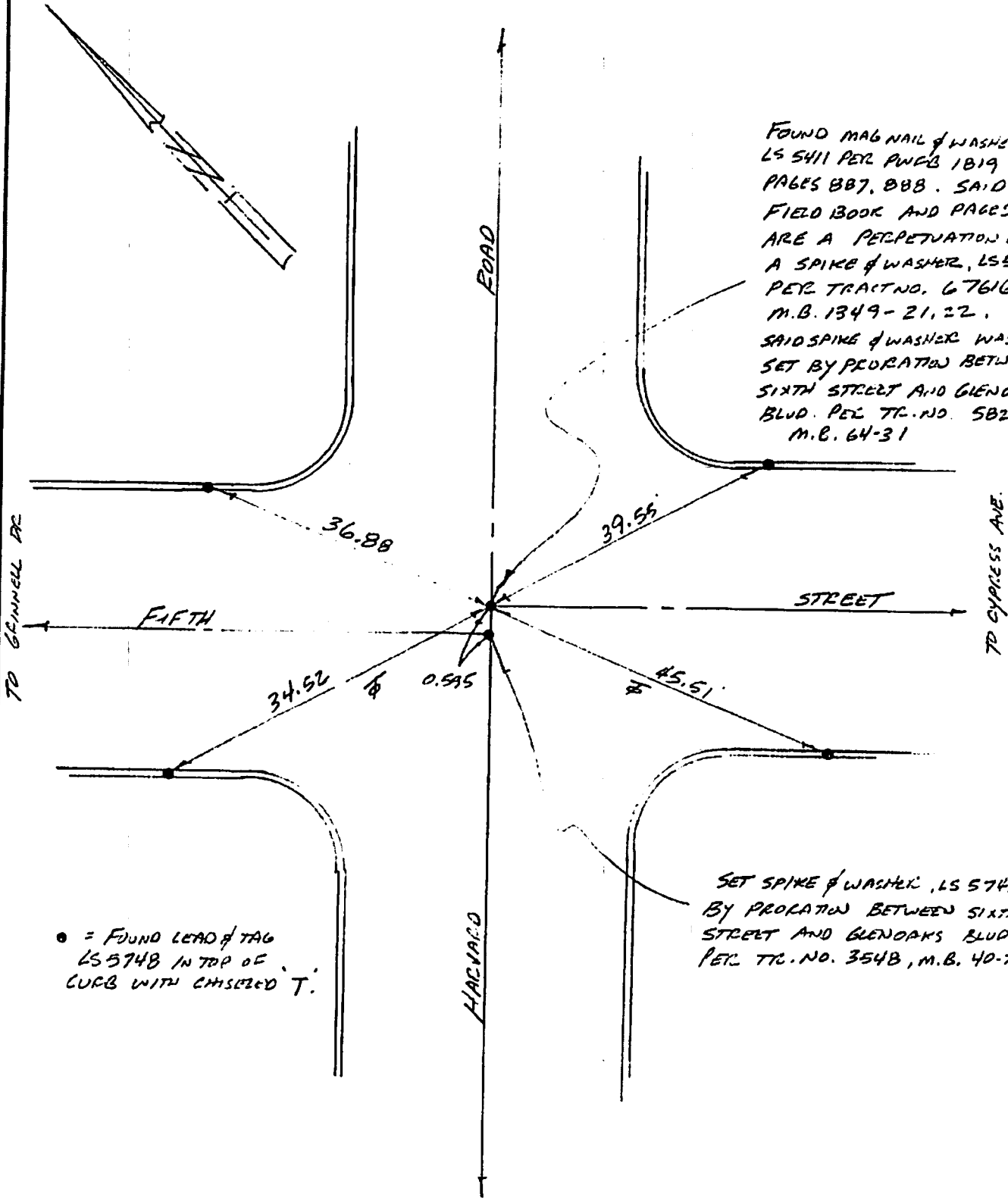


TO SIXTH ST.

FOUND MAG NAIL & WASHER, LS 5411 PER PWCB 1819 PAGES 887, 888. SAID FIELD BOOK AND PAGES ARE A PERPETUATION OF A SPIKE & WASHER, LS 5748 PER TRACT NO. 67616 M.B. 1349-21, 22. SAID SPIKE & WASHER WAS SET BY PROLATION BETWEEN SIXTH STREET AND GLENDAKS BLVD. PER TR. NO. 5829 M.B. 64-31



● = FOUND LEAD & TAG LS 5748 IN TOP OF CURB WITH ENGRAVED T.

SET SPIKE & WASHER, LS 5748 BY PROLATION BETWEEN SIXTH STREET AND GLENDAKS BLVD. PER TR. NO. 3548, M.B. 40-75.

TO GLENDAKS BLVD.

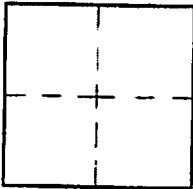
CORNER RECORD

City of BURBANK

Document Number _____

County of Los Angeles, California

Brief Legal Description CENTERLINE INTERSECTION OF GRINNELL DRIVE AND FIFTH STREET



CORNER TYPE

Govt. Corner Control

Meander Property

Rancho Other

Date of Survey 9/18/13

COORDINATES (Optional)

N. _____

E. _____

Zone _____ NAD27 NAD83

NAD83 Epoch _____

Elev. _____

Vert. Datum: NGVD29 NAVD88

Meas. Units: Metric Imperial

Corner - Left as found Found & tagged Established Reestablished Rebuilt

Identification and type of corner found: Evidence used to identify or procedure used to establish or reestablish the corner:

CENTERLINE INTERSECTION OF GRINNELL DRIVE AND FIFTH STREET WAS
ESTABLISHED BY PROBATION BETWEEN GLENOAKS BLVD AND SIXTH STREET
PER TRACT NO. 354B M.B. 40-75

SEE MAP OF TRACT NO. 68080

A description of the physical condition of the monument as found and as set or reset:

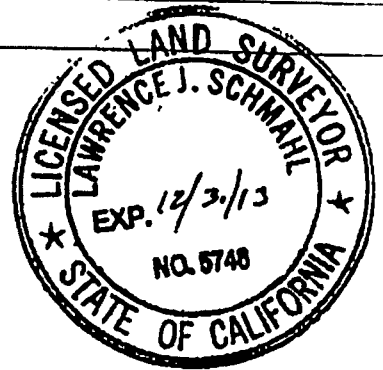
SET SPIKE AND WASHER STAMPED L.S. 5748

SURVEYOR'S STATEMENT

This Corner Record was prepared by me or under my direction in conformance

with the Land Surveyors' Act on SEPT 20 2013

Signed [Signature] P.L.S. or R.C.E. No. 5748



COUNTY SURVEYOR'S STATEMENT

This Corner Record was received _____

and examined and filed _____

Signed _____ P.L.S. or R.C.E. No. _____

Title: _____

County Surveyor's Comment _____

