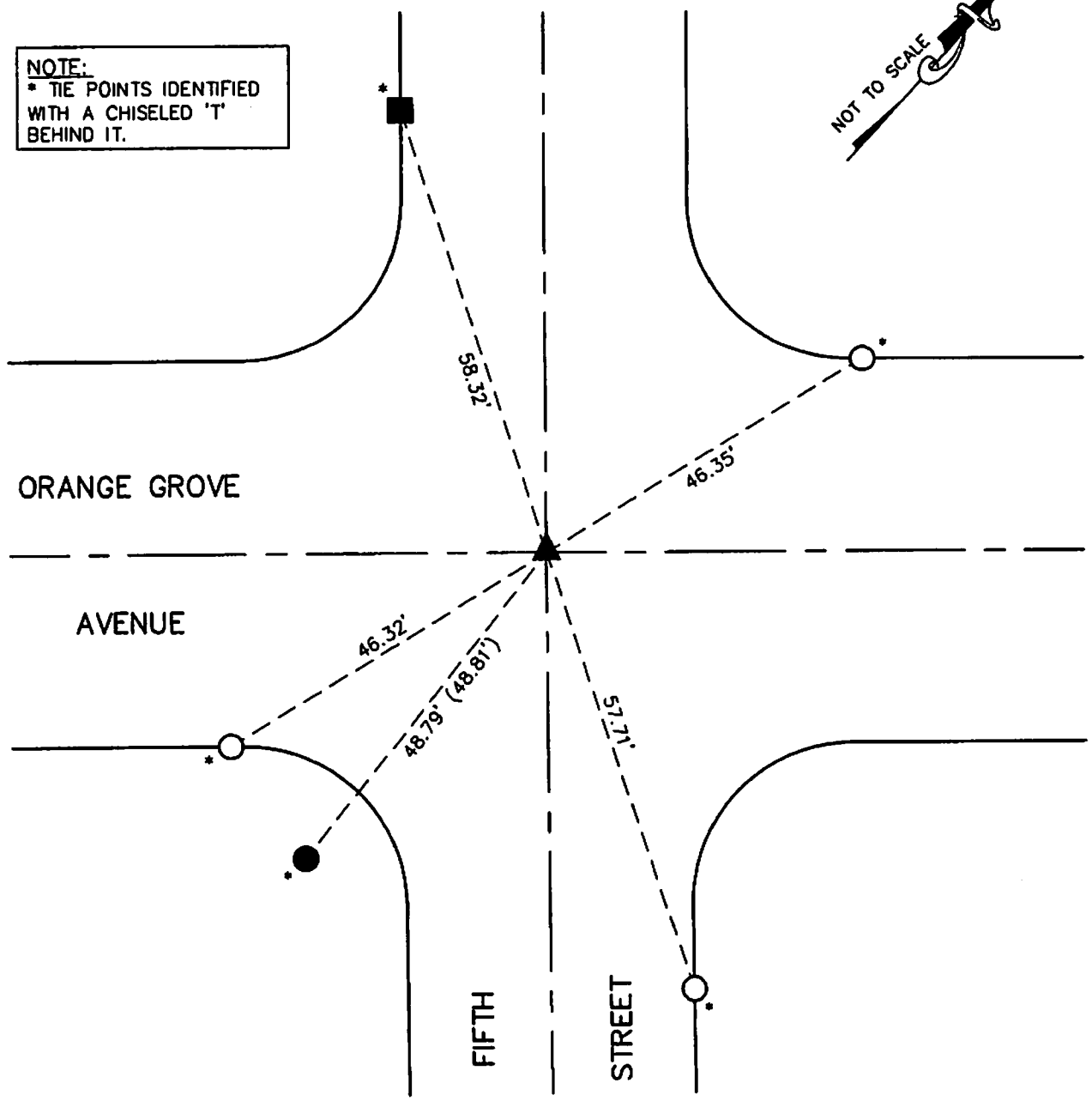
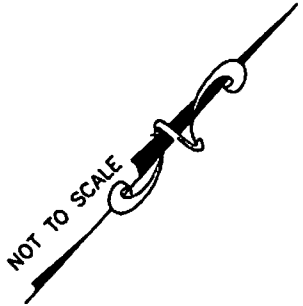


FB 338 P. 441

LEGEND

- R1 = PWFB 1819/329-330
- ▲ FD SPIKE & WASHER, 'CITY ENGR', PER R1, PRIOR TO CONSTRUCTION. DESTROYED DUE TO CONSTRUCTION. SET SPIKE & WASHER 'RCE 27743' FLUSH AFTER CONSTRUCTION.
- FD LEAD, TACK & TAG 'LS 5850' IN SDWK, PER R1
- FD LEAD & TACK, NO REF
- SET LEAD, TACK & TAG 'RCE 27743' IN TC
- () RECORD DIST. PER R1

NOTE:
 * TIE POINTS IDENTIFIED WITH A CHISELED 'T' BEHIND IT.

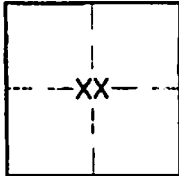


CORNER RECORD

PWFB 1719

1228

Document Number _____

City of BURBANK County of LOS ANGELES, CaliforniaBrief Legal Description ORANGE GROVE AVENUE AND FIFTH STREET**CORNER TYPE**

Government corner Control
 Meander Property
 Rancho Other
 Date of Survey 12/18/13

COORDINATES (OPTIONAL)

N. _____
 E. _____
 Zone _____ NAD27 NAD83
 NAD83 Epoch _____
 Elev. _____
 Vert. Datum: NCV029 NAVD88
 Meas. Units: Metric Imperial

Corner - Left as found Found and tagged Established Reestablished Rebuilt

Identification and type of corner found: Evidence used to identify or procedure used to establish or reestablish the corner:
FD MONUMENT, TIES, SET TIES AND TIED OUT PRIOR TO CONSTRUCTION. SET SPIKE AND WASHER AFTER CONSTRUCTION AS SHOWN ON SHEET 2 OF THIS RECORD.

A description of the physical condition of the monument as found and as set or reset: _____
SEE SHEET 2 OF THIS RECORD

SURVEYOR'S STATEMENT

This Corner Record was prepared by me or under my direction in conformance with the Land Surveyors' Act on 01/17/14

Signed _____ P.L.S. or R.C.E. Number 27743

COUNTY SURVEYOR'S STATEMENT

This Corner Record was received MAR 05 2014 APR 29 2014

and examined and filed MAY 14 2014

Signed [Signature] P.L.S. or R.C.E. Number 6508

Title DEPUTY COUNTY SURVEYOR

County Surveyor's Comment _____

