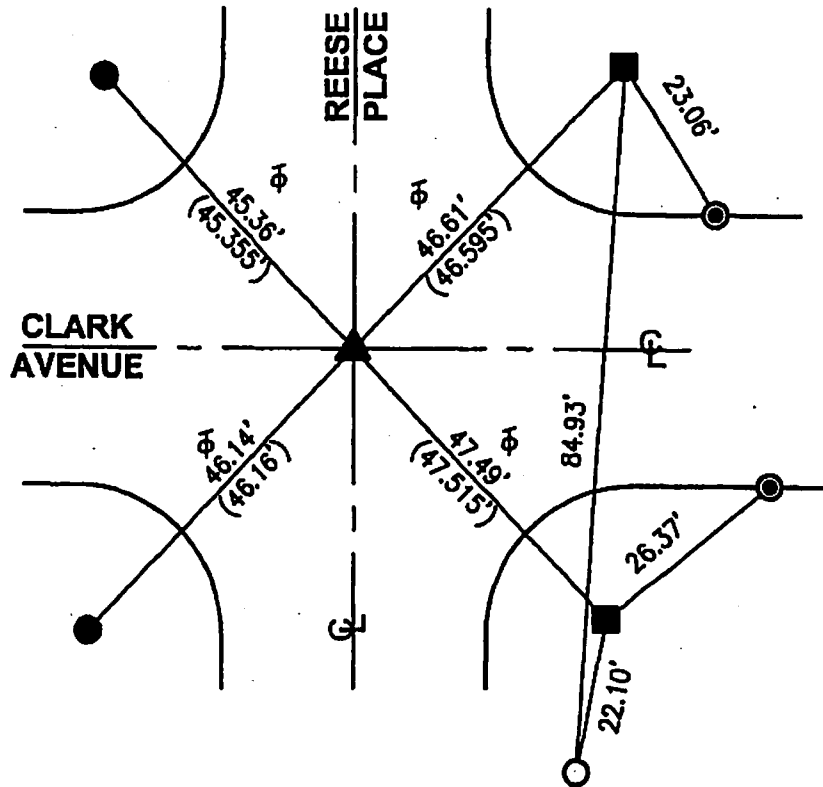


R-1 = CITY OF BURBANK TIE SHEET F.B. 336, PG 59
 () = RECORD DISTANCE PER R-1
 ϕ = TANGENT OVER

FB 338 P. 291



- ▲ FD PUNCHED DOME SPK/W "CITY ENG." DOWN 0.20' PER R-1 BEFORE AND AFTER CONSTRUCTION.
- FD L/T "CITY ENG." & CHISELED T FLUSH IN WALK PER R-1.
- FD L/T & CHISELED T FLUSH IN WALK NO REF. FITS POSITION PER R-1 BEFORE CONSTRUCTION. SET L/T "LS-5411" & CHISELED T FLUSH IN WALK PER TIES HEREON AFTER CONSTRUCTION.
- ◎ FD L/T IN T.C. NO REF.
- SET TEMP CHISELED X FLUSH IN WALK.

THE PURPOSE OF THIS RECORD IS TO DOCUMENT THE PERPETUATION OF FOUND MONUMENT(S) PURSUANT TO THE PLS ACT SECTION 8771. NO CLAIM IS MADE REGARDING THE CORRECTNESS OF THE POSITION(S) OF SAID MONUMENT(S), NOR THE DIMENSIONAL RELATIONSHIP TO STREET CENTERLINES OR PROPERTY BOUNDARIES.

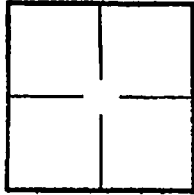
12-ALL-049

CORNER RECORD PWFB 1718

Document Number 1394

City of BURBANK County of LOS ANGELES, California

Brief Legal Description CLARK AVENUE & REESE PLACE



CORNER TYPE

Government Corner Control

Meander Property

Rancho Other

Date of Survey 7/02/2012

COORDINATES (Optional)

N. _____

E. _____

Zone NAD27 NAD83

NAD83 Epoch _____

Elevation _____

Vertical Datum: NGVD29 NAVD88

Units: Metric Imperial U.S. Survey

Corner — Left as found Found and tagged Established Reestablished Rebuilt

Identification and type of corner found; Evidence used to identify or procedure used to establish or reestablish corner:
Found as described on the reverse of this sheet.

A description of the physical condition of the monument as found and as set or reset:
See Page 2

SURVEYOR'S STATEMENT

This Corner Record was prepared by me or under my direction in conformance with the Professional Land Surveyors' Act on 9/17/2012

Signed [Signature] P.L.S. or R.C.E. No. LS. 5411



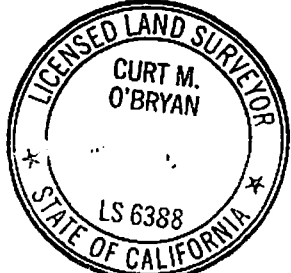
COUNTY SURVEYOR'S STATEMENT

This Corner Record was received SEP 19 2012

examined and filed OCT 09 2012

Signed [Signature] P.L.S. or R.C.E. No. 6388

Title DEPUTY COUNTY SURVEYOR



County Surveyor's Comment _____