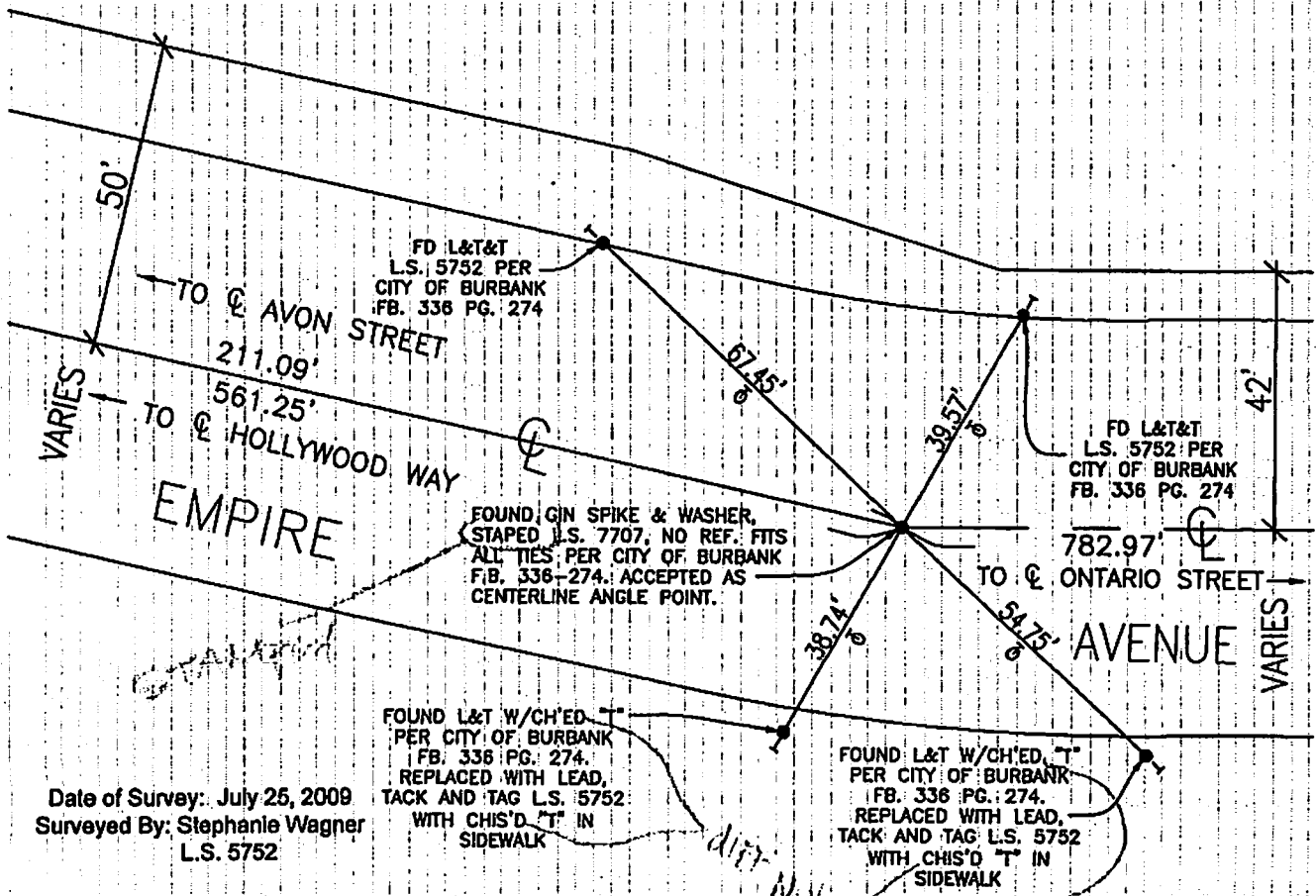


City of Burbank
Public Works Engineering



SCALE: 1" = 40'



FOUND L&T W/CH'ED,
PER CITY OF BURBANK
F.B. 338 PG. 274.
REPLACED WITH LEAD,
TACK AND TAG L.S. 5752
WITH CHIS'D "T" IN
SIDEWALK

FOUND L&T W/CH'ED,
PER CITY OF BURBANK
F.B. 338 PG. 274.
REPLACED WITH LEAD,
TACK AND TAG L.S. 5752
WITH CHIS'D "T" IN
SIDEWALK

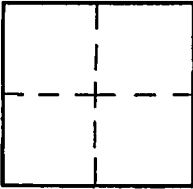
CORNER RECORD

Document Number _____

City of BURBANK

County of Los Angeles, California

Brief Legal Description CENTERLINE P.I. EMPIRE ST. BETWEEN HOLLYWOOD WAY & ONTARIO STREET



CORNERTYPE

Govt. Corner Control
 Meander Property
 Rancho Other
 Date of Survey _____

COORDINATES (Optional)

N. _____
 E. _____
 Zone _____ NAD27 NAD83
 NAD83 Epoch _____
 Elev. _____
 Vert. Datum: NGVD29 NAVD88
 Meas. Units: Metric Imperial

Corner - Left as found Found & tagged Established Reestablished Rebuilt

Identification and type of corner found: Evidence used to identify or procedure used to establish or reestablish the corner:

SEE PLAT.

A description of the physical condition of the monument as found and as set or reset: _____

SEE PLAT.

SURVEYOR'S STATEMENT

This Corner Record was prepared by me or under my direction in conformance

with the Land Surveyors' Act on NOVEMBER 2 2009

Signed Stephanie Wagner P.L.S. or R.C.E. No. 5752



COUNTY SURVEYOR'S STATEMENT

This Corner Record was received _____

and examined and filed _____

Signed _____ P.L.S. or R.C.E. No. _____

Title: _____

County Surveyor's Comment _____