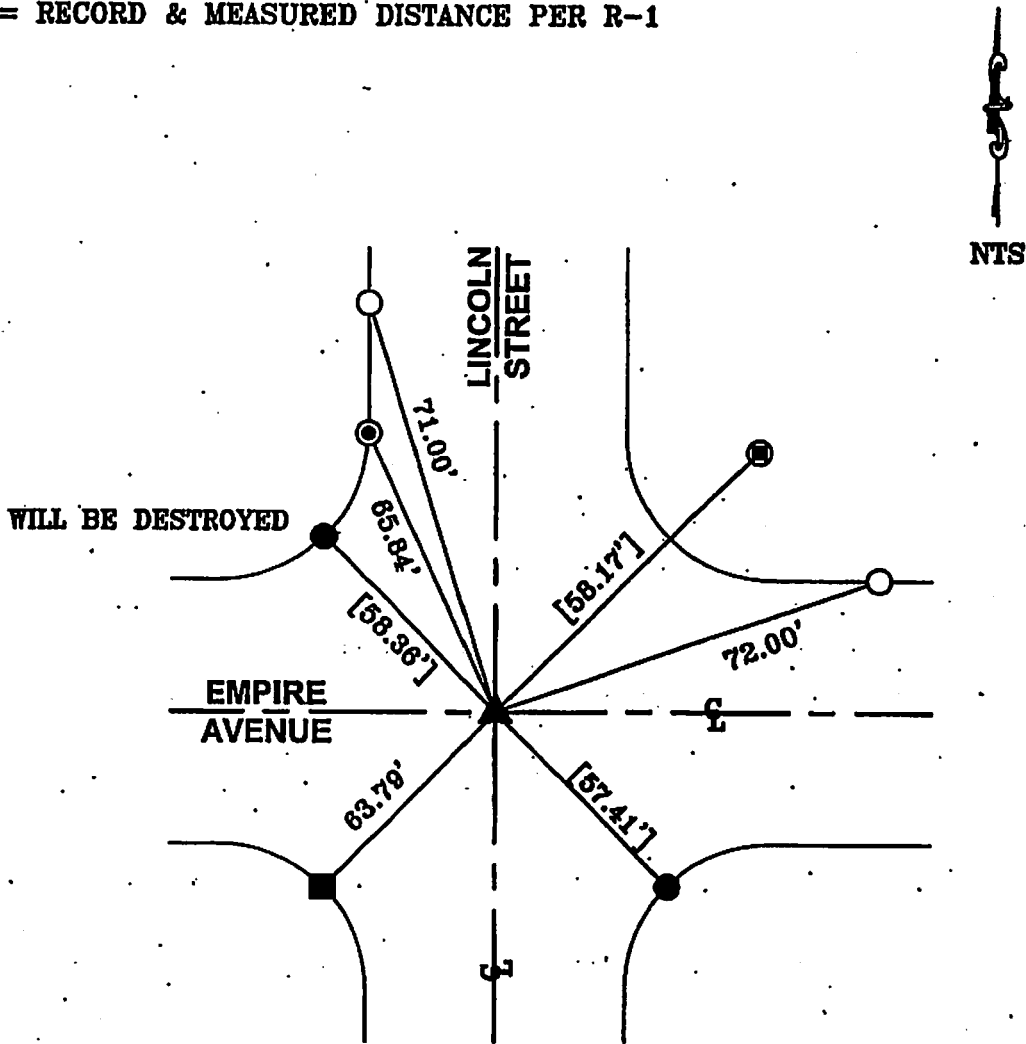


R-1 = COUNTY OF LOS ANGELES PWFB 1818/354-355
 [] = RECORD & MEASURED DISTANCE PER R-1



- ▲ FD NOTHING, SET GEAR SPK/W "LS 5411" FLUSH PER TIES ON R-1 BEFORE CONSTRUCTION. FD SAME AFTER CONSTRUCTION.
- FD L/T "LS 4002" W/ CHISELED "T" IN T.C. PER R-1.
- FD CHISELED X IN T.C. NO REF., SET L/T "LS 5411" TAG.
- ◎ FD N/T UNREADABLE IN T.C. NO REF., WILL BE DESTROYED.
- ⊙ FD L/T "CITY ENGR." W/ CHISELED "T" FLUSH IN WALK PER R-1.
- SET L/T "LS 5411" TAG IN T.C.

CORNER RECORD

PWFB 1818

Document Number

656

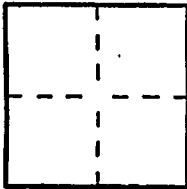
City of Burbank

County of

Los Angeles

California

Brief Legal Description Lincoln Street & Empire Avenue



CORNER TYPE

Government Corner [] Control [x]
Meander [] Property []
Rancho [] Other []
Date of Survey 09/30/10

COORDINATES (Optional)

N.
E.
Zone NAD27 [] NAD83 []
NAD83 Epoch
Elevation
Vertical Datum: NGVD29 [] NAVD88 []
Units: Metric [] Imperial [] U.S. Survey []

Corner Left as found [] Found and tagged [] Established [] Reestablished [x] Rebuilt []

Identification and type of corner found; Evidence used to identify or procedure used to establish or reestablish the corner: Found as described on the reverse of this sheet.

A description of the physical condition of the monument as found and as set or reset:

See Sheet 2

SURVEYOR'S STATEMENT

This Corner Record was prepared by me or under my direction in conformance with the Professional Land Surveyors' Act on November 1, 2010

Signed [Signature] P.L.S. or R.C.E. No. L.S. 5411



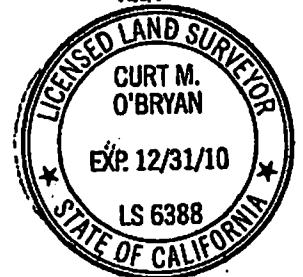
COUNTY SURVEYOR'S STATEMENT

This Corner Record was received NOV 08 2010

examined and filed NOV 24 2010

Signed [Signature] P.L.S. or R.C.E. No. 6388

Title DEPUTY COUNTY SURVEYOR



County Surveyor's Comment

LA 18227