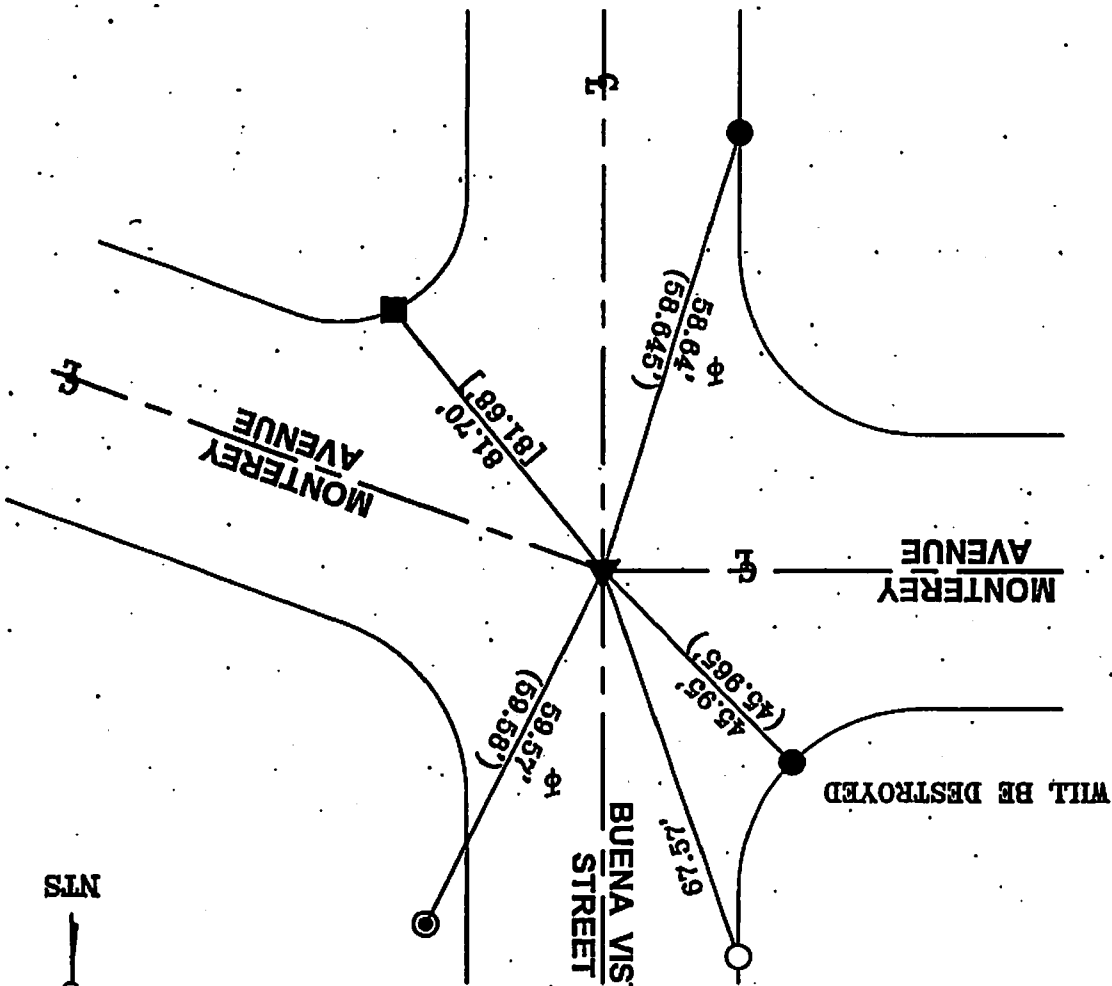


R-1 = CITY OF BURBANK THE SHEET BOOK 398, PAGE 147
 () = RECORD DISTANCE PER R-1
 R-2 = CITY OF BURBANK THE SHEET BOOK 931, PAGE 115
 [] = RECORD DISTANCE PER R-2
 φ = TANGENT OVER
 NTS



▼ PD MAG NAIL/W "IS 4016" & 4-1' O/S "C" NAILS FLUSH PER R-1 BEFORE AND AFTER CONSTRUCTION.

● PD L/T "IS 4016" W/ CHISELED "T" IN T.C. PER R-1.

■ PD L/T W/ CHISELED "T" IN T.C. PER R-2.

◎ PD L/T "IS 4016" W/ CHISELED "T" IN WALK PER R-1.

○ SET L/T "IS 6411" TAG IN T.C.

THE PURPOSE OF THIS RECORD IS TO DOCUMENT THE PERPETUATION OF FOUND MONUMENT(S) PURSUANT TO THE PLS ACT SECTION 8771. NO CLAIM IS MADE REGARDING THE CORRECTNESS OF THE POSITION(S) OF SAID MONUMENT(S), NOR THE DIMENSIONAL RELATIONSHIP TO STREET CENTERLINES OF PROPERTY BOUNDARIES.
 10-ALL-610

CORNER RECORD

PWFB 1818

652

Document Number

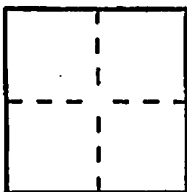
City of Burbank

County of

Los Angeles

California

Brief Legal Description Buena Vista Street & Monterey Avenue



CORNER TYPE

- Government Corner Control
- Meander Property
- Rancho Other

Date of Survey 09/30/10

COORDINATES (Optional)

N. _____
 E. _____
 Zone _____ NAD27 NAD83
 NAD83 Epoch _____
 Elevation _____
 Vertical Datum: NGVD29 NAVD88
 Units: Metric Imperial U.S. Survey

Corner — Left as found Found and tagged Established Reestablished Rebuilt

Identification and type of corner found; Evidence used to identify or procedure used to establish or reestablish the corner: Found as described on the reverse of this sheet.

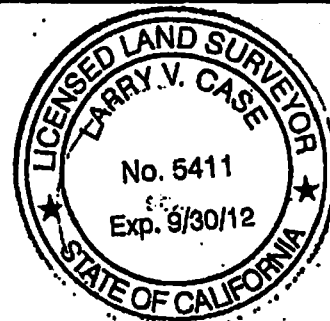
A description of the physical condition of the monument as found and as set or reset:

See Sheet 2

SURVEYOR'S STATEMENT

This Corner Record was prepared by me or under my direction in conformance with the Professional Land Surveyors' Act on November 1, 2010

Signed _____ P.L.S. or R.C.E. No. L.S. 5411



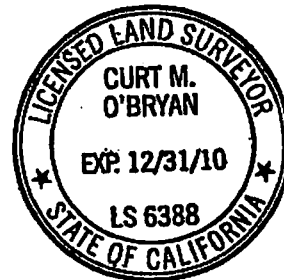
COUNTY SURVEYOR'S STATEMENT

This Corner Record was received NOV 08 2010

examined and filed NOV 24 2010

Signed _____ P.L.S. or R.C.E. No. 6388

Title DEPUTY COUNTY SURVEYOR



County Surveyor's Comment

LA 18225