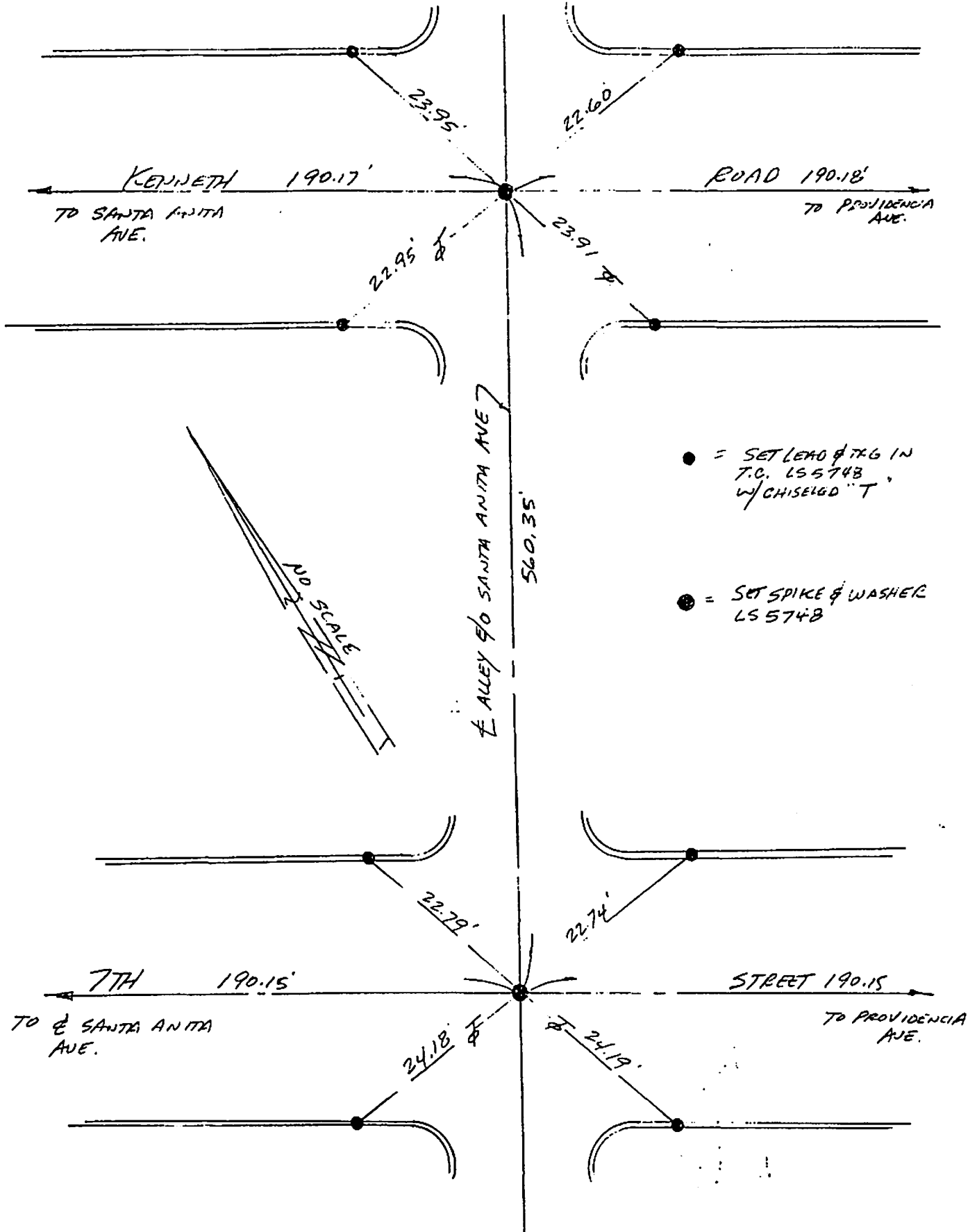


FB 338 P. 205



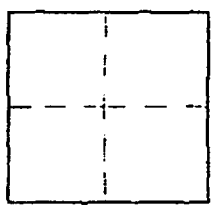
CORNER RECORD

Document Number _____

City of BURBANK

County of Los Angeles, California

Brief Legal Description CENTERLINE TIES AT INTERSECTION OF THE ALLEYS OF SANTA ANITA AVE. WITH KENNETH RD. AND 7TH STREET.



CORNER TYPE

Govt. Corner Control

Meander Property

Rancho Other

Date of Survey AUG. 30 2011

COORDINATES (Optional)

N. _____

E. _____

Zone: _____ NAD27 NAD83

NAD83 Epoch _____

Elev. _____

Vert. Datum: NGVD29 NAVD88

Meas. Units: Metric Imperial

Corner - Left as found Found & tagged Established Reestablished Rebuilt

Identification and type of corner found: Evidence used to identify or procedure used to establish or reestablish the corner:

THE PURPOSE OF THIS CENTERLINE TIE SHEET IS TO SATISFY THE REQUIREMENTS FOR THE FILING OF TRACT NO. 71512.

A description of the physical condition of the monument as found and as set or reset: _____

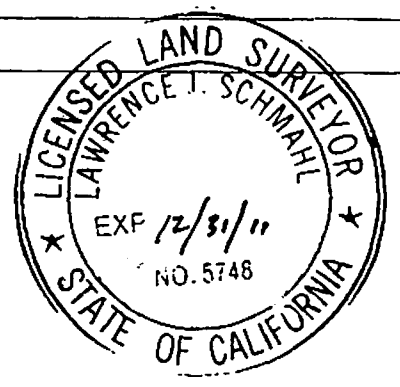
SEE PAGE 2

SURVEYOR'S STATEMENT

This Corner Record was prepared by me or under my direction in conformance

with the Land Surveyors' Act on SEPT 1 2011

Signed [Signature] P.L.S. or R.C.E. No. 5748



COUNTY SURVEYOR'S STATEMENT

This Corner Record was received _____

and examined and filed _____

Signed _____ P.L.S. or R.C.E. No. _____

Title: _____

County Surveyor's Comment _____