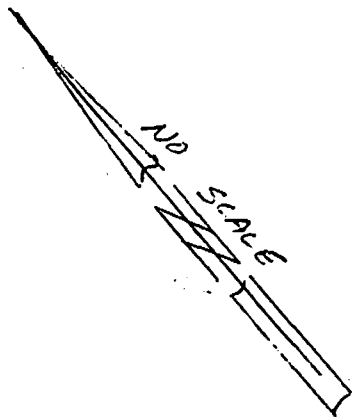
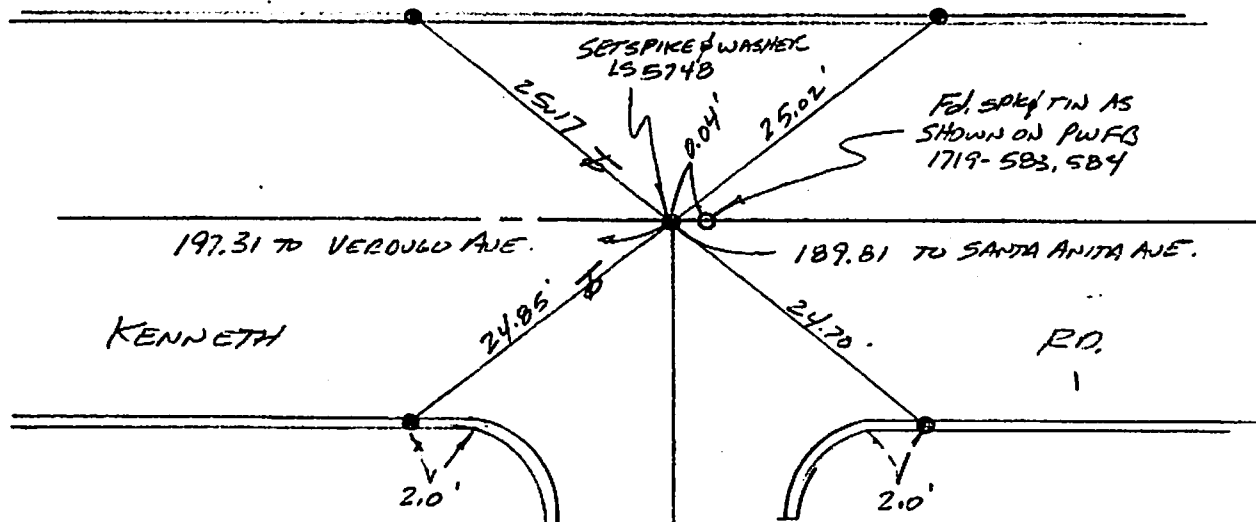


TO CITY BUREAU FC
302-50

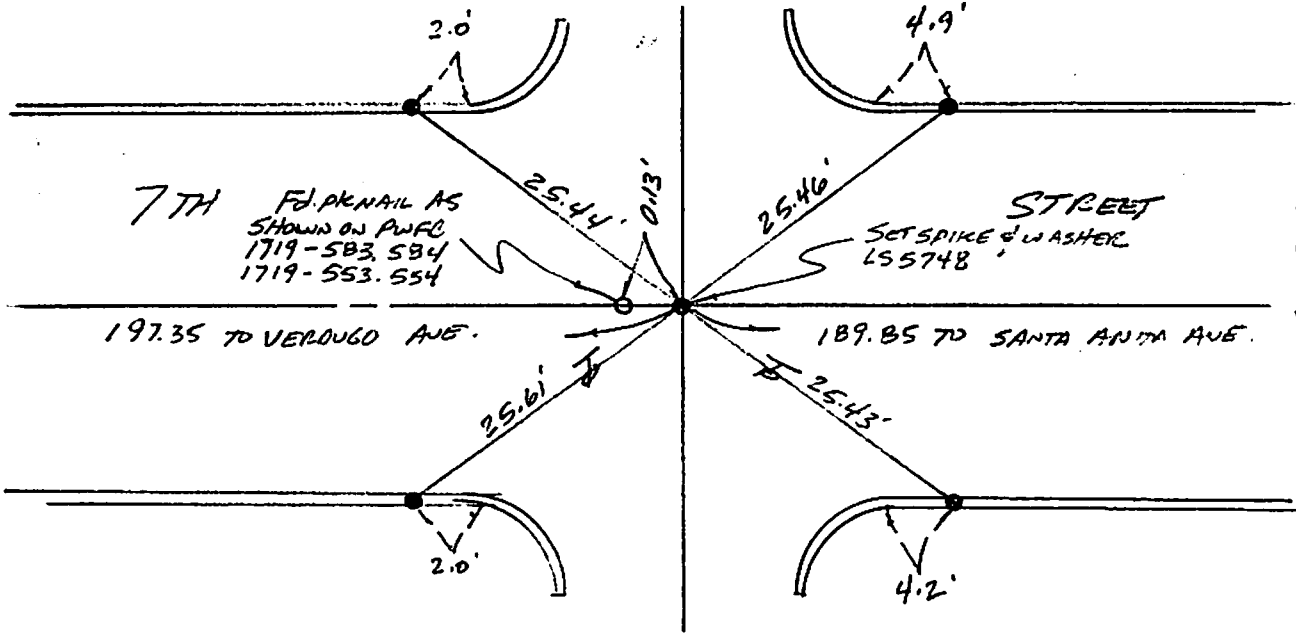
TO CITY BUREAU FC
302-50



● = SET LEAD / TAG, LS 5748
IN TOP OF CURB WITH
CHISELED 'T'
UNLESS OTHERWISE NOTED.

TO CITY BUREAU FC
322-419

TO PWFB 1719-553, 554



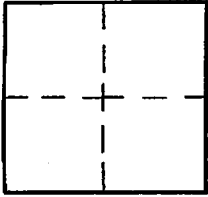
CORNER RECORD

Document Number _____

City of BURBANK

County of Los Angeles, California

Brief Legal Description CENTRELINE INTERSECTION OF ALLEY SOUTHEAST OF VERDUGO AVE WITH 7TH STREET AND KENNETH ROAD.



CORNERTYPE

Govt. Corner Control

Meander Property

Rancho Other

Date of Survey 6/08/10

COORDINATES (Optional)

N. _____

E. _____

Zone _____ NAD27 NAD83

NAD83 Epoch _____

Elev. _____

Vert. Datum: NGVD29 NAVD88

Meas. Units: Metric Imperial

Corner - Left as found Found & tagged Established Reestablished Rebuilt

Identification and type of corner found: Evidence used to identify or procedure used to establish or reestablish the corner:

SEE PAGE 2

A description of the physical condition of the monument as found and as set or reset: _____

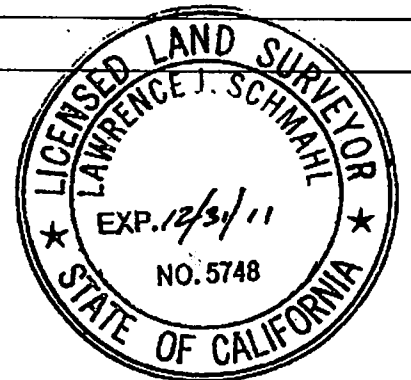
SEE PAGE 2

SURVEYOR'S STATEMENT

This Corner Record was prepared by me or under my direction in conformance

with the Land Surveyors' Act on JUNE 13 2010

Signed [Signature] P.L.S. or R.C.E. No. 5748



COUNTY SURVEYOR'S STATEMENT

This Corner Record was received _____

and examined and filed _____

Signed _____ P.L.S. or R.C.E. No. _____

Title: _____

County Surveyor's Comment _____