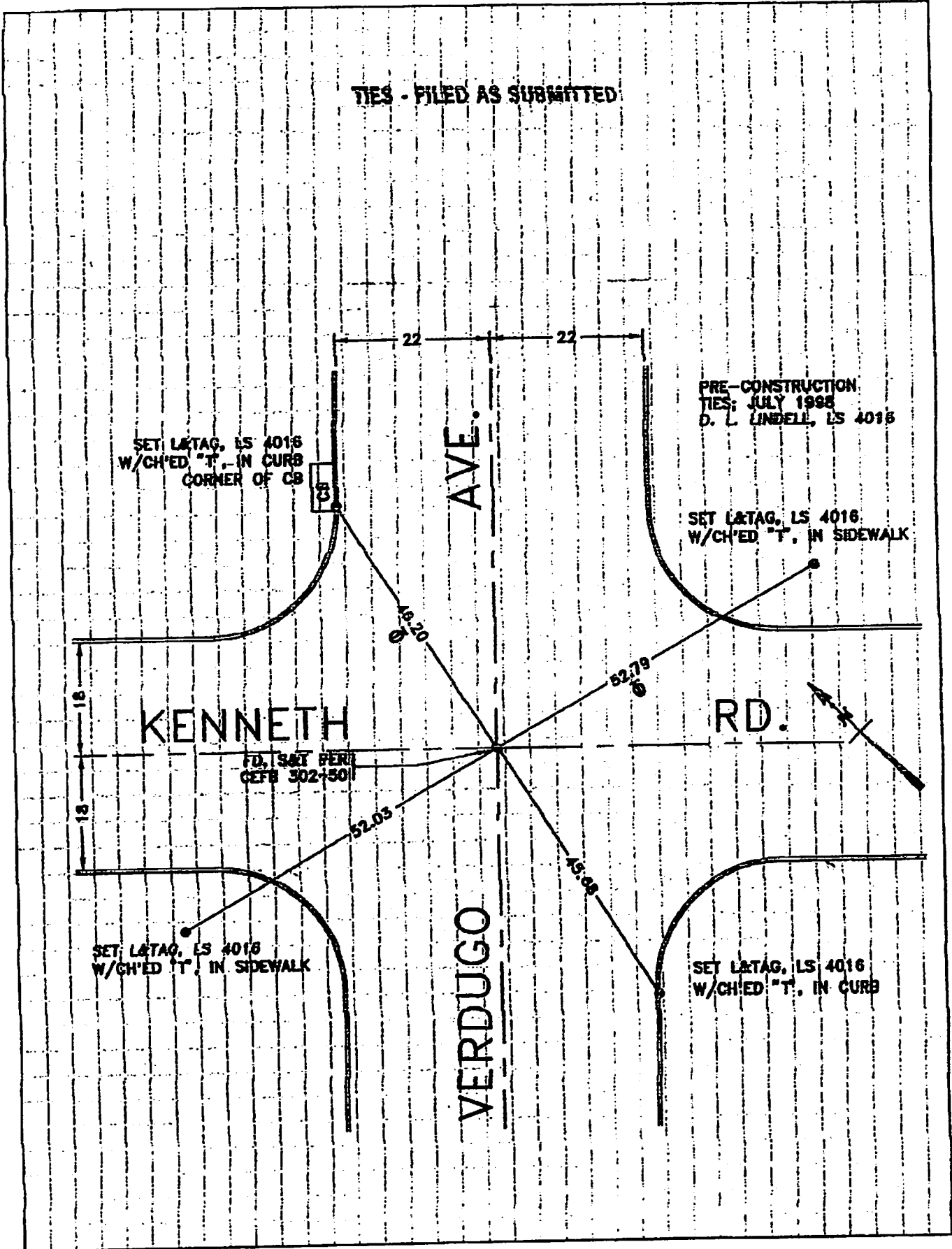
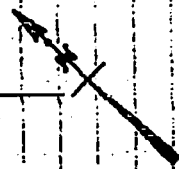


TIES - FILED AS SUBMITTED

D



O



U

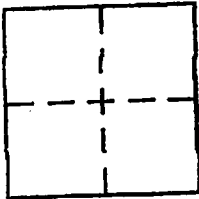
CORNER RECORD PWFB 1719

Document Number 308

City of Burbank

County of Los Angeles, California

Brief Legal Description Kenneth Rd. and Verdugo Ave.; Pre-construction ties



CORNER TYPE

Government Corner [] Control []
Meander [] Property []
Rancho [] Other [x]
Date of Survey July 1998

COORDINATES (Optional)

N.
E.
Zone NAD27 [] NAD83 []
NAD83 Epoch
Elev.
Vert. Datum: NGVD28 [] NAVD88 []
Meas. Units: Metric [] Imperial []

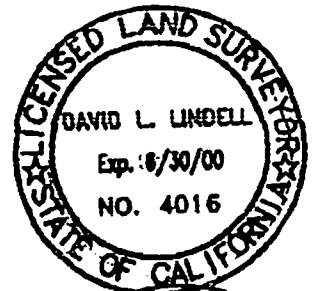
Corner - Left as found [] Found and tagged [] Established [] Reestablished [] Rebuilt []

Identification and type of corner found: Evidence used to identify or procedure used to establish or reestablish the corner:
As shown on plat, Sheet 2

A description of the physical condition of the monument as found and as set or reset:
As shown on plat, Sheet 2

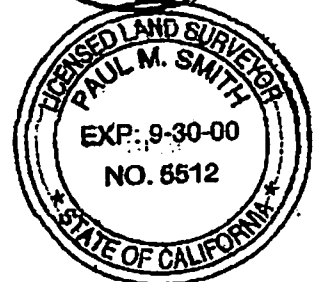
SURVEYOR'S STATEMENT

This Corner Record was prepared by me or under my direction in conformance with
the Land Surveyor's Act on August 10, 1998
Signed David L. Lindell P.L.S. or R.C.E. No. LS 4016



COUNTY SURVEYOR'S STATEMENT

This Corner Record was received SEP 14 1998
and examined and filed SEP 22 1998
Signed Paul M. Smith P.L.S. or R.C.E. No.
Title DEPUTY COUNTY SURVEYOR



County Surveyor's Comment BRR

YES - FILED AS SUBMITTED