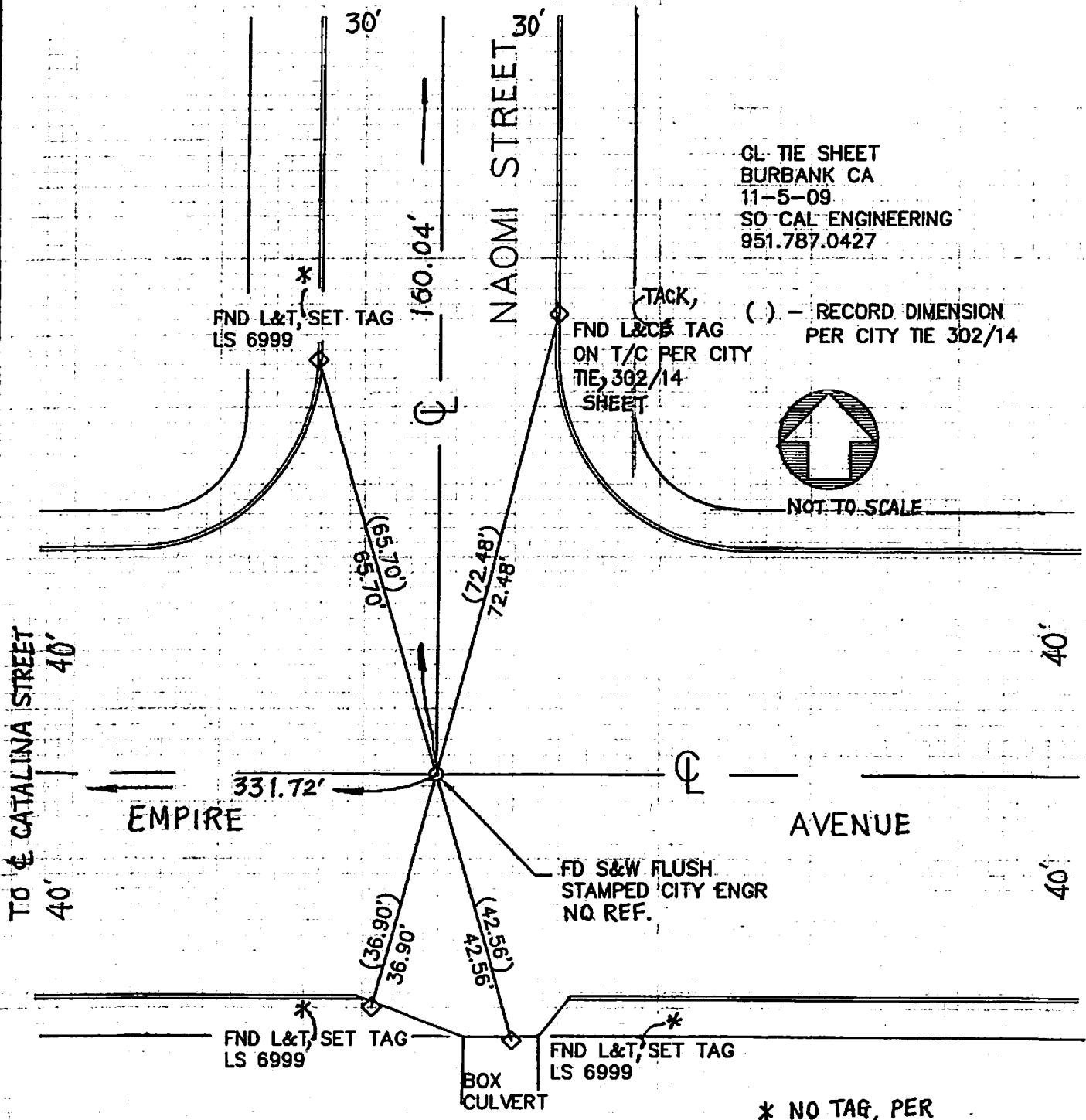


TO Φ ALLEY

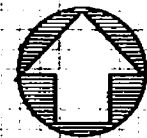
CL TIE SHEET
BURBANK CA
11-5-09
SO CAL ENGINEERING
951.787.0427



FND L&T, SET TAG
LS 6999

TACK,
FND L&T TAG
ON T/C PER CITY
TIE, 302/14
SHEET

() - RECORD DIMENSION
PER CITY TIE 302/14



NOT TO SCALE

TO Φ CATALINA STREET
40'

EMPIRE

AVENUE

FD S&W FLUSH
STAMPED CITY ENGR
NO REF.

FND L&T, SET TAG
LS 6999

BOX
CULVERT

FND L&T, SET TAG
LS 6999

* NO TAG, PER
CITY TIE SHEET
302/14

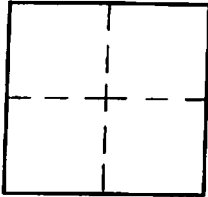
CORNER RECORD

Document Number _____

City of BURBANK

County of Los Angeles, California

Brief Legal Description INT NAOMI ST + EMPIRE AVE



CORNERTYPE

Govt. Corner Control
 Meander Property
 Rancho Other
 Date of Survey 11-5-09

COORDINATES (Optional)

N. _____
 E. _____
 Zone _____ NAD27 NAD83
 NAD83 Epoch _____
 Elev. _____
 Vert. Datum: NGVD29 NAVD88
 Meas. Units: Metric Imperial

Corner - Left as found Found & tagged Established Reestablished Rebuilt

Identification and type of corner found: Evidence used to identify or procedure used to establish or reestablish the corner:

FIND SW AT E INTERSECTION STAMPED
CITY ENGR PER CITY TIE SHEET
302 / 14 WITH 3 L&T TIES WITHOUT
TAGS AND 1 BLETTE TAGGED CE
PER SAID TIE SHEET

A description of the physical condition of the monument as found and as set or reset:

ADDED TAG LS 6999 TO UNTAGGED
TIES - SEE SKETCH

SURVEYOR'S STATEMENT

This Corner Record was prepared by me or under my direction in conformance

with the Land Surveyors' Act on 11-18 2009

Signed A [Signature] P.L.S. or R.C.E. No. 6999



COUNTY SURVEYOR'S STATEMENT

This Corner Record was received _____

and examined and filed _____

Signed _____ P.L.S. or R.C.E. No. _____

Title: _____

County Surveyor's Comment _____

