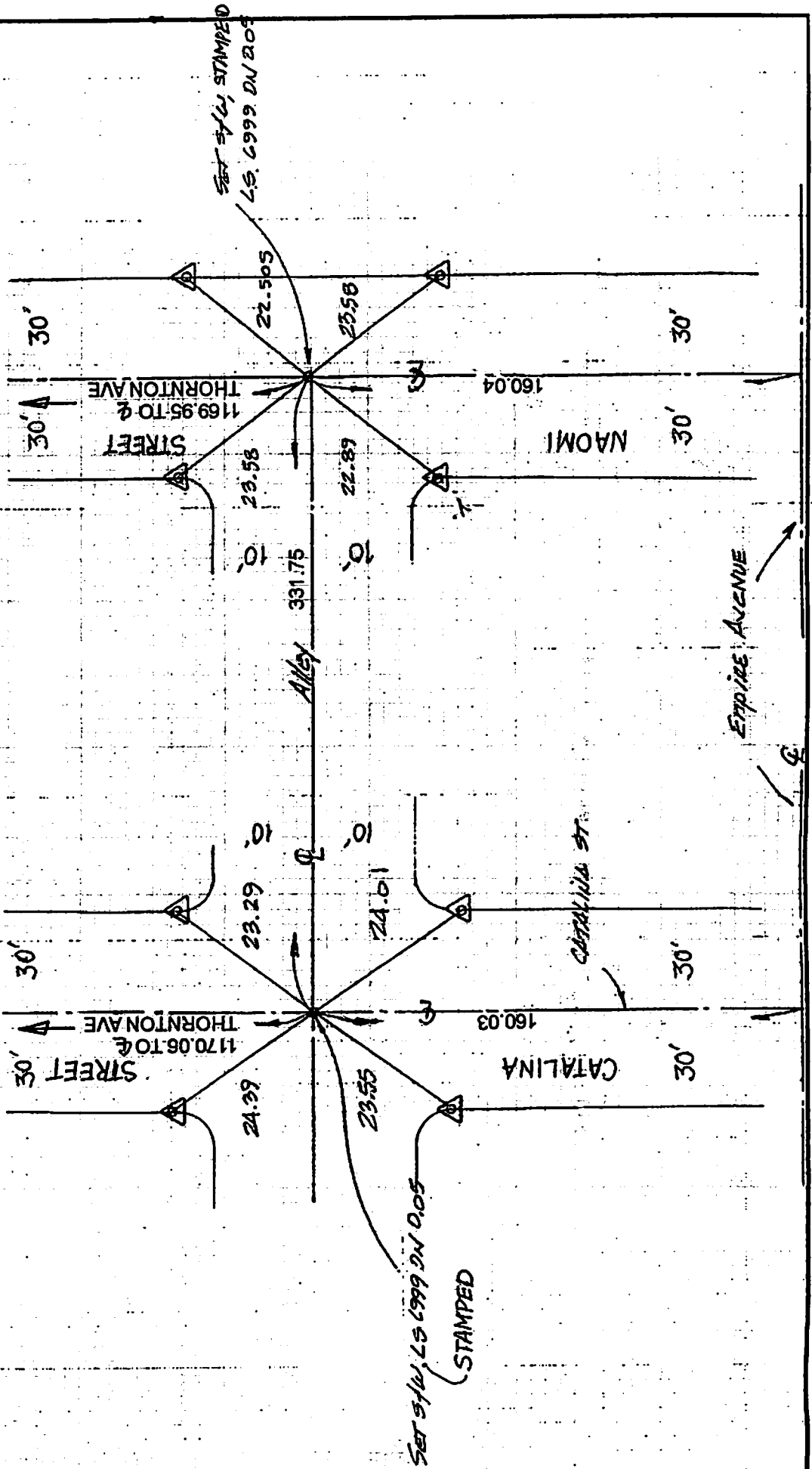


ETAS C ALLEY N. OF EMPIRE AVE
 2247 NAOMI ST BURBANK CA.
 Job # 2896

NOT TO SCALE
 JACK, BED
 = SET L. 1/16" 5/16" 1999 IN THE
 TANGENT TIES



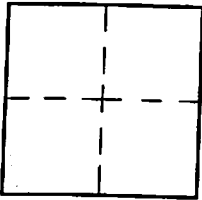
CORNER RECORD

Document Number _____

City of BURBANK

County of Los Angeles, California

Brief Legal Description INT ALLEY 180' ± N'LY OF EMPIRE AVE WITH NAOMI AVE AND WITH CATALINA ST



CORNERTYPE

Govt. Corner Control
 Meander Property
 Rancho Other
 Date of Survey 11-5-09

COORDINATES (Optional)

N. _____
 E. _____
 Zone _____ NAD27 NAD83
 NAD83 Epoch _____
 Elev. _____
 Vert. Datum: NGVD29 NAVD88
 Meas. Units: Metric Imperial

Corner - Left as found Found & tagged Established Reestablished Rebuilt

Identification and type of corner found: Evidence used to identify or procedure used to establish or reestablish the corner:

EST ALLEY BY PROPORTION BETWEEN EMPIRE
AVE & THORNTON AVE MEASURED ALONG
CENTERLINE OF NAOMI ST AND ALONG
CATALINA ST PER TR 9443 MB 144 / 5

A description of the physical condition of the monument as found and as set or reset:

SET S+W DN 0.05 STAMPED LS 6999
WITH TIES - SEE SKETCH

SURVEYOR'S STATEMENT

This Corner Record was prepared by me or under my direction in conformance

with the Land Surveyors' Act on 11-18 2009

Signed A. Thelwell PLS. or R.C.E. No. 6999



COUNTY SURVEYOR'S STATEMENT

This Corner Record was received _____

and examined and filed _____

Signed _____ P.L.S. or R.C.E. No. _____

Title: _____

County Surveyor's Comment _____

