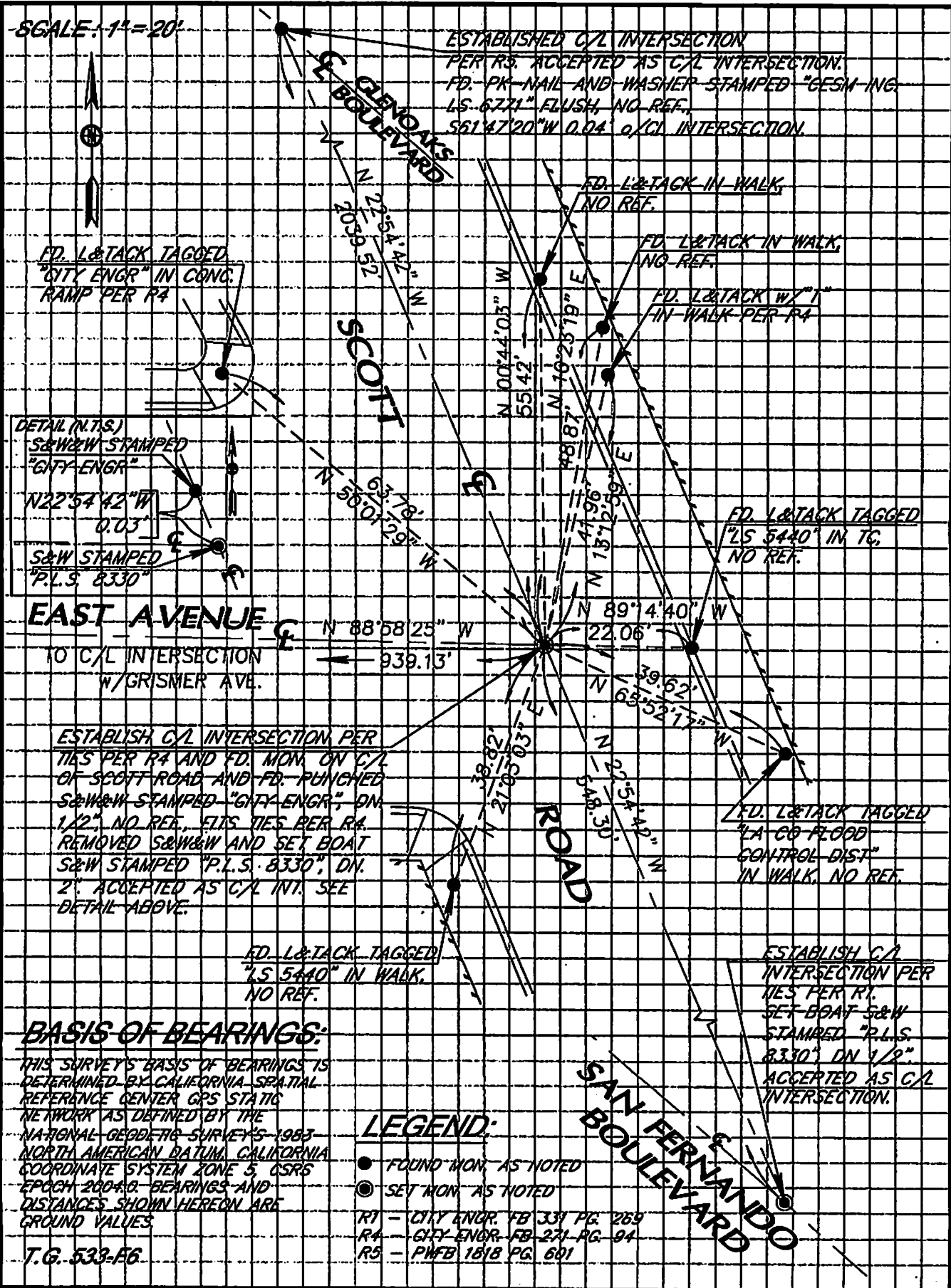


SCALE: 1" = 20'



CORNER RECORD

PWFB 1819

Document Number

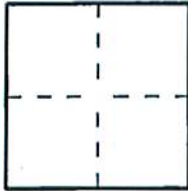
640

City of BURBANK

County of LOS ANGELES

California

Brief Legal Description INTERSECTION OF SCOTT ROAD AND EAST AVENUE.



CORNER TYPE

Government Corner Control
Meander Property
Rancho Other
Date of Survey 03/23/2010

COORDINATES (Optional)

N. 1,892,260.617 US FT
E. 6,464,241.387 US FT
Zone NAD83 NAD27
NAD83 Epoch CSRS 2004.0
Elevation 5
Vertical Datum: NGVD29 NAVD88
Units: Metric Imperial U.S. Survey

Corner — Left as found Found and tagged Established Reestablished Rebuilt

Identification and type of corner found; Evidence used to identify or procedure used to establish or reestablish the corner:

ESTABLISHED CENTERLINE INTERSECTION PER FOUND TIES PER CITY ENGINEER FIELD BOOK 271 PAGE 94 AND FOUND MONUMENTS ON CENTERLINE OF SCOTT ROAD. SURVEY WORK ASSOCIATED WITH TRACT NO. 67372

A description of the physical condition of the monument as found and as set or reset:

SET BOAT SPIKE AND WASHER STAMPED "P.L.S. 8330", DOWN 2", AT CENTERLINE INTERSECTION AS SHOWN ON PAGE 2.

SURVEYOR'S STATEMENT

This Corner Record was prepared by me or under my direction in conformance with the Professional Land Surveyors' Act on MARCH 25, 2010

Signed [Signature] P.L.S. or R.C.E. No. 8330



COUNTY SURVEYOR'S STATEMENT

This Corner Record was received MAR 30 2010
examined and filed APR 27 2010

Signed [Signature] P.L.S. or R.C.E. No. 6388

Title DEPUTY COUNTY SURVEYOR



County Surveyor's Comment _____