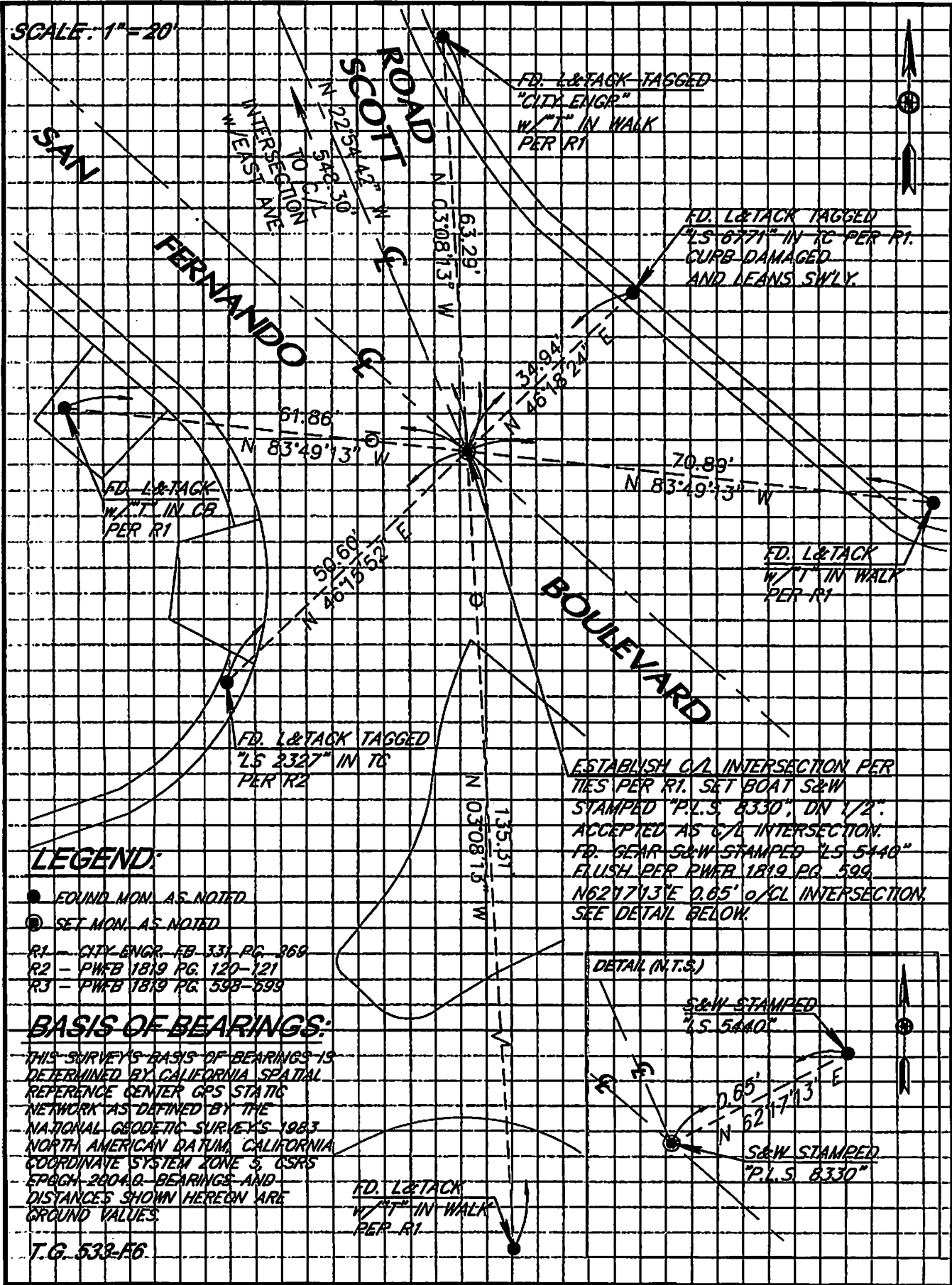


SCALE: 1"=20'



LEGEND:

- FOUND MON. AS NOTED
- ⊙ SET MON. AS NOTED

- R1 - CITY ENGR. FB 331 PG. 268
- R2 - PWFB 1819 PG. 120-121
- R3 - PWFB 1819 PG. 593-599

BASIS OF BEARINGS:

THIS SURVEY'S BASIS OF BEARINGS IS DETERMINED BY CALIFORNIA SPATIAL REFERENCE CENTER GPS STATIC NETWORK AS DEFINED BY THE NATIONAL GEODETIC SURVEY'S 1983 NORTH AMERICAN DATUM CALIFORNIA COORDINATE SYSTEM ZONE 5, CSRS EPOCH 2004.0. BEARINGS AND DISTANCES SHOWN HEREON ARE GROUND VALUES.

T.G. 533-F6

CORNER RECORD

PWFB 1819

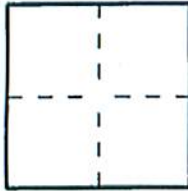
638

Document Number

City of BURBANK

County of LOS ANGELES, California

Brief Legal Description INTERSECTION OF SAN FERNANDO BOULEVARD AND SCOTT ROAD.



CORNER TYPE

- Government Corner Control
- Meander Property
- Rancho Other

Date of Survey 03/23/2010

COORDINATES (Optional)

N. 1,891,755.606 U.S. FT
 E. 6,464,454.836 U.S. FT
 Zone 5 NAD27 NAD83
 NAD83 Epoch CSRS 2004.0
 Elevation. _____
 Vertical Datum: NGVD29 NAVD88
 Units: Metric Imperial U.S. Survey

Corner — Left as found Found and tagged Established Reestablished Rebuilt

Identification and type of corner found; Evidence used to identify or procedure used to establish or reestablish the corner:

ESTABLISHED CENTERLINE INTERSECTION PER FOUND TIES PER CITY ENGINEER FIELD BOOK 331 PAGE 269 AS SHOWN ON PAGE 2.
SURVEY WORK ASSOCIATED WITH TRACT NO. 67372.

A description of the physical condition of the monument as found and as set or reset:

SET BOAT SPIKE AND WASHER STAMPED "P.L.S. 8330", DOWN 1/2", AT CENTERLINE INTERSECTION, AS SHOWN ON PAGE 2.

SURVEYOR'S STATEMENT

This Corner Record was prepared by me or under my direction in conformance with the Professional Land Surveyors' Act on MARCH 25, 2010

Signed [Signature] P.L.S. or R.C.E. No. 8330



COUNTY SURVEYOR'S STATEMENT

This Corner Record was received MAR 30 2010

examined and filed APR 27 2010

Signed [Signature] P.L.S. or R.C.E. No. 6388

Title DEPUTY COUNTY SURVEYOR



County Surveyor's Comment _____