

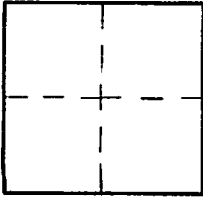
CORNER RECORD

Document Number FB 337 P. 329

City of BURBANK

County of Los Angeles, California

Brief Legal Description CENTERLINE TIES FOR ALLEY + KENNETH RD. AND ALLEY + SEVENTH ST. PER TRACT NO. 63054 MB 1347-1-2



CORNERTYPE

Govt. Corner Control
 Meander Property
 Rancho Other
 Date of Survey AUG. 23 2009

COORDINATES (Optional)

N. _____
 E. _____
 Zone _____ NAD27 NAD83
 NAD83 Epoch _____
 Elev. _____
 Vert. Datum: NGVD29 NAVD88
 Meas. Units: Metric Imperial

Corner - Left as found Found & tagged Established Reestablished Rebuilt

Identification and type of corner found: Evidence used to identify or procedure used to establish or reestablish the corner:

CENTERLINE TIES FOR ALLEY + KENNETH RD AND ALLEY + SEVENTH ST.
PER REQUIREMENTS FOR FILING OF TRACT NO. 63054 MB 1347-1-2

A description of the physical condition of the monument as found and as set or reset: _____

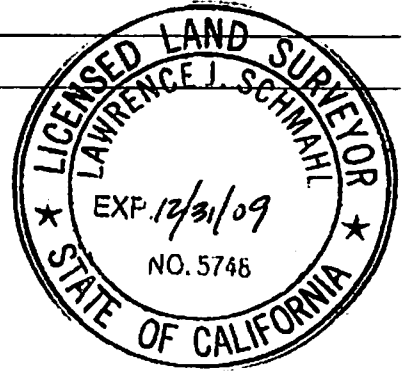
SEE PAGE 2

SURVEYOR'S STATEMENT

This Corner Record was prepared by me or under my direction in conformance

with the Land Surveyors' Act on AUG. 27 2009

Signed [Signature] P.L.S. or R.C.E. No. 5748



COUNTY SURVEYOR'S STATEMENT

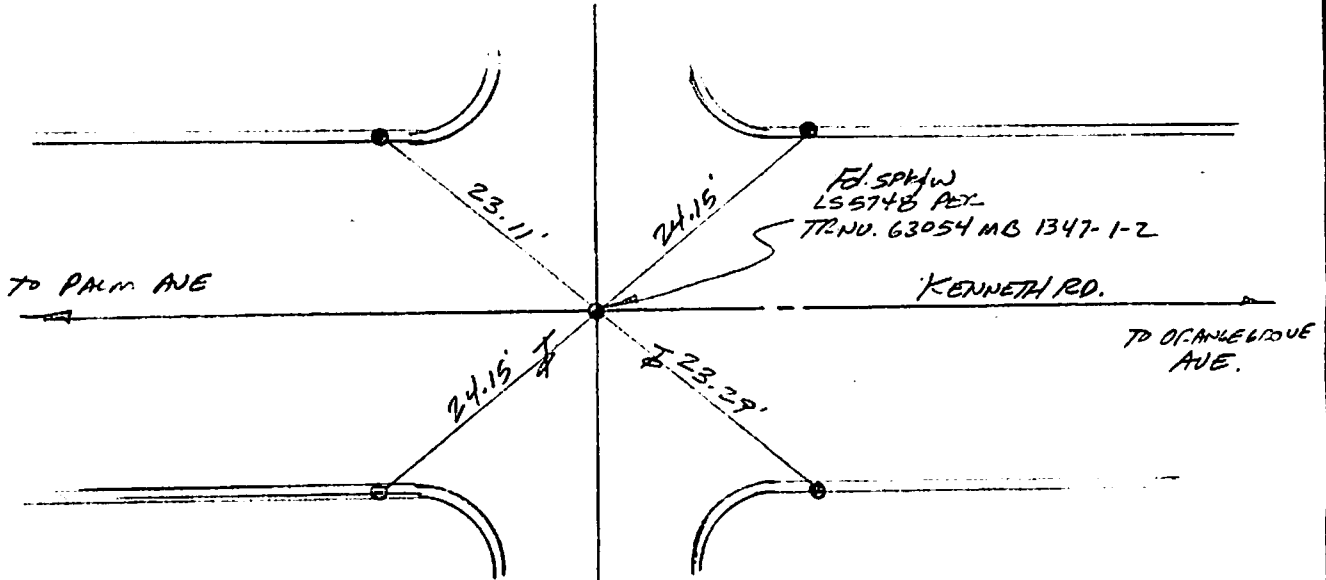
This Corner Record was received _____

and examined and filed _____

Signed _____ P.L.S. or R.C.E. No. _____

Title: _____

County Surveyor's Comment _____



● = SET L/TAG LS 5748
IN TOP OF CURB
w/ CHISELED 'T'
UNLESS OTHERWISE NOTED.

ALLEY

