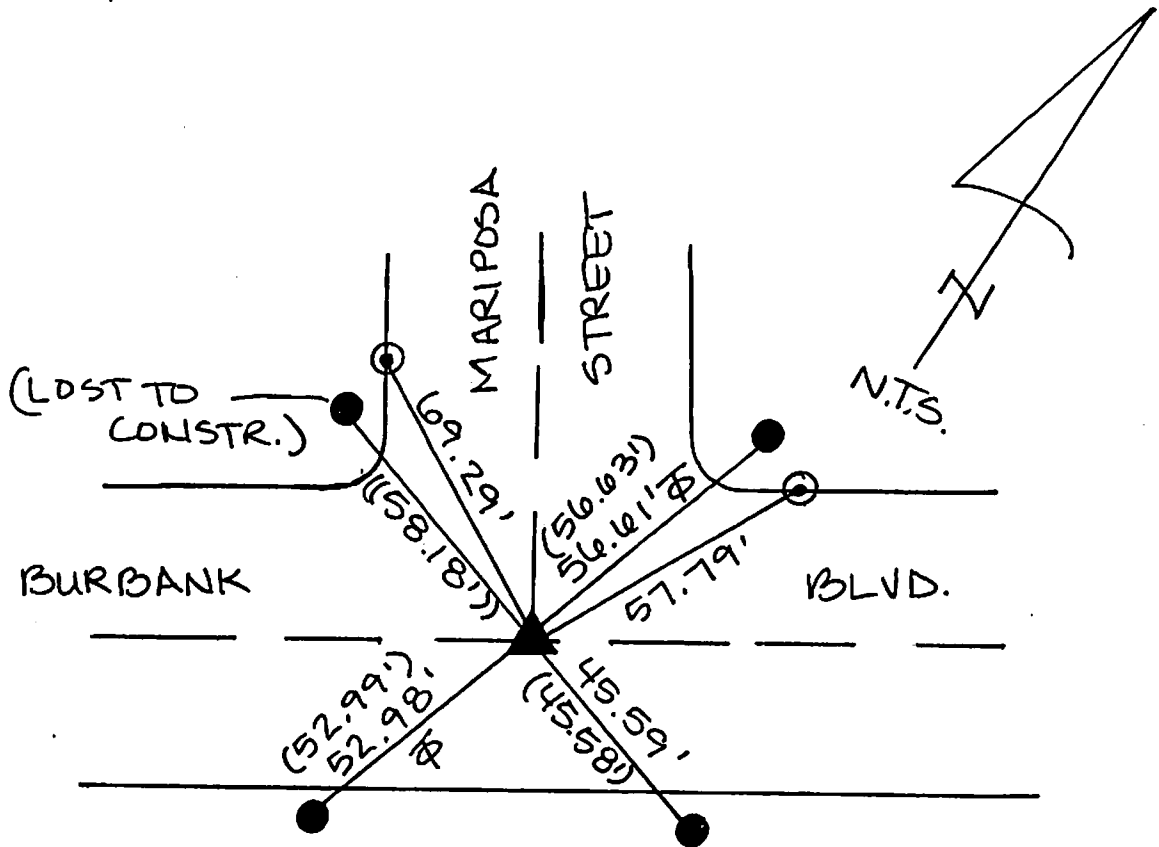


FB 337 P. 275

R-1 = CITY OF BURBANK F.B. 322 PG 45
 () = REC. DIST. PER R-1.
 () = REC. & MEAS. DIST. PER R-1.
 ⊕ = TANGENT OVER



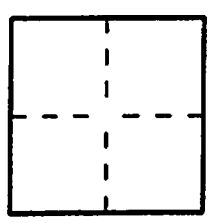
- ▲ FD. SPK. & C.E. WASHER FLUSH (PER R-1) PRIOR TO CONSTR. SET SPK/W L.S. 5411 AFTER CONSTR.
- FD. L & C.E. TAG W/CHIS. 'T' IN WALK (PER R-1).
- ⊙ SET L/T L.S. 5411 IN T.C.

The purpose of this record is to document the perpetuation of found monument(s) pursuant to the PLS Act Section 8771. No claim is made regarding the correctness of the position(s) of said monument(s), nor the dimensional relationship to street centerlines or property boundaries.

07-ALL-707

CORNER RECORD PWFB 1718 Document Number 1038
 City of Burbank County of Los Angeles, California
 Brief Legal Description Burbank Blvd & Mariposa Street

LA 15752



CORNER TYPE
 Government Corner Control
 Meander Property
 Rancho Other
 Date of Survey 3/27/08

COORDINATES (Optional)
 N. _____
 E. _____
 Zone _____ NAD27 NAD83
 NAD83 Epoch _____
 Elevation _____
 Vertical Datum: NGVD29 NAVD88
 Units: Metric Imperial U.S. Survey

Corner — Left as found Found and tagged Established Reestablished Rebuilt

Identification and type of corner found; Evidence used to identify or procedure used to establish or reestablish the corner:
Found as described on the reverse of this sheet.

A description of the physical condition of the monument as found and as set or reset: _____

See Sheet 2

SURVEYOR'S STATEMENT

This Corner Record was prepared by me or under my direction in conformance with
 the Professional Land Surveyors' Act on April 19, 2008

Signed [Signature] P.L.S. or R.C.E. No. L.S. 5411



COUNTY SURVEYOR'S STATEMENT

This Corner Record was received JUL 08 2008

examined and filed JUL 30 2008

Signed [Signature] P.L.S. or R.C.E. No. 6388

Title DEPUTY COUNTY SURVEYOR



County Surveyor's Comment _____