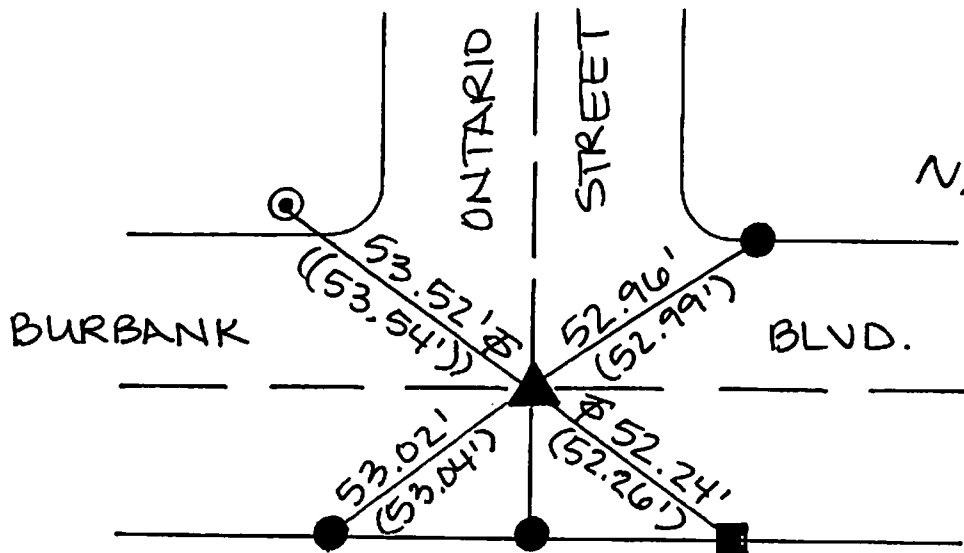


FB 337 P. 271

R-1= CITY OF BURBANK F.B. 334 PG 325
 () = REC. DIST. PER R-1.
 R-2= CITY OF BURBANK F.B. 322 PG 23
 () = REC. DIST. PER R-2.
 ⊕ = TANGENT OVER



▲ FD. SPK. & C.E. WASHER FLUSH (PER R-1) PRIOR TO CONSTR. SET SPK/W L.S. 5411 AFTER CONSTR.

● FD. L/T W/CHIS. "T" IN T.C. (PER R-1). ADDED TAG L.S. 5411.

⊙ FD. L & C.E. TAG W/CHIS. "T" IN WALK (PER R-2.)

■ FD. L/T L.S. 4016 W/CHIS. "T" IN T.C. (PER R-1).

The purpose of this record is to document the perpetuation of found monument(s) pursuant to the PLS Act Section 8771. No claim is made regarding the correctness of the position(s) of said monument(s), nor the dimensional relationship to street centerlines or property boundaries.

07-ALL-707

CORNER RECORD

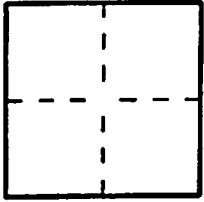
PWFB 1718

Document Number 1034

City of Burbank County of Los Angeles, California

Brief Legal Description Burbank Blvd & Ontario Street

COORDINATES (Optional)



CORNER TYPE

Government Corner Control
Meander Property
Rancho Other
Date of Survey 3/27/08

N. _____
E. _____
Zone _____ NAD27 NAD83
NAD83 Epoch _____
Elevation _____
Vertical Datum: NGVD29 NAVD88
Units: Metric Imperial U.S. Survey

LA 15750

Corner — Left as found Found and tagged Established Reestablished Rebuilt

Identification and type of corner found; Evidence used to identify or procedure used to establish or reestablish the corner:
Found as described on the reverse of this sheet.

A description of the physical condition of the monument as found and as set or reset: _____

See Sheet 2

SURVEYOR'S STATEMENT

This Corner Record was prepared by me or under my direction in conformance with the Professional Land Surveyors' Act on April 19, 2008

Signed [Signature] P.L.S. or R.C.E. No. L.S. 5411



COUNTY SURVEYOR'S STATEMENT

This Corner Record was received JUL 08 2008

examined and filed JUL 30 2008

Signed [Signature] P.L.S. or R.C.E. No. 6388

Title DEPUTY COUNTY SURVEYOR



County Surveyor's Comment _____