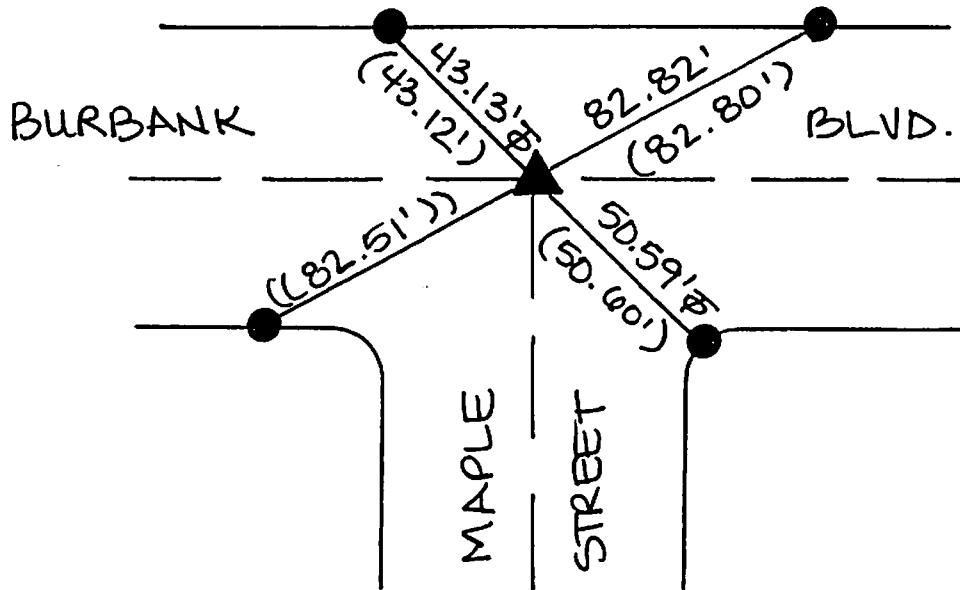
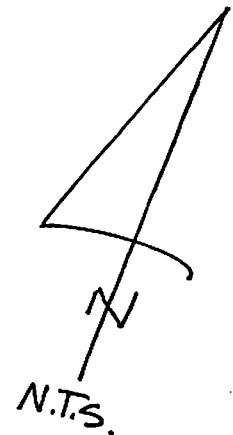


FB 337 P. 267

R-1= CITY OF BURBANK F.B. 322 PG 11  
 ( ) = REC. DIST. PER R-1.  
 ( ) = REC. & MEAS. DIST. PER R-1.  
 ⌀ = TANGENT OVER



▲ FD. SPK & C.E. WASHER FLUSH (PER R-1) PRIOR TO CONSTR. SET SPK W L.S. 5411 AFTER CONSTR.

● FD. L/T W/CHIS. "T" INT.C. (PER R-1). ADDED TAG L.S. 5411.

The purpose of this record is to document the perpetuation of found monument(s) pursuant to the PLS Act Section 8771. No claim is made regarding the correctness of the position(s) of said monument(s), nor the dimensional relationship to street centerlines or property boundaries.

07-ALL-707

CORNER RECORD

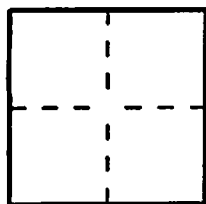
PWFB 1718

Document Number 1030

City of Burbank County of Los Angeles, California

Brief Legal Description Burbank Blvd & Maple Street

LA 157-40



CORNER TYPE

Government Corner [ ] Control [ ]
Meander [ ] Property [ ]
Rancho [ ] Other [x]
Date of Survey 3/27/08

COORDINATES (Optional)

N.
E.
Zone NAD27 [ ] NAD83 [ ]
NAD83 Epoch
Elevation.
Vertical Datum: NGVD29 [ ] NAVD88 [ ]
Units: Metric [ ] Imperial [ ] U.S. Survey [ ]

Corner Left as found [ ] Found and tagged [ ] Established [ ] Reestablished [x] Rebuilt [ ]

Identification and type of corner found; Evidence used to identify or procedure used to establish or reestablish the corner.
Found as described on the reverse of this sheet.

A description of the physical condition of the monument as found and as set or reset:

See Sheet 2

SURVEYOR'S STATEMENT

This Corner Record was prepared by me or under my direction in conformance with the Professional Land Surveyors' Act on April 19, 2008

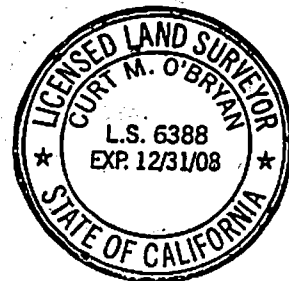
Signed [Signature] P.L.S. or R.C.E. No. L.S. 5411



COUNTY SURVEYOR'S STATEMENT

This Corner Record was received JUL 08 2008
examined and filed JUL 30 2008

Signed [Signature] P.L.S. or R.C.E. No. 6388
Title DEPUTY COUNTY SURVEYOR



County Surveyor's Comment