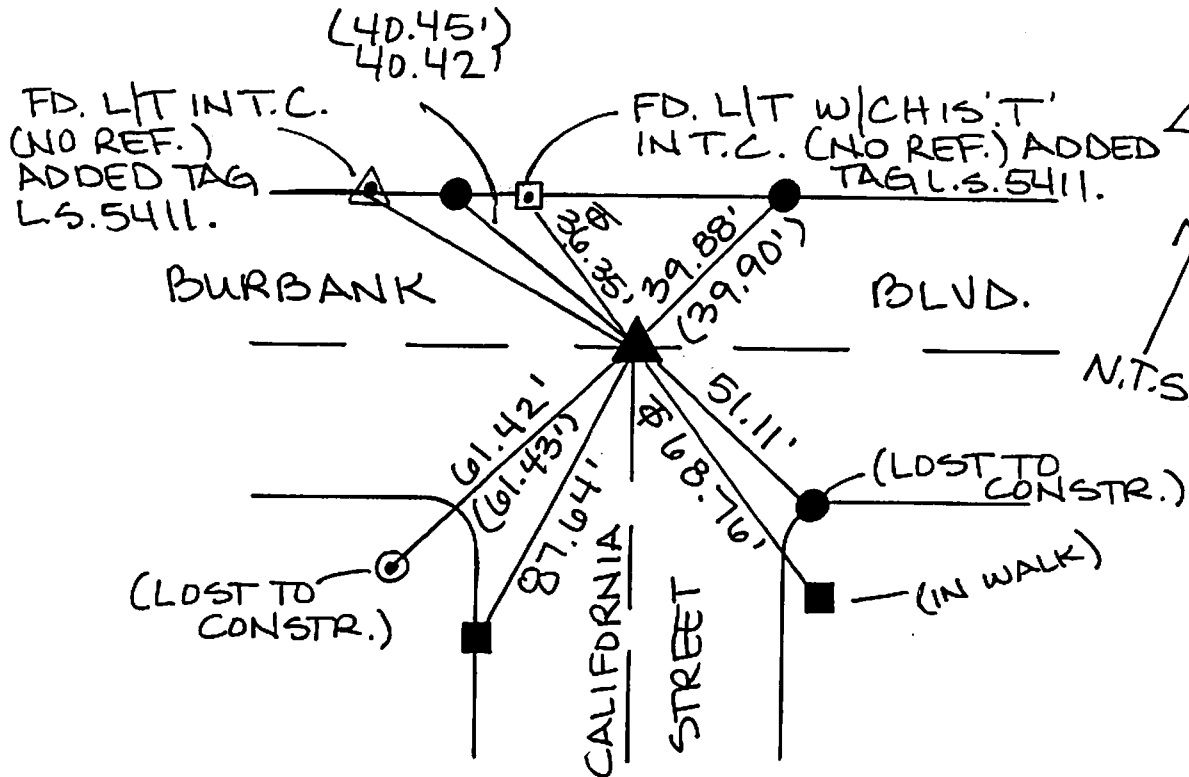


FB 337 P. 263

R-1 = CITY OF BURBANK F.B. 322 PG 21  
 ( ) = REC. DIST. PER R-1.  
 ⊕ = TANGENT OVER



- ▲ FD. SPK. & C.E. WASHER FLUSH (PER R-1) PRIOR TO CONSTR. SET SPK/W L.S. 5411 AFTER CONSTR.
- FD. L/T W/CHIS."T" IN T.C. (PER R-1). ADDED TAG L.S. 5411.
- ⊙ FD. L & C.E. TAG W/CHIS."T" IN WALK (PER R-1)
- SET L/T L.S. 5411 INT.C. (UNLESS NOTED OTHERWISE)

The purpose of this record is to document the perpetuation of found monument(s) pursuant to the PLS Act Section 8771. No claim is made regarding the correctness of the position(s) of said monument(s), nor the dimensional relationship to street centerlines or property boundaries.

CORNER RECORD

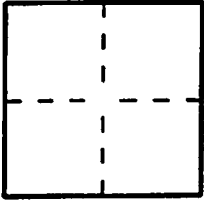
PWFB 1718

Document Number 1026

City of Burbank County of Los Angeles, California

Brief Legal Description Burbank Blvd & California Street

COORDINATES (Optional)



CORNER TYPE

Government Corner [ ] Control [ ]
Meander [ ] Property [ ]
Rancho [ ] Other [x]
Date of Survey 3/27/08

N.
E.
Zone NAD27 [ ] NAD83 [ ]
NAD83 Epoch
Elevation.
Vertical Datum: NGVD29 [ ] NAVD88 [ ]
Units: Metric [ ] Imperial [ ] U.S. Survey [x]

LA 15746

Cornet - Left as found [ ] Found and tagged [ ] Established [ ] Reestablished [x] Rebuilt [ ]

Identification and type of corner found; Evidence used to identify or procedure used to establish or reestablish the corner:
Found as described on the reverse of this sheet.

A description of the physical condition of the monument as found and as set or reset:

See Sheet 2

SURVEYOR'S STATEMENT

This Corner Record was prepared by me or under my direction in conformance with the Professional Land Surveyors' Act on April 19, 2008

Signed [Signature] P.L.S. or R.C.E. No. L.S. 5411



COUNTY SURVEYOR'S STATEMENT

This Corner Record was received JUL 08 2008

examined and filed JUL 30 2008

Signed [Signature] P.L.S. or R.C.E. No. 6388

Title DEPUTY COUNTY SURVEYOR



County Surveyor's Comment