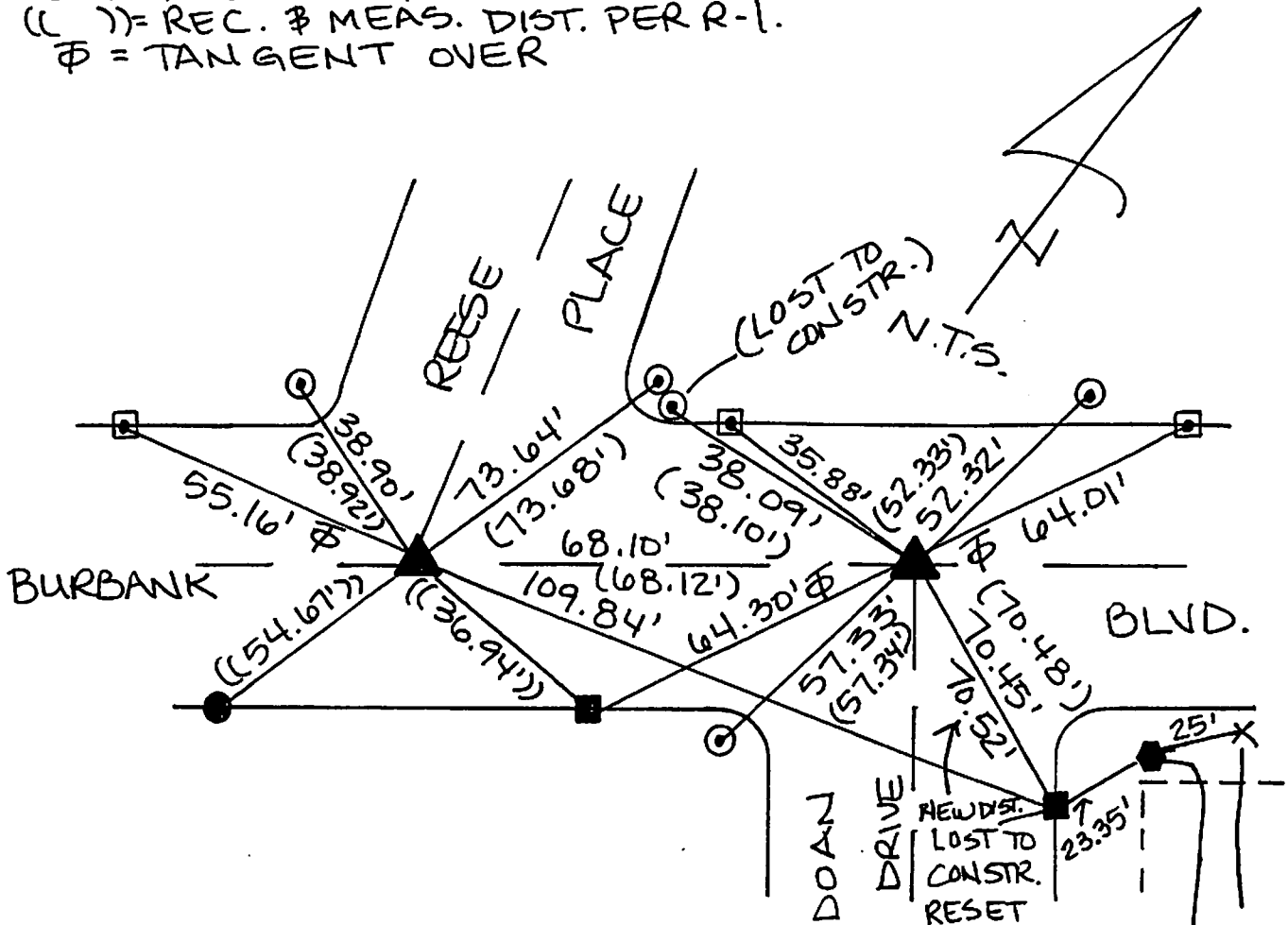


FB 337 P. 217

R-1 = CITY OF BURBANK F.B. 322 PG 39  
 ( ) = REC. DIST. PER R-1.  
 ( ) = REC. & MEAS. DIST. PER R-1.  
 ⊕ = TANGENT OVER



- ▲ FD. SPK. & C.E WASHER FLUSH (PER R-1) PRIOR TO CONSTR. SET SPK W L.S. 5411 AFTER CONSTR.
  - FD. L/T W/CHIS. 'T' INT.C. (PER R-1). ADDED TAG L.S. 5411.
  - FD. L & C.E TAG W/CHIS. 'T' IN WALK (PER R-1).
  - FD. L & C.E. TAG W/CHIS. 'T' IN T.C. (PER R-1).
  - SET L/T L.S. 5411 INT.C.
- SET CHIS. 'X' TEMP. TIE.  
 FD. L/T RCE 22105 1' FROM BACK OF WALK (NO REF.)  
 LOST TO CONSTR. RESET W/L & T L.S. 5411.

The purpose of this record is to document the perpetuation of found monument(s) pursuant to the PLS Act Section 8771. No claim is made regarding the correctness of the position(s) of said monument(s), nor the dimensional relationship to street centerlines or property boundaries.

PWFB 1718

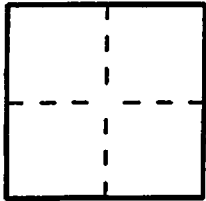
CORNER RECORD

Document Number 980

City of Burbank County of Los Angeles, California

Brief Legal Description Burbank Blvd & Reese Place; Burbank Blvd & Doan Drive

COORDINATES (Optional)



CORNER TYPE

Government Corner  Control   
Meander  Property   
Rancho  Other   
Date of Survey 3/27/08

N. \_\_\_\_\_  
E. \_\_\_\_\_  
Zone \_\_\_\_\_ NAD27  NAD83   
NAD83 Epoch \_\_\_\_\_  
Elevation \_\_\_\_\_  
Vertical Datum: NGVD29  NAVD88   
Units: Metric  Imperial  U.S. Survey

Corner — Left as found  Found and tagged  Established  Reestablished  Rebuilt

Identification and type of corner found; Evidence used to identify or procedure used to establish or reestablish the corner:  
Found as described on the reverse of this sheet.

A description of the physical condition of the monument as found and as set or reset: \_\_\_\_\_

See Sheet 2

SURVEYOR'S STATEMENT

This Corner Record was prepared by me or under my direction in conformance with the Professional Land Surveyors' Act on April 19, 2008

Signed [Signature] P.L.S. or R.C.E. No. L.S. 5411



COUNTY SURVEYOR'S STATEMENT

This Corner Record was received JUL 08 2008  
examined and filed JUL 30 2008

Signed [Signature] P.L.S. or R.C.E. No. 6388

Title DEPUTY COUNTY SURVEYOR



County Surveyor's Comment \_\_\_\_\_

LA 15723