

TO PWFB 1818-459

R1: FOUND L&F RAMSET INT.C. PER
CITY BURBANK F.B. 302-35

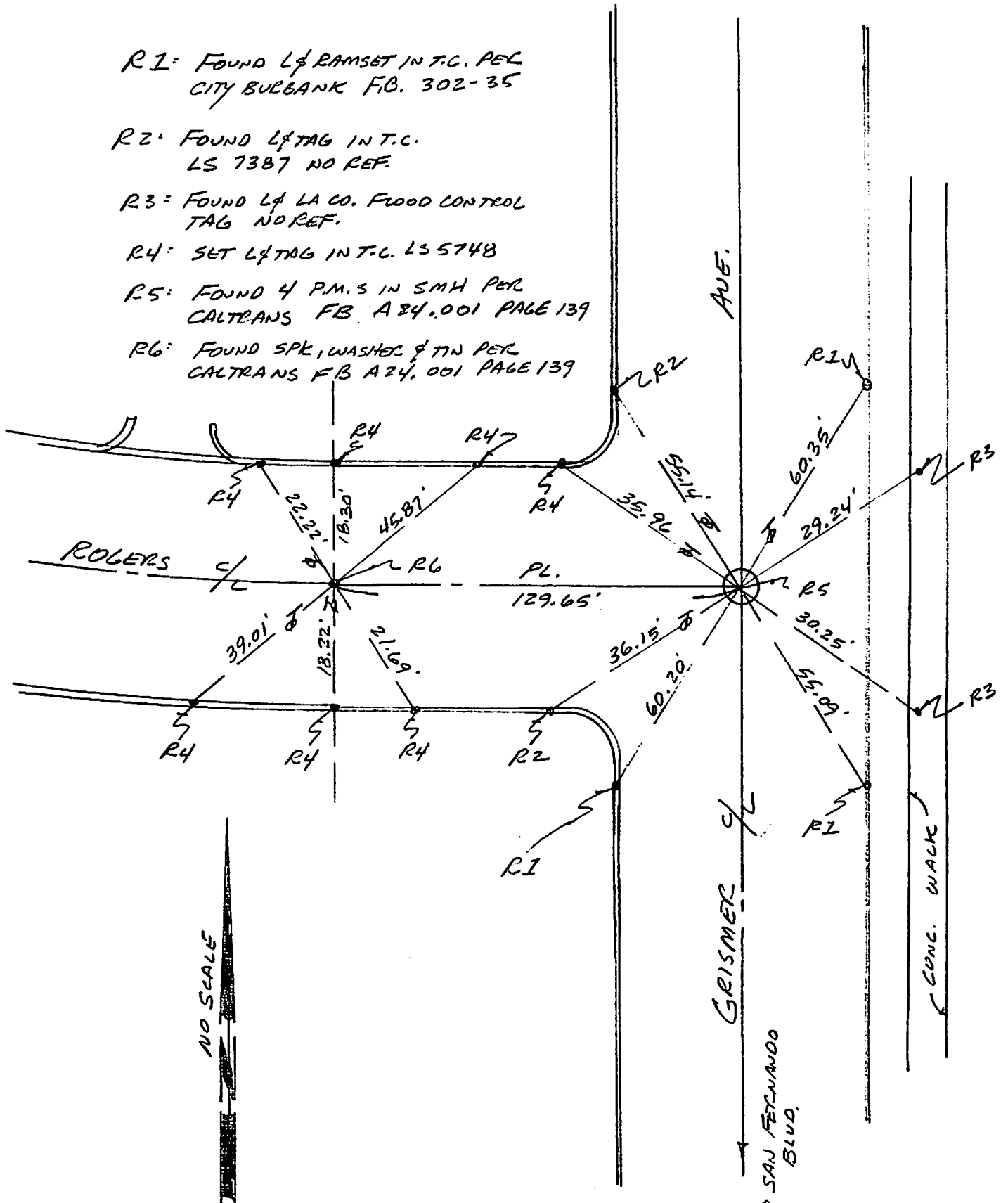
R2: FOUND L&F TAG INT.C.
LS 7387 NO REF.

R3: FOUND L&F LA CO. FLOOD CONTROL
TAG NO REF.

R4: SET L&F TAG INT.C. LS 5748

R5: FOUND 4 P.M.S IN SMH PER
CALTRANS FB A24.001 PAGE 139

R6: FOUND SPK, WASHOC & TIN PER
CALTRANS FB A24.001 PAGE 139



TG 533 F5

TO PWFB 1818-459

JN 10977

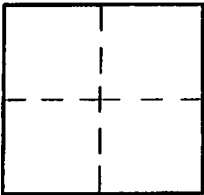
CORNER RECORD

Document Number _____

City of BURBANK

County of Los Angeles, California

Brief Legal Description _____



CORNERTYPE

Govt. Corner Control
 Meander Property
 Rancho Other
 Date of Survey July 21 2007

COORDINATES (Optional)

N. _____
 E. _____
 Zone _____ NAD27 NAD83
 NAD83 Epoch _____
 Elev. _____
 Vert. Datum: NGVD29 NAVD88
 Meas. Units: Metric Imperial

Corner - Left as found Found & tagged Established Reestablished Rebuilt

Identification and type of corner found: Evidence used to identify or procedure used to establish or reestablish the corner:

CITY BURBANK FB 302 PAGE 35
CALTRANS FB A24.001 PAGE 139
PWFB 1818 PAGE 459

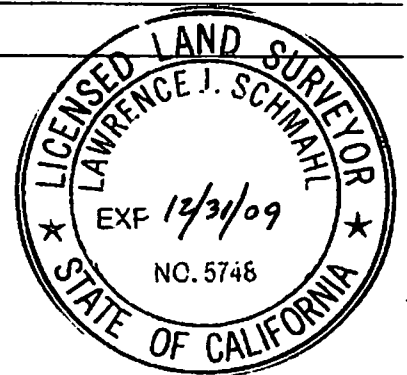
A description of the physical condition of the monument as found and as set or reset: _____

SEE PAGE 2

SURVEYOR'S STATEMENT

This Corner Record was prepared by me or under my direction in conformance
 with the Land Surveyors' Act on July 21 2007

Signed [Signature] P.L.S. or R.C.E. No. 5748



COUNTY SURVEYOR'S STATEMENT

This Corner Record was received _____

and examined and filed _____

Signed _____ P.L.S. or R.C.E. No. _____

Title: _____

County Surveyor's Comment _____