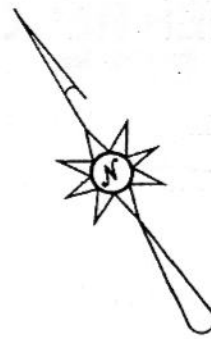
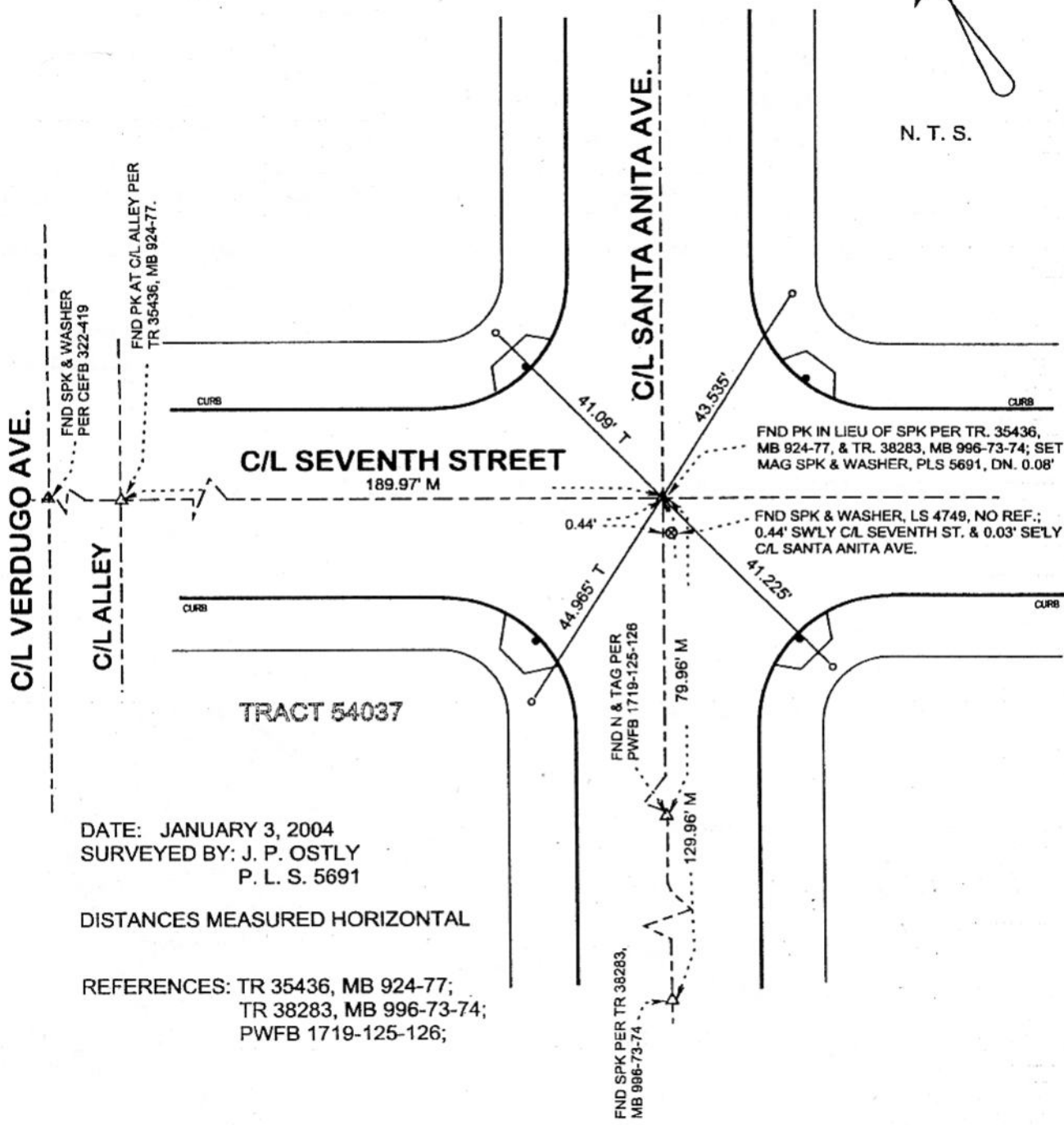


FB-336 P. 71



N. T. S.



DATE: JANUARY 3, 2004  
 SURVEYED BY: J. P. OSTLY  
 P. L. S. 5691

DISTANCES MEASURED HORIZONTAL

REFERENCES: TR 35436, MB 924-77;  
 TR 38283, MB 996-73-74;  
 PWFB 1719-125-126;

- △ FND MONUMENT AS NOTED.
- L & TAG, LS 4749 IN TC AT CCR; TAN TIE FOR FND SPK & WASHER, LS 4749.
- SET L & TAG, PLS 5691, IN WALK; TANGENT TIE; CHISELED 'T'.
- ⊗ FND SPK & WASHER, LS 4749

CORNER RECORD

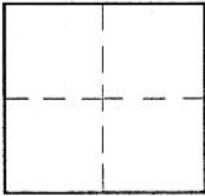
Document Number

553

City of BURBANK

County of Los Angeles, California

Brief Legal Description C/L SEVENTH ST. & SANTA ANITA AVE. - C/L MONUMENT PRESERVATION



CORNER TYPE

Govt. Corner [ ] Control [ ]
Meander [ ] Property [ ]
Rancho [ ] Other [x]
Date of Survey 3-Jan-04

COORDINATES (Optional)

N.
E.
Zone NAD27 [ ] NAD83 [ ]
NAD83 Epoch
Elev.
Vert. Datum: NGVD29 [ ] NAVD88 [ ]
Meas. Units: Metric [ ] Imperial [ ]

Corner - Left as found [ ] Found & tagged [ ] Established [x] Reestablished [ ] Rebuilt [ ]

Identification and type of corner found: Evidence used to identify or procedure used to establish or reestablish the corner: see plat;

distances measured horizontal;

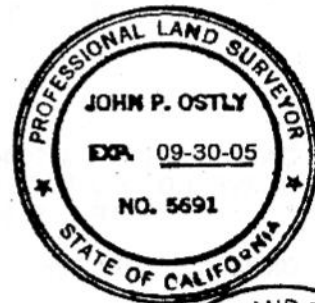
A description of the physical condition of the monument as found and as set or reset:

see plat;

SURVEYOR'S STATEMENT

This Corner Record was prepared by me or under my direction in conformance with the Land Surveyors' Act on 06-Jan-04

Signed [Signature] P.L.S. or R.C.E. No. 5691



COUNTY SURVEYOR'S STATEMENT

This Corner Record was received JAN 20 2004

and examined and filed FEB 04 2004

Signed [Signature] P.L.S. or R.C.E. No.

Title: DEPUTY COUNTY SURVEYOR



County Surveyor's Comment

File 2-2-04