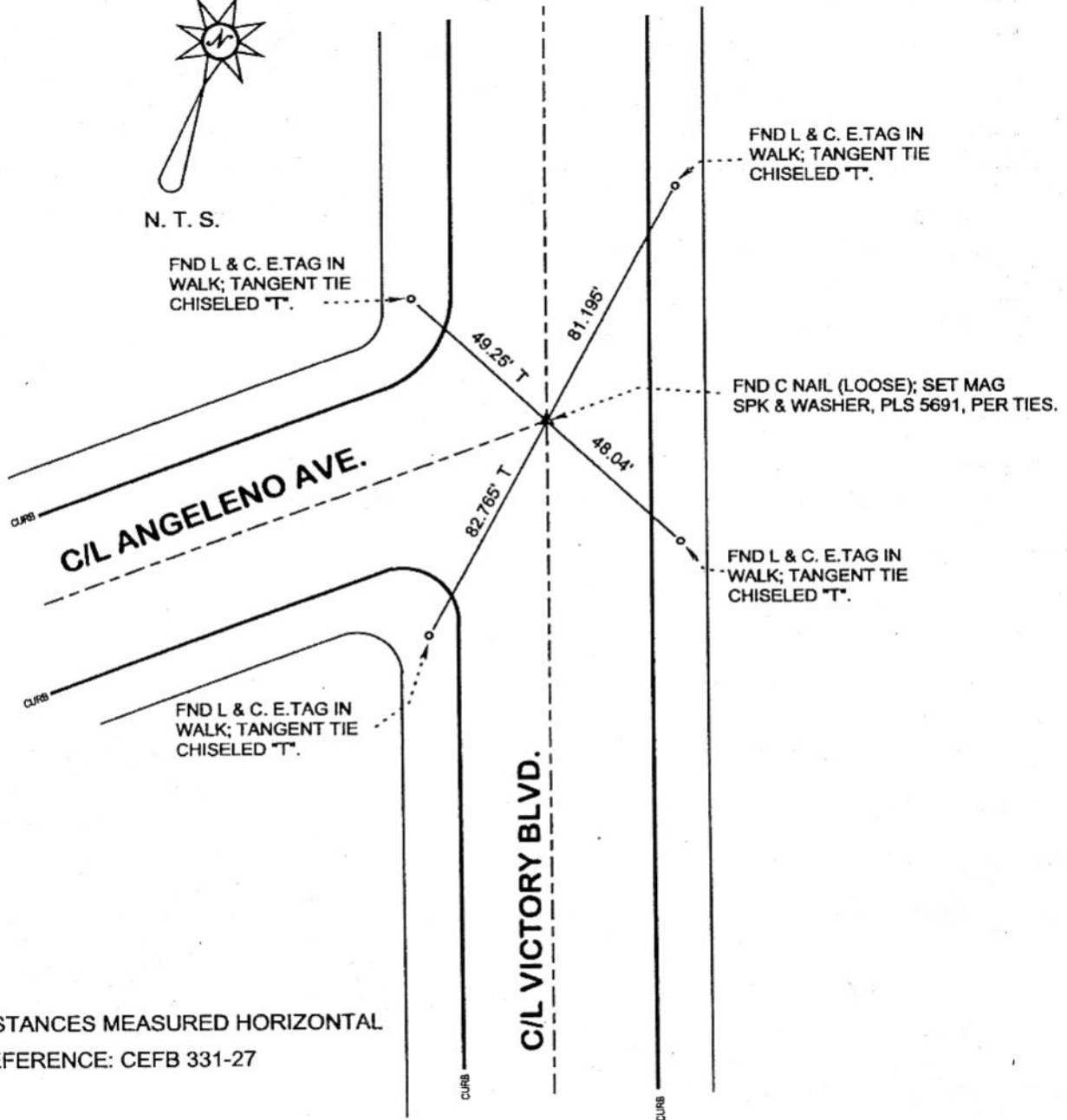


FB-336 P. 65



N. T. S.



DISTANCES MEASURED HORIZONTAL
REFERENCE: CEFB 331-27

DATE: JANUARY 16, 2004
SURVEYED BY: J. P. OSTLY
P. L. S. 5691

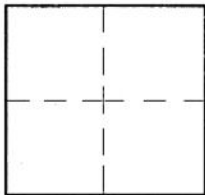
CORNER RECORD

Document Number _____

City of BURBANK

County of Los Angeles, California

Brief Legal Description C/L ANGELENO AVE. & VICTORY BLVD. - C/L MONUMENT PRESERVATION



CORNERTYPE

Govt. Corner Control
 Meander Property
 Rancho Other
 Date of Survey 16-Jan-04

COORDINATES (Optional)

N. _____
 E. _____
 Zone _____ NAD27 NAD83
 NAD83 Epoch _____
 Elev. _____
 Vert. Datum: NGVD29 NAVD88
 Meas. Units: Metric Imperial

Corner - Left as found Found & tagged Established Reestablished Rebuilt

Identification and type of corner found: Evidence used to identify or procedure used to establish or reestablish the corner:
see plat;

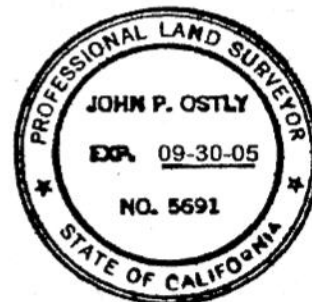
distances measured horizontal;

A description of the physical condition of the monument as found and as set or reset: _____
see plat;

SURVEYOR'S STATEMENT

This Corner Record was prepared by me or under my direction in conformance with the Land Surveyors' Act on 18-Jan-04

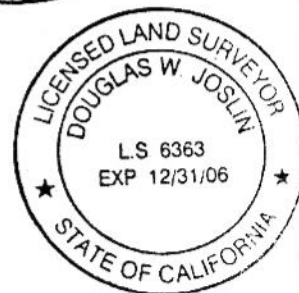
Signed [Signature] P.L.S. or R.C.E. No. 5691



COUNTY SURVEYOR'S STATEMENT

This Corner Record was received JAN 20 2004 and examined and filed FEB 04 2004

Signed [Signature] P.L.S. or R.C.E. No. _____
 Title: DEPUTY COUNTY SURVEYOR



County Surveyor's Comment _____

EMG 2-2-04