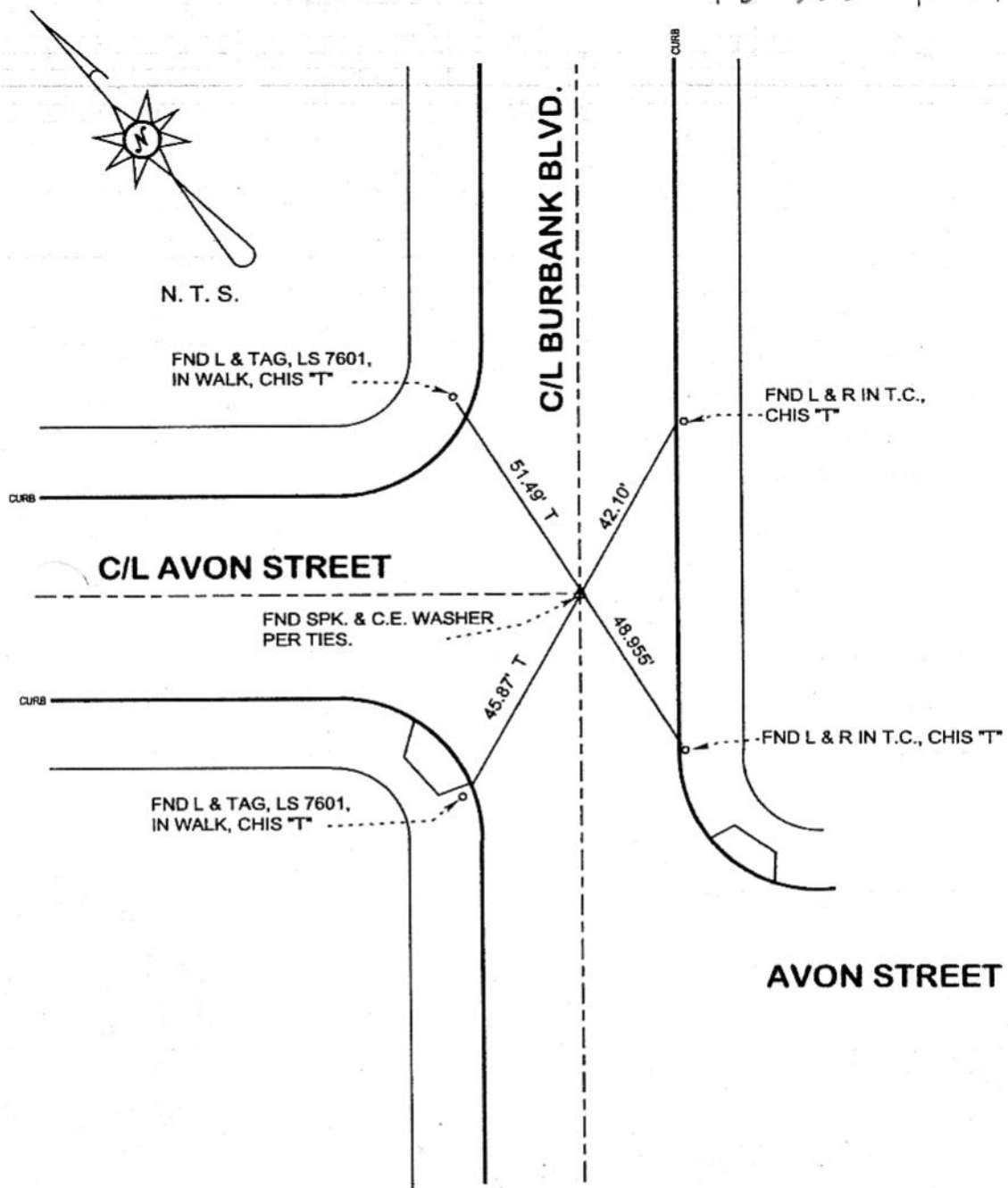


FB-336 P. 49



DISTANCES MEASURED HORIZONTAL  
 REFERENCE: CEFB 322-17

DATE: FEB. 16, 2004  
 SURVEYED BY: J. P. OSTLY  
 P. L. S. 5691

CORNER RECORD

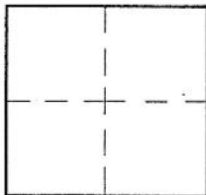
Document Number

407

City of BURBANK

County of Los Angeles, California

Brief Legal Description C/L BURBANK BLVD. & AVON ST.(NORTH) - C/L MONUMENT PRESERVATION



CORNER TYPE

Govt. Comer [ ] Control [ ]
Meander [ ] Property [ ]
Rancho [ ] Other [X]
Date of Survey 16-Feb-04

COORDINATES (Optional)

N.
E.
Zone NAD27 [ ] NAD83 [ ]
NAD83 Epoch
Elev.
Vert. Datum: NGVD29 [ ] NAVD88 [ ]
Meas. Units: Metric [ ] Imperial [ ]

Comer - Left as found [ ] Found & tagged [ ] Established [ ] Reestablished [X] Rebuilt [ ]

Identification and type of corner found: Evidence used to identify or procedure used to establish or reestablish the corner: see plat;

distances measured horizontal;

A description of the physical condition of the monument as found and as set or reset:

see plat;

SURVEYOR'S STATEMENT

This Corner Record was prepared by me or under my direction in conformance with the Land Surveyors' Act on 23-Feb-04

Signed [Signature] PLS or R.C.E. No. 5691



COUNTY SURVEYOR'S STATEMENT

This Corner Record was received FEB 26 2004

and examined and filed MAR 15 2004

Signed [Signature] P.L.S. or R.C.E. No.

Title: DEPUTY COUNTY SURVEYOR

County Surveyor's Comment



MAR 10 2004 TH