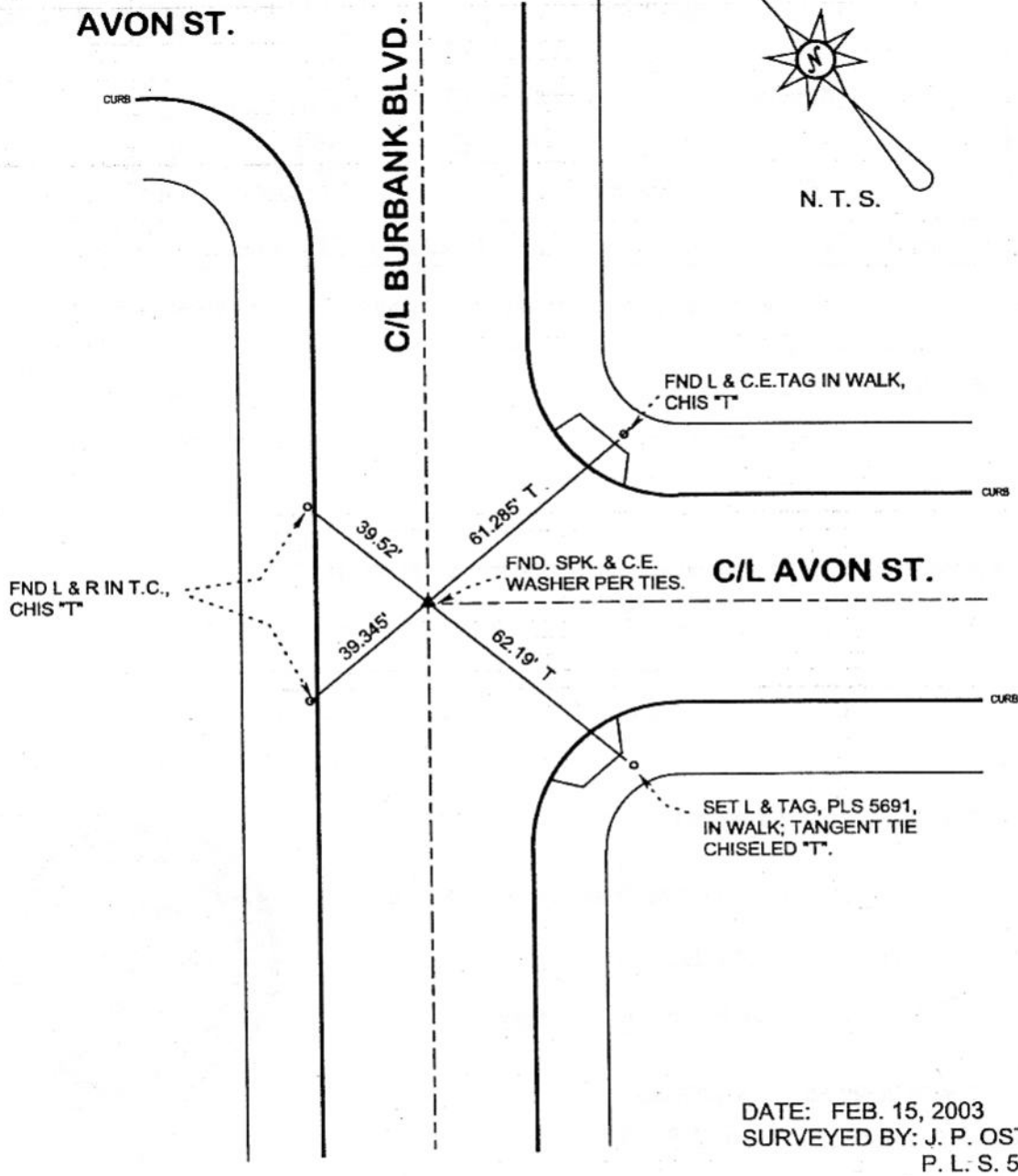


FB-336 P.47



DISTANCES MEASURED HORIZONTAL  
REFERENCE: CEFB 322-17

DATE: FEB. 15, 2003  
SURVEYED BY: J. P. OSTLY  
P. L. S. 5691

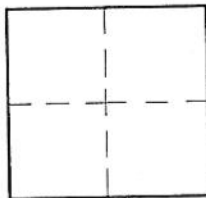
# CORNER RECORD

Document Number \_\_\_\_\_

City of BURBANK

County of Los Angeles, California

Brief Legal Description C/L BURBANK BLVD. & AVON ST.(SOUTH) - C/L MONUMENT PRESERVATION



### CORNERTYPE

Govt. Corner  Control   
 Meander  Property   
 Rancho  Other   
 Date of Survey 15-Feb-04

### COORDINATES (Optional)

N. \_\_\_\_\_  
 E. \_\_\_\_\_  
 Zone \_\_\_\_\_ NAD27  NAD83   
 NAD83 Epoch \_\_\_\_\_  
 Elev. \_\_\_\_\_  
 Vert. Datum: NGVD29  NAVD88   
 Meas. Units: Metric  Imperial

Corner - Left as found  Found & tagged  Established  Reestablished  Rebuilt

Identification and type of corner found: Evidence used to identify or procedure used to establish or reestablish the corner:

see plat;

distances measured horizontal;

A description of the physical condition of the monument as found and as set or reset:

see plat;

### SURVEYOR'S STATEMENT

This Corner Record was prepared by me or under my direction in conformance

with the Land Surveyors' Act on 23-Feb-04

Signed John Ostly P.L.S. or R.C.E. No. 5691



### COUNTY SURVEYOR'S STATEMENT

This Corner Record was received FEB 26 2004

and examined and filed MAR 15 2004

Signed Douglas W. Joslin P.L.S. or R.C.E. No. \_\_\_\_\_

Title: DEPUTY COUNTY SURVEYOR



County Surveyor's Comment \_\_\_\_\_

MAR 10 2004 TH