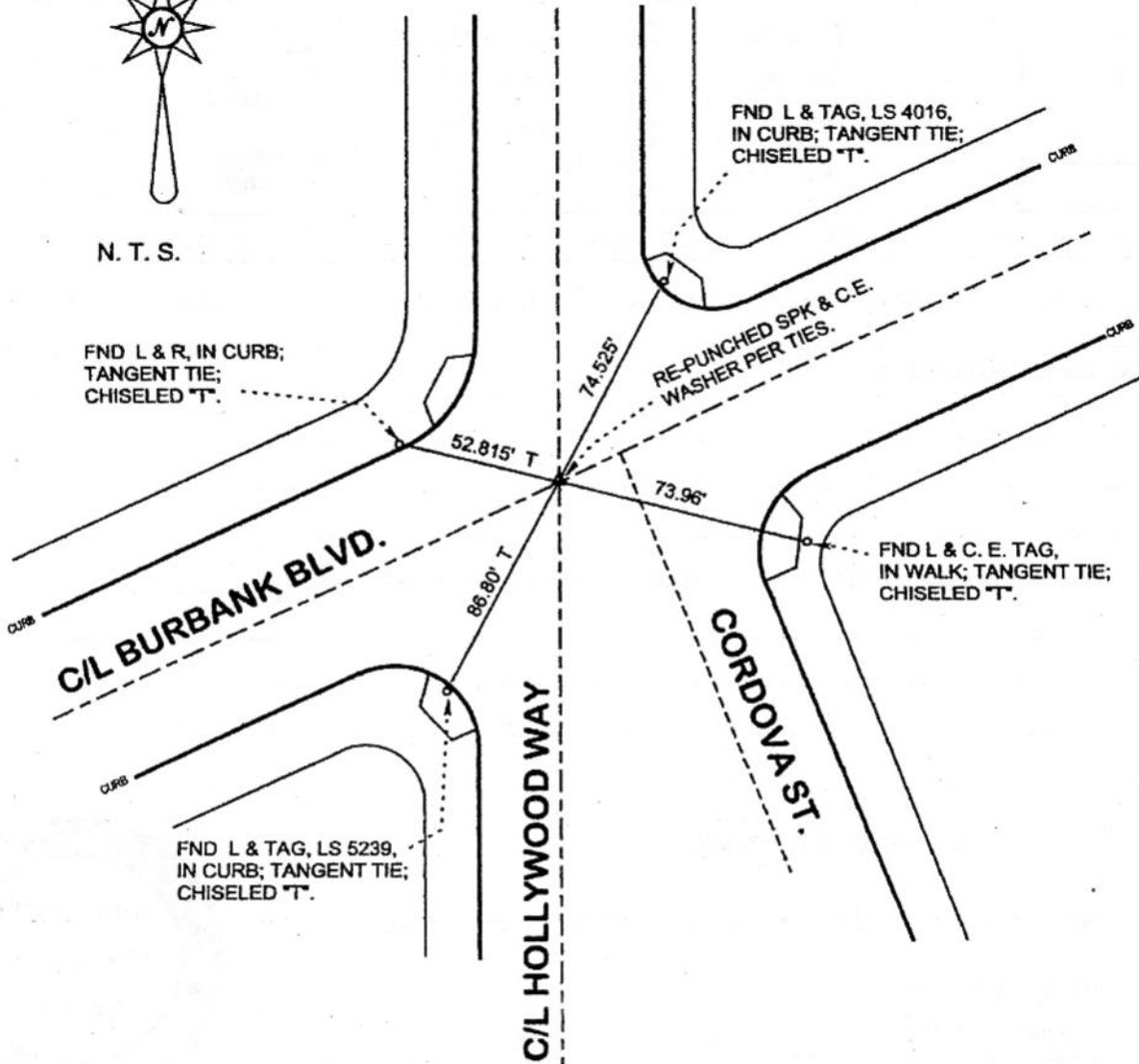


FB-336 P. 45



N. T. S.



DISTANCES MEASURED HORIZONTAL

REFERENCE: CEFB 322-471

DATE: MARCH 21, 2004
SURVEYED BY: J. P. OSTLY
P. L. S. 5691

TIES-FILED AS SUBMITTED

PWFB 1718

CORNER RECORD

BURBANK

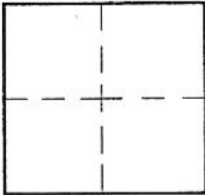
Document Number

421

City of

County of Los Angeles, California

Brief Legal Description C/L HOLLYWOOD WAY & BURBANK BLVD. - C/L MONUMENT PRESERVATION



CORNER TYPE

Govt. Corner Control
 Meander Property
 Rancho Other
 Date of Survey 21-Mar-04

COORDINATES (Optional)

N. _____
 E. _____
 Zone _____ NAD27 NAD83
 NAD83 Epoch _____
 Elev. _____
 Vert. Datum: NGVD29 NAVD88
 Meas. Units: Metric Imperial

Corner - Left as found Found & tagged Established Reestablished Rebuilt

Identification and type of corner found: Evidence used to identify or procedure used to establish or reestablish the corner:
see plat;

distances measured horizontal;

A description of the physical condition of the monument as found and as set or reset:
see plat;

SURVEYOR'S STATEMENT

This Corner Record was prepared by me or under my direction in conformance with the Land Surveyors' Act on 21-Mar-04

Signed *John P. Ostly* P.L.S. or R.C.E. No. 5691



COUNTY SURVEYOR'S STATEMENT

This Corner Record was received APR 15 2004 and examined and filed MAY 05 2004

Signed *Douglas W. Joslin* P.L.S. or R.C.E. No. _____

Title: DEPUTY COUNTY SURVEYOR

County Surveyor's Comment _____



CH