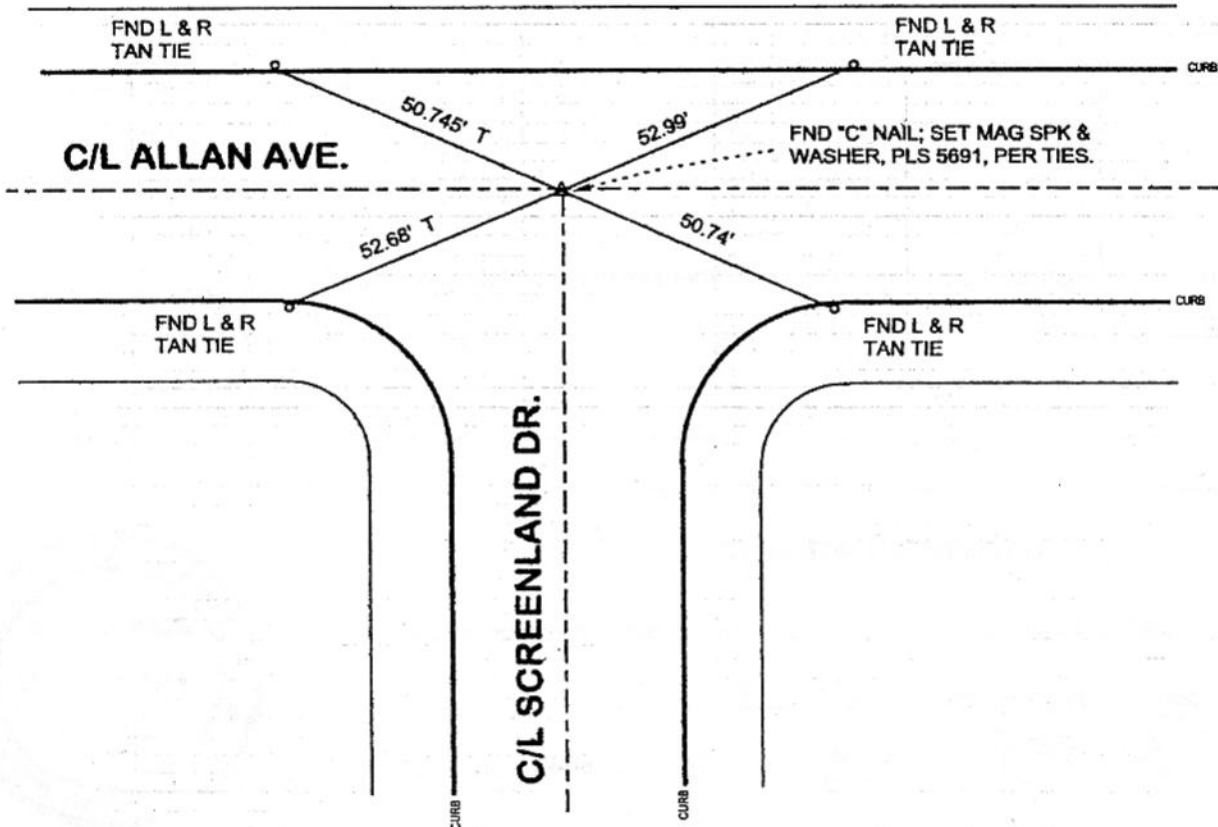


FB-336 P. 41



N. T. S.



DISTANCES MEASURED HORIZONTAL

REFERENCE: CEFB: 187-110

DATE: MARCH 8, 2004  
SURVEYED BY: J. P. OSTLY  
P. L. S. 5691

**TIES-FILED AS SUBMITTED**

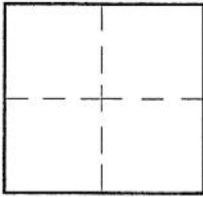
# CORNER RECORD

Document Number 423

City of BURBANK

County of Los Angeles, California

Brief Legal Description C/L ALLAN AVE. & SCREENLAND DR.. - C/L MONUMENT PRESERVATION



### CORNER TYPE

Govt. Comer  Control   
 Meander  Property   
 Rancho  Other   
 Date of Survey 8-Mar-04

### COORDINATES (Optional)

N. \_\_\_\_\_  
 E. \_\_\_\_\_  
 Zone \_\_\_\_\_ NAD27  NAD83   
 NAD83 Epoch \_\_\_\_\_  
 Elev. \_\_\_\_\_  
 Vert. Datum: NGVD29  NAVD88   
 Meas. Units: Metric  Imperial

Corner - Left as found  Found & tagged  Established  Reestablished  Rebuilt

Identification and type of corner found: Evidence used to identify or procedure used to establish or reestablish the corner:  
see plat;

distances measured horizontal;

A description of the physical condition of the monument as found and as set or reset: \_\_\_\_\_

see plat;

### SURVEYOR'S STATEMENT

This Corner Record was prepared by me or under my direction in conformance with the Land Surveyors' Act on 22-Mar-04

Signed *John P. Ostly* P.L.S. or R.C.E. No. 5691



### COUNTY SURVEYOR'S STATEMENT

This Corner Record was received APR 15 2004

and examined and filed MAY 05 2004

Signed *Douglas W. Joslin* P.L.S. or R.C.E. No. \_\_\_\_\_

Title: DEPUTY COUNTY SURVEYOR

County Surveyor's Comment \_\_\_\_\_



**TIES-FILED AS SUBMITTED**

*CH*