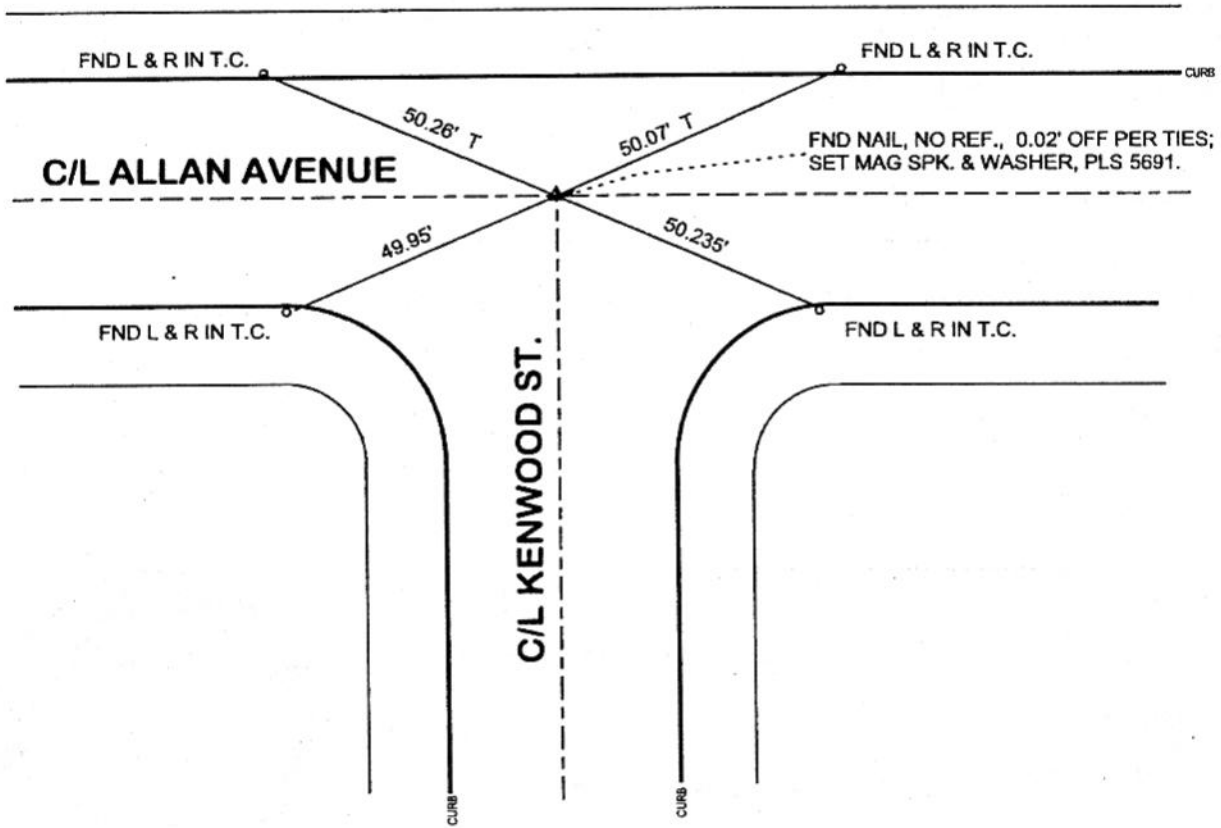


FB-336 P. 39



N. T. S.



DISTANCES MEASURED HORIZONTAL

REFERENCE: CEFB 187-110

DATE: JANUARY 27, 2004
SURVEYED BY: J. P. OSTLY
P. L. S. 5691

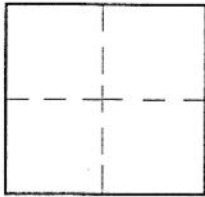
CORNER RECORD

Document Number **403**

City of **BURBANK**

County of Los Angeles, California

Brief Legal Description **C/L ALLAN AVE. & KENWOOD ST. - C/L MONUMENT PRESERVATION**



CORNERTYPE

Govt. Corner Control
 Meander Property
 Rancho Other
 Date of Survey **27-Jan-04**

COORDINATES (Optional)

N. _____
 E. _____
 Zone _____ NAD27 NAD83
 NAD83 Epoch _____
 Elev. _____
 Vert. Datum: NGVD29 NAVD88
 Meas. Units: Metric Imperial

Corner - Left as found Found & tagged Established Reestablished Rebuilt

Identification and type of corner found: Evidence used to identify or procedure used to establish or reestablish the corner:
see plat;

distances measured horizontal;

A description of the physical condition of the monument as found and as set or reset: _____

see plat;

SURVEYOR'S STATEMENT

This Corner Record was prepared by me or under my direction in conformance
 with the Land Surveyors' Act on **24-Feb-04**

Signed *John P. Ostly* P.L.S. or R.C.E. No. **5691**



COUNTY SURVEYOR'S STATEMENT

This Corner Record was received **FEB 26 2004**

and examined and filed **MAR 15 2004**

Signed *Douglas W. Joslin* P.L.S. or R.C.E. No. _____
DEPUTY COUNTY SURVEYOR
 Title: _____



County Surveyor's Comment _____

MAR 10 2004 *TJ*