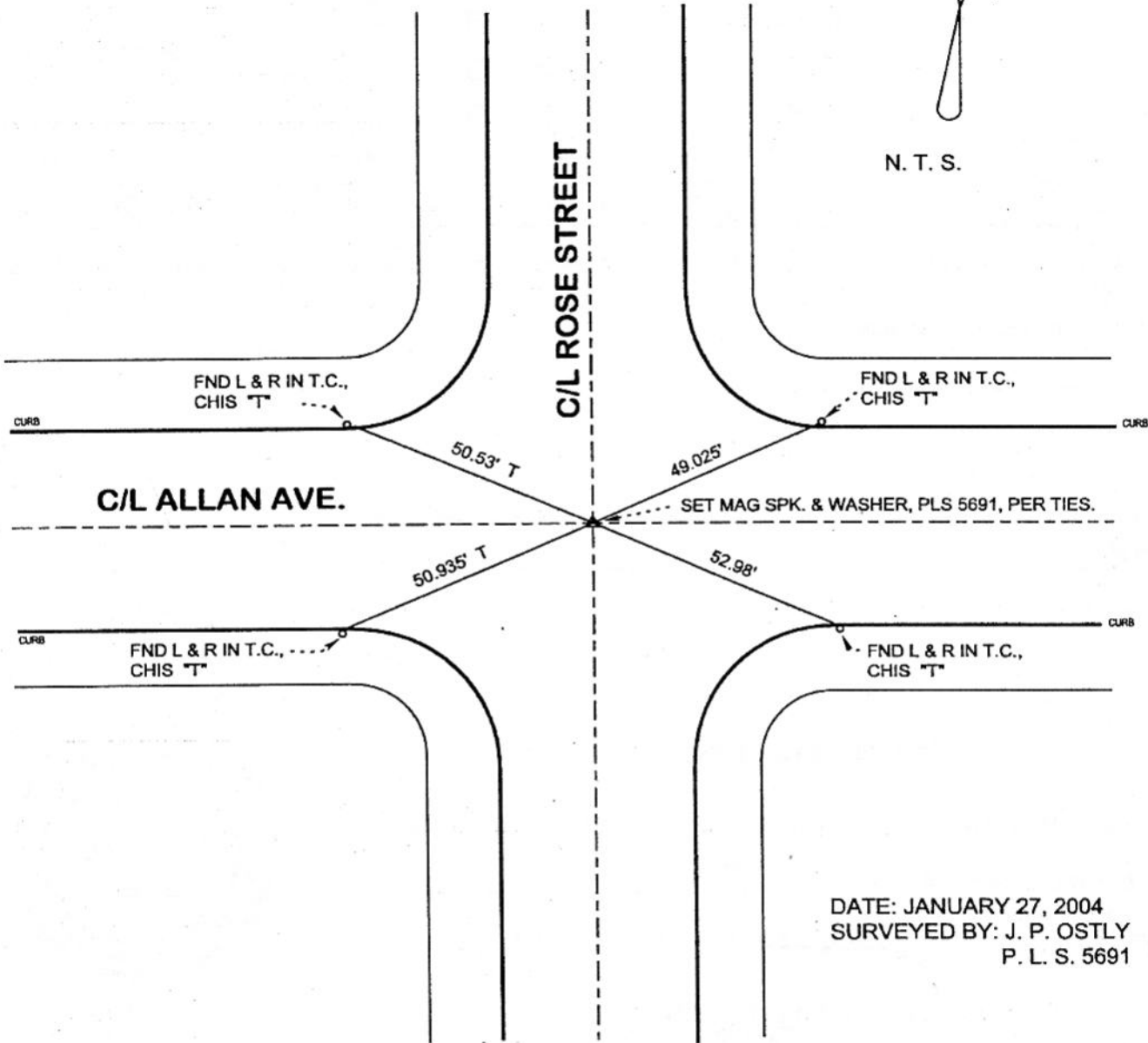


FB-336 P.35



N. T. S.



DATE: JANUARY 27, 2004
SURVEYED BY: J. P. OSTLY
P. L. S. 5691

DISTANCES MEASURED HORIZONTAL
REFERENCE: CEFB 187-121

CORNER RECORD

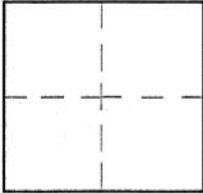
Document Number

182

City of BURBANK

County of Los Angeles, California

Brief Legal Description C/L ALLAN AVE. & ROSE ST. - C/L MONUMENT PRESERVATION



CORNERTYPE

Govt. Corner [] Control []
Meander [] Property []
Rancho [] Other [x]
Date of Survey 27-Jan-04

COORDINATES (Optional)

N.
E.
Zone NAD27 [] NAD83 []
NAD83 Epoch
Elev.
Vert. Datum: NGVD29 [] NAVD88 []
Meas. Units: Metric [] Imperial []

Corner - Left as found [] Found & tagged [] Established [] Reestablished [x] Rebuilt []

Identification and type of corner found: Evidence used to identify or procedure used to establish or reestablish the corner: see plat;

distances measured horizontal;

A description of the physical condition of the monument as found and as set or reset:

see plat;

SURVEYOR'S STATEMENT

This Corner Record was prepared by me or under my direction in conformance with the Land Surveyors' Act on 24-Feb-04

Signed [Signature] P.L.S. or R.C.E. No. 5691



COUNTY SURVEYOR'S STATEMENT

This Corner Record was received FEB 26 2004 and examined and filed MAR 15 2004

Signed [Signature] P.L.S. or R.C.E. No.
Title: DEPUTY COUNTY SURVEYOR



County Surveyor's Comment

MAR 10 2004 TH