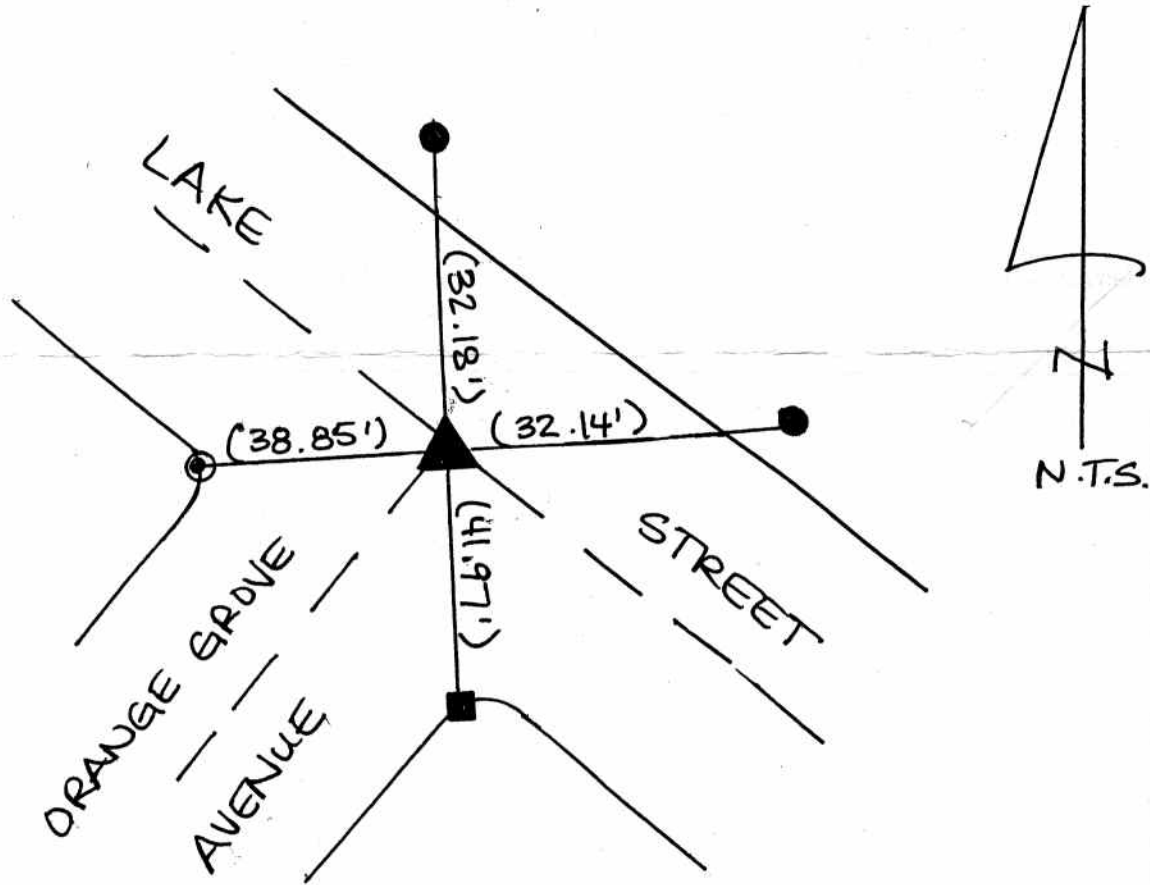


R-1=CITY OF BURBANK & TIE SHEET 322
 () = REC. & MEAS. DIST. PER R-1.



- ▲ FD. NOTHING. SET SPK/W L.S. 5411 FLUSH PER TIES ON R-1.
- FD. L & C.E TAG IN SIDEWALK (PER R-1).
- ⊙ FD. L & C.E TAG IN RAMP (PER R-1).
- FD. L & C.E TAG IN TOP OF CURB. (PER R-1).

The purpose of this record is to document the perpetuation of found monument(s) pursuant to the PLS Act Section 8771. No claim is made regarding the correctness of the position(s) of said monument(s), nor the dimensional relationship to street centerlines or property boundaries.

06-CHA-324

CORNER RECORD

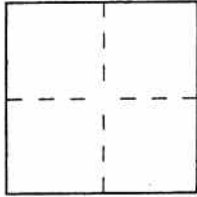
PWFB 1719 Document Number

692

City of Burbank County of Los Angeles, California

Brief Legal Description Orange Grove Avenue & Lake Street

CORNER TYPE



Government Corner [] Control []
Meander [] Property []
Rancho [] Other [x]
Date of Survey 3/27/06

COORDINATES (Optional)

N.
E.
Zone NAD27 [] NAD83 []
NAD83 Epoch
Elev.
Vert. Datum: NGVD29 [] NAVD88 []
Meas. Units: Metric [] Imperial []
U.S. Survey foot []

LA13914

Corner Left as found [] Found and tagged [] Established [] Reestablished [x] Rebuilt []

Identification and type of corner found; Evidence used to identify or procedure used to establish or reestablish the corner:

Found as described on the reverse of this sheet.

A description of the physical condition of the monument as found and as set or reset:

See Page 2

SURVEYOR'S STATEMENT

This Corner Record was prepared by me or under my direction in conformance with the Land Surveyor's Act on June 25, 2006

Signed [Signature] L.S. or R.C.E. No. L.S. 5411



COUNTY SURVEYOR'S STATEMENT

This Corner Record was received JUL 19 2006 and examined and filed AUG 01 2006

Signed [Signature] L.S. or R.C.E. No. 6388
Title DEPUTY COUNTY SURVEYOR



County Surveyor's Comment

JML 7-25-06