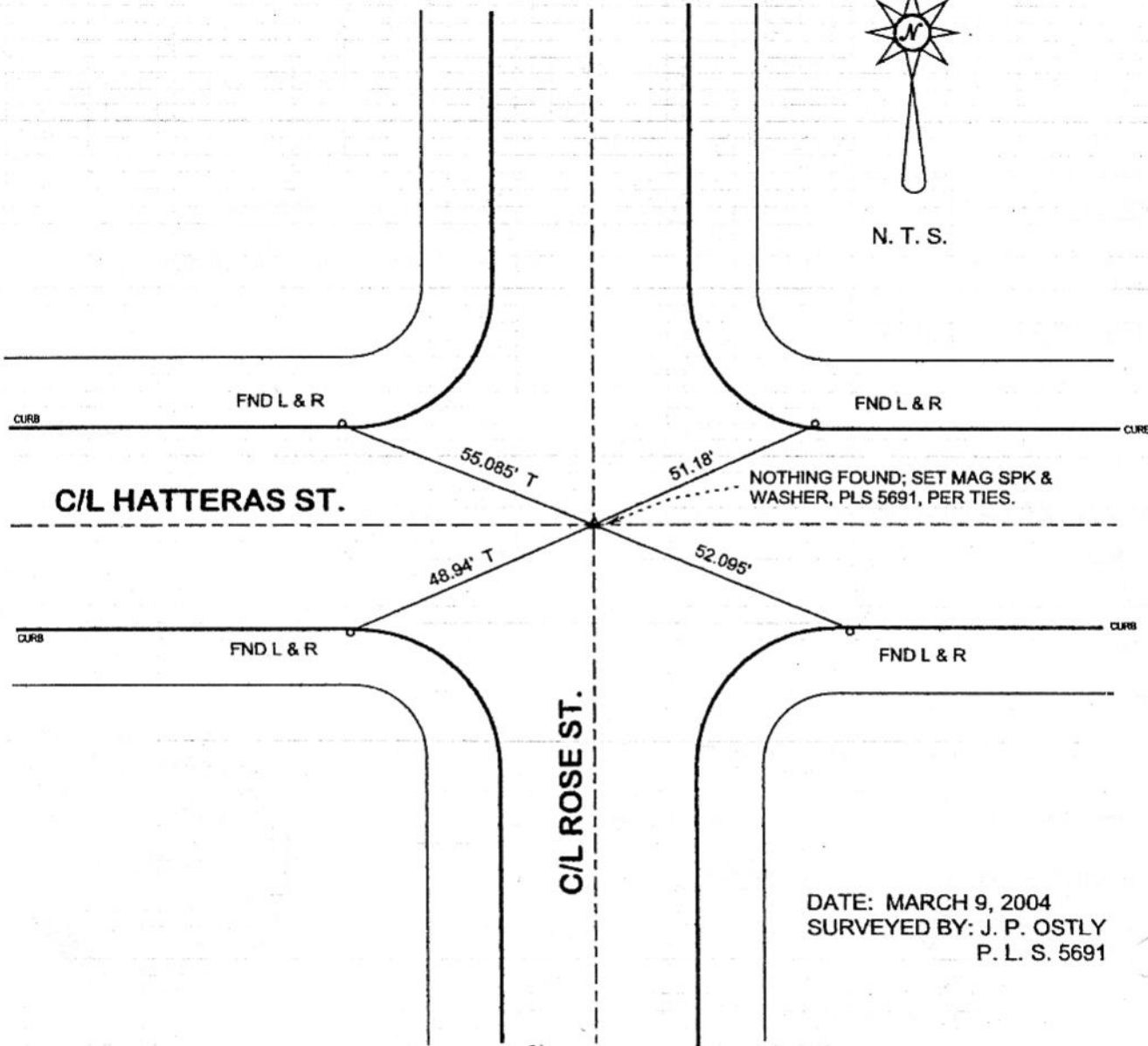


FB-336 P.31



N. T. S.



DISTANCES MEASURED HORIZONTAL  
REFERENCE: CEFB 187-125

DATE: MARCH 9, 2004  
SURVEYED BY: J. P. OSTLY  
P. L. S. 5691

TIES-FILED AS SUBMITTED

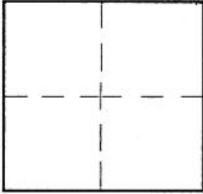
CORNER RECORD

Document Number 186

City of BURBANK

County of Los Angeles, California

Brief Legal Description C/L HATTERAS ST. & ROSE ST. - C/L MONUMENT PRESERVATION



CORNERTYPE

Govt. Corner  Control   
Meander  Property   
Rancho  Other   
Date of Survey 9-Mar-04

COORDINATES (Optional)

N. \_\_\_\_\_  
E. \_\_\_\_\_  
Zone \_\_\_\_\_ NAD27  NAD83   
NAD83 Epoch \_\_\_\_\_  
Elev. \_\_\_\_\_  
Vert. Datum: NGVD29  NAVD88   
Meas. Units: Metric  Imperial

Corner - Left as found  Found & tagged  Established  Reestablished  Rebuilt

Identification and type of corner found: Evidence used to identify or procedure used to establish or reestablish the corner:  
see plat;

distances measured horizontal;

A description of the physical condition of the monument as found and as set or reset:

see plat;

SURVEYOR'S STATEMENT

This Corner Record was prepared by me or under my direction in conformance with the Land Surveyors' Act on 22-Mar-04

Signed [Signature] P.L.S. or R.C.E. No. 5691



COUNTY SURVEYOR'S STATEMENT

This Corner Record was received APR 15 2004

and examined and filed MAY 05 2004

Signed [Signature] P.L.S. or R.C.E. No. \_\_\_\_\_

Title: DEPUTY COUNTY SURVEYOR



County Surveyor's Comment \_\_\_\_\_

**TIES-FILED AS SUBMITTED**

CH