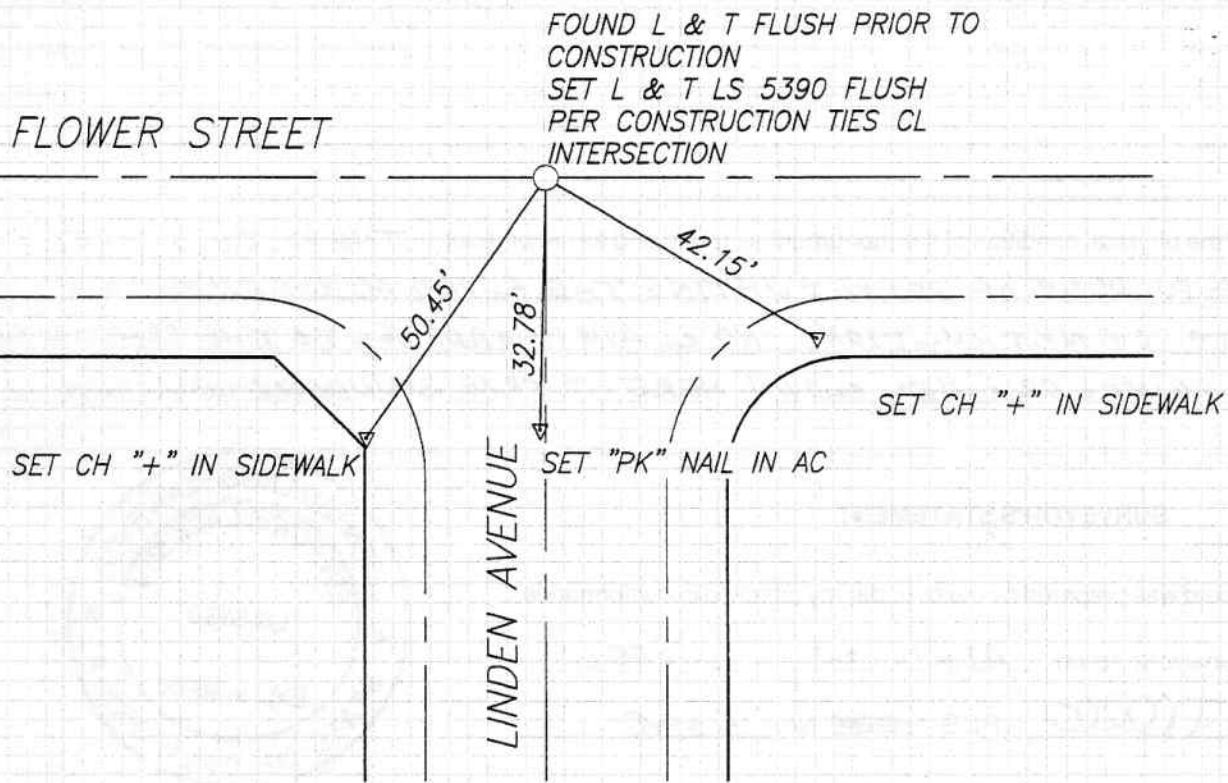


FB 336 P.248



NO SCALE

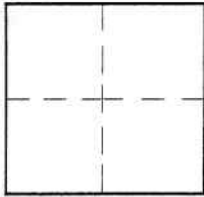
CORNER RECORD

Document Number _____

City of BURBANK

County of Los Angeles, California

Brief Legal Description FLOWER STREET & LINDEN AVENUE



CORNERTYPE

Govt. Corner Control
 Meander Property
 Rancho Other
 Date of Survey 4-6-06

COORDINATES (Optional)

N. _____
 E. _____
 Zone _____ NAD27 NAD83
 NAD83 Epoch _____
 Elev. _____
 Vert. Datum: NGVD29 NAVD88
 Meas. Units: Metric Imperial

Corner - Left as found Found & tagged Established Reestablished Rebuilt

Identification and type of corner found: Evidence used to identify or procedure used to establish or reestablish the corner:
SEE REVERSE

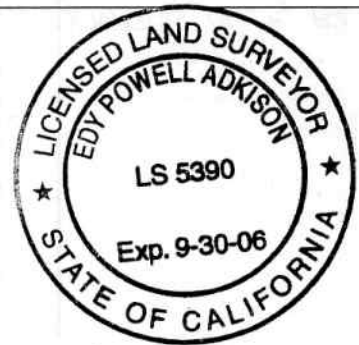
A description of the physical condition of the monument as found and as set or reset: THESE TIES ARE FOR THE PURPOSE OF PERPETUATING THE FOUND MONUMENTATION PRIOR TO CONSTRUCTION, NO CLAIM IS MADE AS TO THE RELATIONSHIP OF THE POINTS OR LINES SHOWN HERE TO TRUE BOUNDARY LOCATION.

SURVEYOR'S STATEMENT

This Corner Record was prepared by me or under my direction in conformance

with the Land Surveyors' Act on APRIL 20 2006

Signed [Signature] P.L.S. or R.C.E. No. 5390



COUNTY SURVEYOR'S STATEMENT

This Corner Record was received _____

and examined and filed _____

Signed _____ P.L.S. or R.C.E. No. _____

Title: _____

County Surveyor's Comment _____