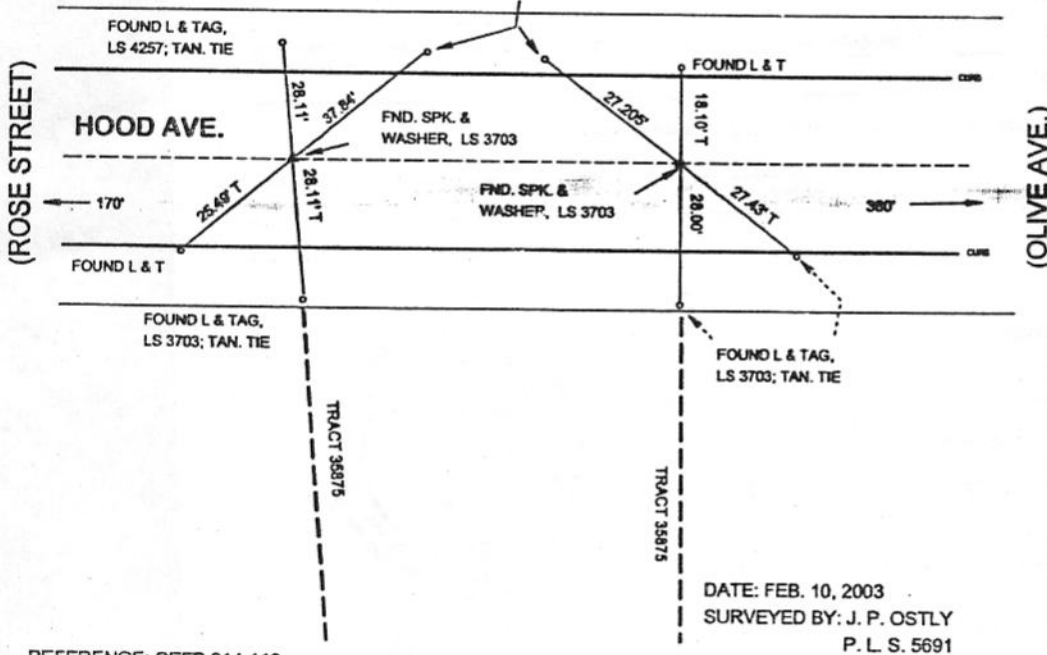


FB-336 P. 19



N. T. S.

SET L & TAG, PLS 5691,
IN WALK; CHISELED "T";
TANGENT TIE.



REFERENCE: CEFB 314-113

DATE: FEB. 10, 2003
SURVEYED BY: J. P. OSTLY
P. L. S. 5691

PWFB 1618

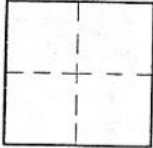
CORNER RECORD

Document Number 161 A

City of BURBANK

County of Los Angeles, California

Brief Legal Description HOOD AVE. BET. ROSE ST. & OLIVE AVE. - C/L MONUMENT PRESERVATION



CORNER TYPE

Govt. Corner Control
 Meander Property
 Rancho Other
 Date of Survey 10-Feb-03

COORDINATES (Optional)

N. _____
 E. _____
 Zone _____ NAD27 NAD83
 NAD83 Epoch _____
 Elev. _____
 Vert. Datum: NGVD29 NAVD83
 Meas. Units: Metric Imperial

Corner - Left as found Found & tagged Established Reestablished Rebuilt

Identification and type of corner found: Evidence used to identify or procedure used to establish or reestablish the corner:
see plat

distances measured horizontal;

REF PWFB 1618-161; CHANGED REFERENCE F.B; ADDED DISTANCES TO STREETS WEST & EAST.

A description of the physical condition of the monument as found and as set or reset:

see plat

SURVEYOR'S STATEMENT

This Corner Record was prepared by me or under my direction in conformance

with the Land Surveyors' Act on June 6, 2003

Signed John P. Ostly P.L.S. or R.C.E. No. 5691



COUNTY SURVEYOR'S STATEMENT

This Corner Record was received JUN 16 2003

and examined and filed JUN 26 2003

Signed Douglas W. Joslin P.L.S. or R.C.E. No. _____

Title: DEPUTY COUNTY SURVEYOR



County Surveyor's Comment JUN 24 2003 TH