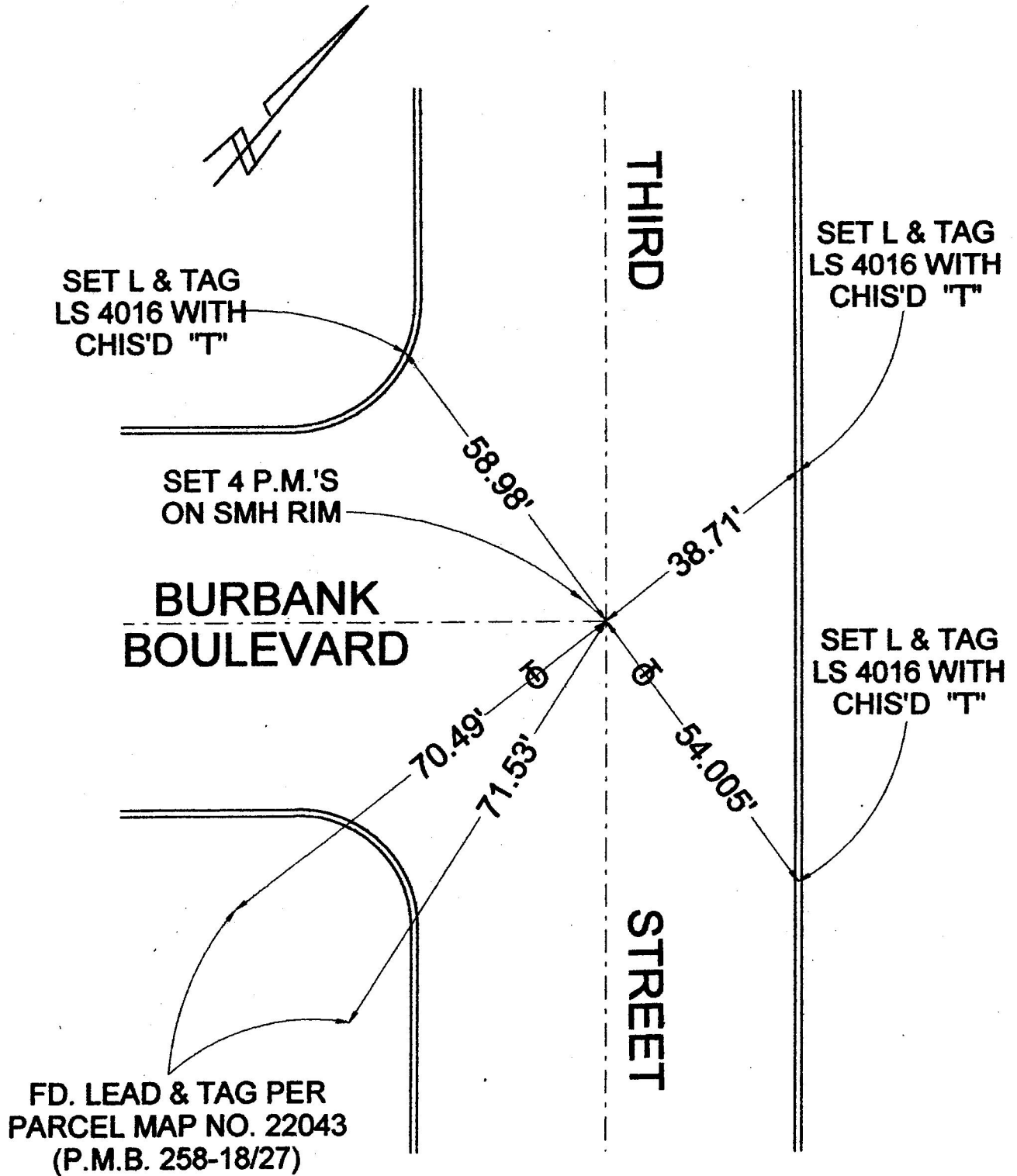


FB336 P.179



CORNER RECORD

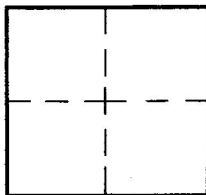
Document Number

353

City of BURBANK

County of Los Angeles, California

Brief Legal Description THIRD STREET & BURBANK BOULEVARD



CORNERTYPE

Govt. Corner Control
 Meander Property
 Rancho Other
 Date of Survey 6-30-05

COORDINATES (Optional)

N. _____
 E. _____
 Zone _____ NAD27 NAD83
 NAD83 Epoch _____
 Elev. _____
 Vert. Datum: NGVD29 NAVD88
 Meas. Units: Metric Imperial

Corner - Left as found Found & tagged Established Reestablished Rebuilt

Identification and type of corner found: Evidence used to identify or procedure used to establish or reestablish the corner:

SEE PLAT

A description of the physical condition of the monument as found and as set or reset:

SEE PLAT TIES SHOWN HEREON ARE FOR
THE PERPETUATION OF MONUMENTS SET BY ME
ON RECORD OF SURVEY, BOOK 195 PAGE 85.

SURVEYOR'S STATEMENT

This Corner Record was prepared by me or under my direction in conformance with the Land Surveyors' Act on AUGUST 08, 2005

Signed David L. Lindell P.L.S. or R.C.E. No. LS 4016



COUNTY SURVEYOR'S STATEMENT

This Corner Record was received NOV 02 2005 and examined and filed NOV 16 2005

Signed Curt M. O'Bryan P.L.S. or R.C.E. No. 6388

Title: DEPUTY COUNTY SURVEYOR



County Surveyor's Comment _____

SMB 11-9-05