

FB 336 P. 151

SET L & TAG
LS 4016 WITH
CHIS'D 'T'

SET L & TAG
LS 4016 WITH
CHIS'D 'T'

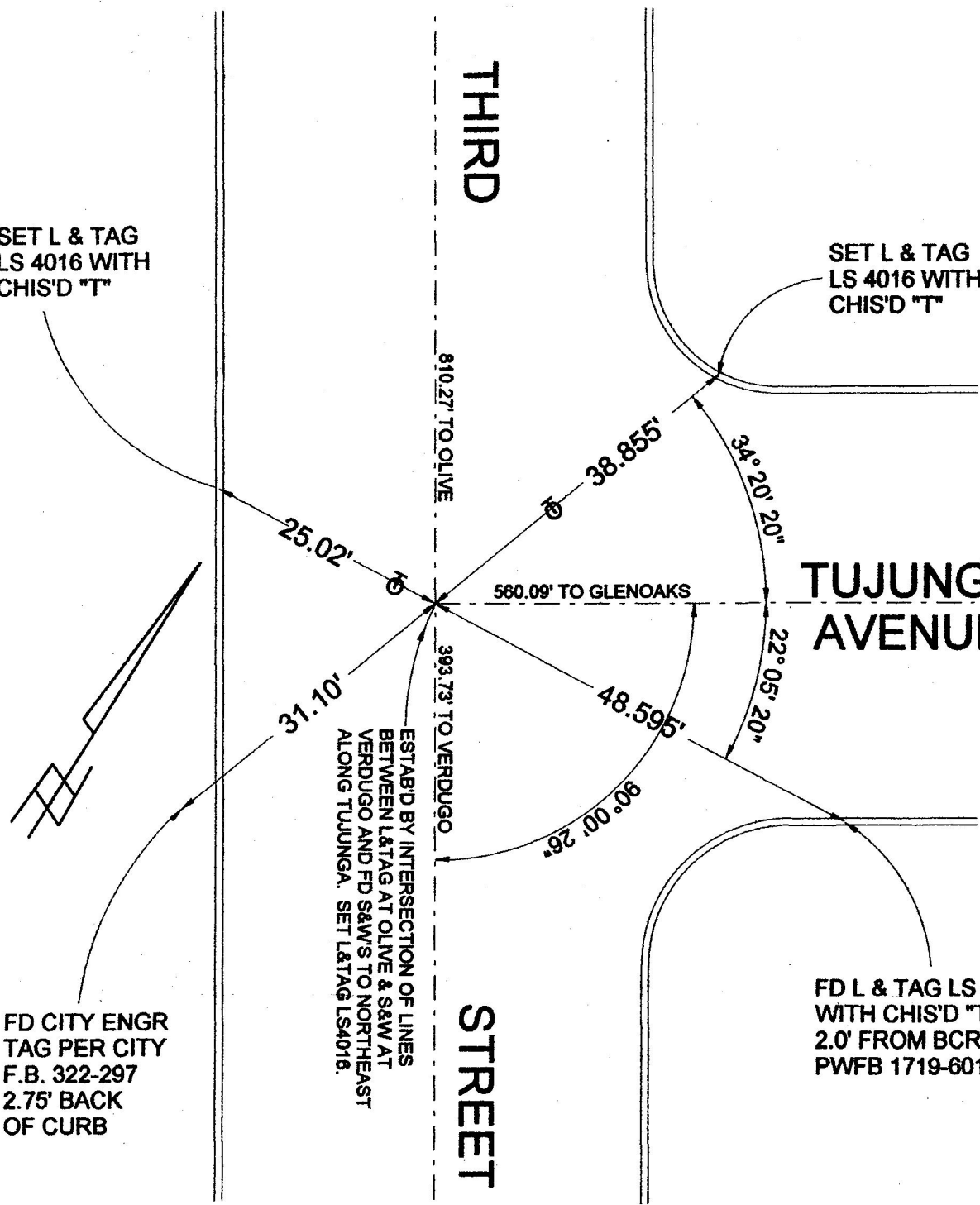
THIRD

TUJUNGA
AVENUE

STREET

FD CITY ENGR
TAG PER CITY
F.B. 322-297
2.75' BACK
OF CURB

FD L & TAG LS 4016
WITH CHIS'D 'T'
2.0' FROM BCR PER
PWFB 1719-601



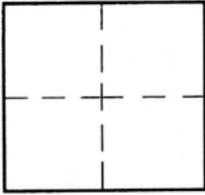
CORNER RECORD

Document Number 622

City of BURBANK

County of Los Angeles, California

Brief Legal Description THIRD STREET & TUJUNGA AVENUE



CORNERTYPE

Govt. Corner Control
 Meander Property
 Rancho Other
 Date of Survey 8-31-05

COORDINATES (Optional)

N. _____
 E. _____
 Zone _____ NAD27 NAD83
 NAD83 Epoch _____
 Elev. _____
 Vert. Datum: NGVD29 NAVD88
 Meas. Units: Metric Imperial

Corner - Left as found Found & tagged Established Reestablished Rebuilt

Identification and type of corner found: Evidence used to identify or procedure used to establish or reestablish the corner:

SEE PLAT

A description of the physical condition of the monument as found and as set or reset:

SEE PLAT

SURVEYOR'S STATEMENT

This Corner Record was prepared by me or under my direction in conformance
 with the Land Surveyors' Act on SEPTEMBER 2, 2005

Signed David L. Lindell P.L.S. or R.C.E. No. LS 4016



COUNTY SURVEYOR'S STATEMENT

This Corner Record was received SEP 07 2005

and examined and filed SEP 21 2005

Signed Curt M. O'Bryan P.L.S. or R.C.E. No. 6388

Title: DEPUTY COUNTY SURVEYOR

County Surveyor's Comment _____



Emg 9-20-5