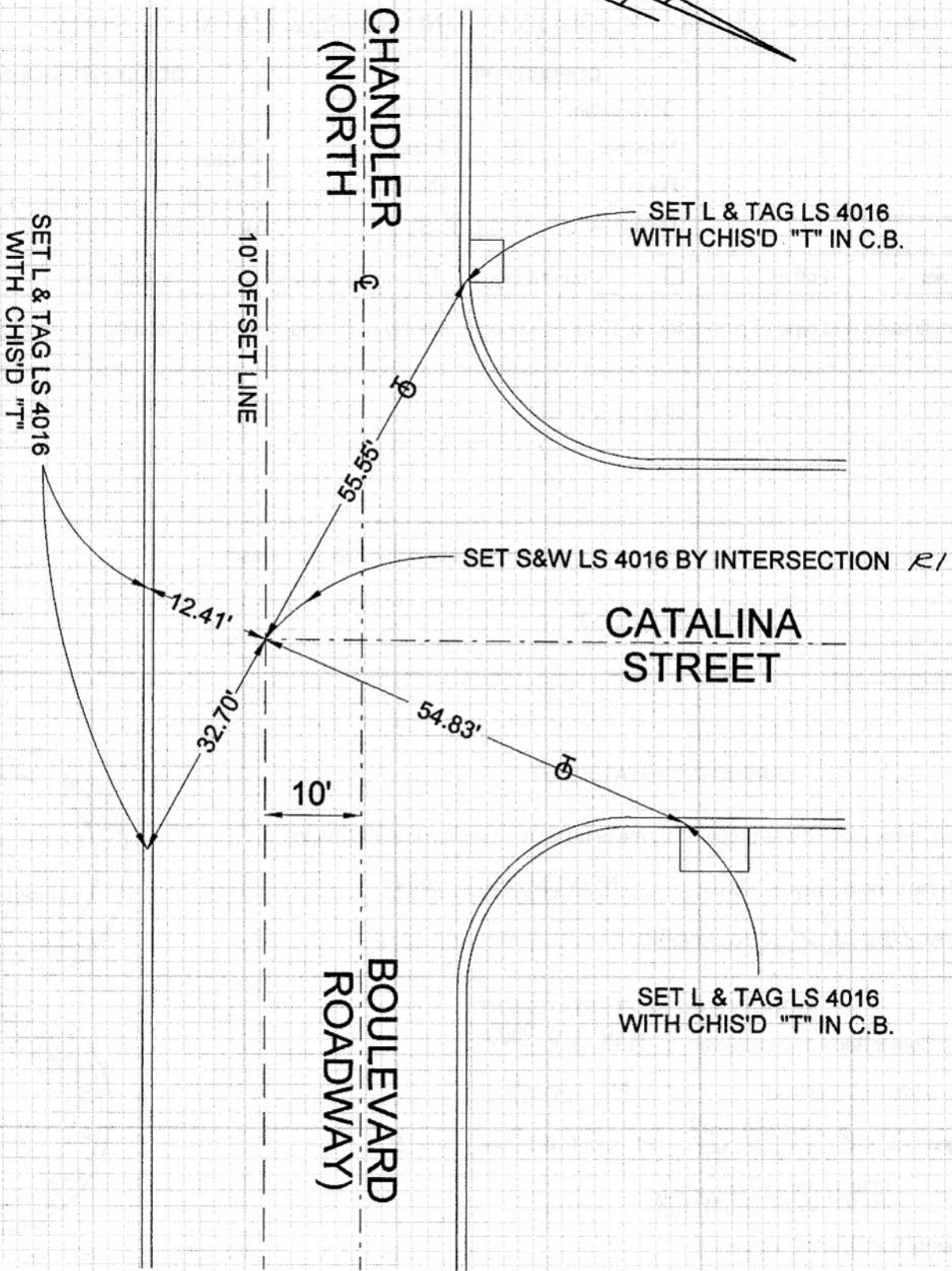


FB-336 P. 143



R1 = R.S. 192 32/33
(RECORD OF SURVEY)

TIES-FILED AS SUBMITTED

PWFB 1718

CORNER RECORD

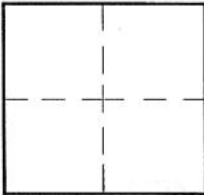
500

Document Number _____

City of BURBANK

County of Los Angeles, California

Brief Legal Description CHANDLER BOULEVARD (NO. RDWY) & CATALINA STREET



CORNER TYPE

Govt. Corner Control
 Meander Property
 Rancho Other
 Date of Survey 11-01-04

COORDINATES (Optional)

N. _____
 E. _____
 Zone _____ NAD27 NAD83
 NAD83 Epoch _____
 Elev. _____
 Vert. Datum: NGVD29 NAVD88
 Meas. Units: Metric Imperial

Corner - Left as found Found & tagged Established Reestablished Rebuilt

Identification and type of corner found: Evidence used to identify or procedure used to establish or reestablish the corner:

SEE PLAT

A description of the physical condition of the monument as found and as set or reset:

SEE PLAT

SURVEYOR'S STATEMENT

This Corner Record was prepared by me or under my direction in conformance
 with the Land Surveyors' Act on NOVEMBER, 2004

Signed David L. Lindell P.L.S. or R.C.E. No. LS 4016



COUNTY SURVEYOR'S STATEMENT

This Corner Record was received MAR 16 2005

and examined and filed MAR 16 2005

Signed Stev G. Steinhoff P.L.S. or R.C.E. No. 6649

Title: DEPUTY COUNTY SURVEYOR



County Surveyor's Comment _____