

Type of Survey : Centerline Transit Ties

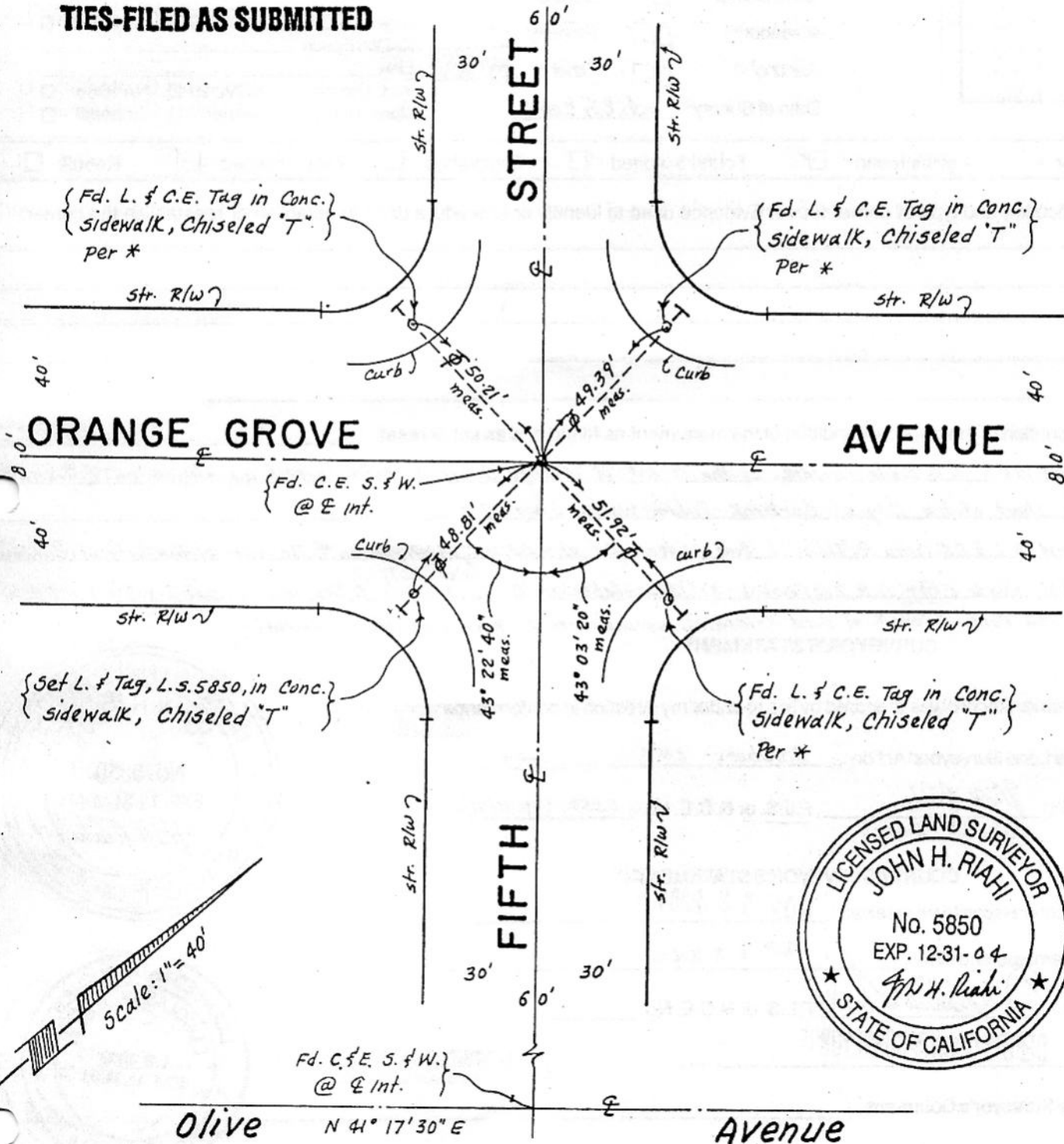
F.B. : 336 Pg. : 129

Surveyed By : John H. Riahi, L.S. No.5850

Date : Oct. 23, 2004

Tract or Parcel Map : Town of Burbank , M.R. 17, Pgs. 19 -23

TIES-FILED AS SUBMITTED



* Refer To E Transit Ties of the City of Burbank Public Works Engineering, F.B. 322, Page. 403.

original

PWFB 1819

CORNER RECORD

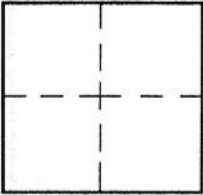
Document Number

329

City of Burbank

County of Los Angeles, California

Brief Legal Description INTERSECTION ORANGE GROVE AVE & FIFTH ST.



CORNER TYPE

Govt. Corner Control
 Meander Property
 Rancho Other
 Date of Survey Oct. 23, 2004

COORDINATES (Optional)

N. _____
 E. _____
 Zone _____ NAD27 NAD83
 NAD83 Epoch _____
 Elev. _____
 Vert. Datum: NGVD29 NAVD88
 Meas. Units: Metric Imperial

Corner - Left as found. Found & tagged Established Reestablished Rebuilt

Identification and type of corner found: Evidence used to identify or procedure used to establish or reestablish the corner:

A description of the physical condition of the monument as found and as set or reset:

- 1) Found 5' W. & 4 Nails Stradler at the E Int. of Orange Grove & Fifth street, as shown on E Transit Tie sheet of the City of Burbank Public Works Engrg. F.B. 322/403
- 2) Found 3 L. & C.E. Tags & Ties in Conc. sidewalks of said int., as shown on E Tie sht. of the City of Burbank Public Work Engrg. F.B. 322/403.
- 3) Re-established the Lost S.E.'ly E Ties mon. & set L. & Tag, L.S. 5850, in New Conc. sidewalk of said Intersection, as shown on the Reverse of this document.

SURVEYOR'S STATEMENT

This Corner Record was prepared by me or under my direction in conformance

with the Land Surveyors' Act on October 23, 2004

Signed John H. Riahi P.L.S. or R.C.E. No. 5850, EXP. 12/31/04
 John H. Riahi



COUNTY SURVEYOR'S STATEMENT

This Corner Record was received NOV 18 2004

and examined and filed NOV 23 2004

Signed Douglas W. Joslin P.L.S. or R.C.E. No. _____
 Title: DEPUTY COUNTY SURVEYOR



County Surveyor's Comment _____

TIES-FILED AS SUBMITTED

CH