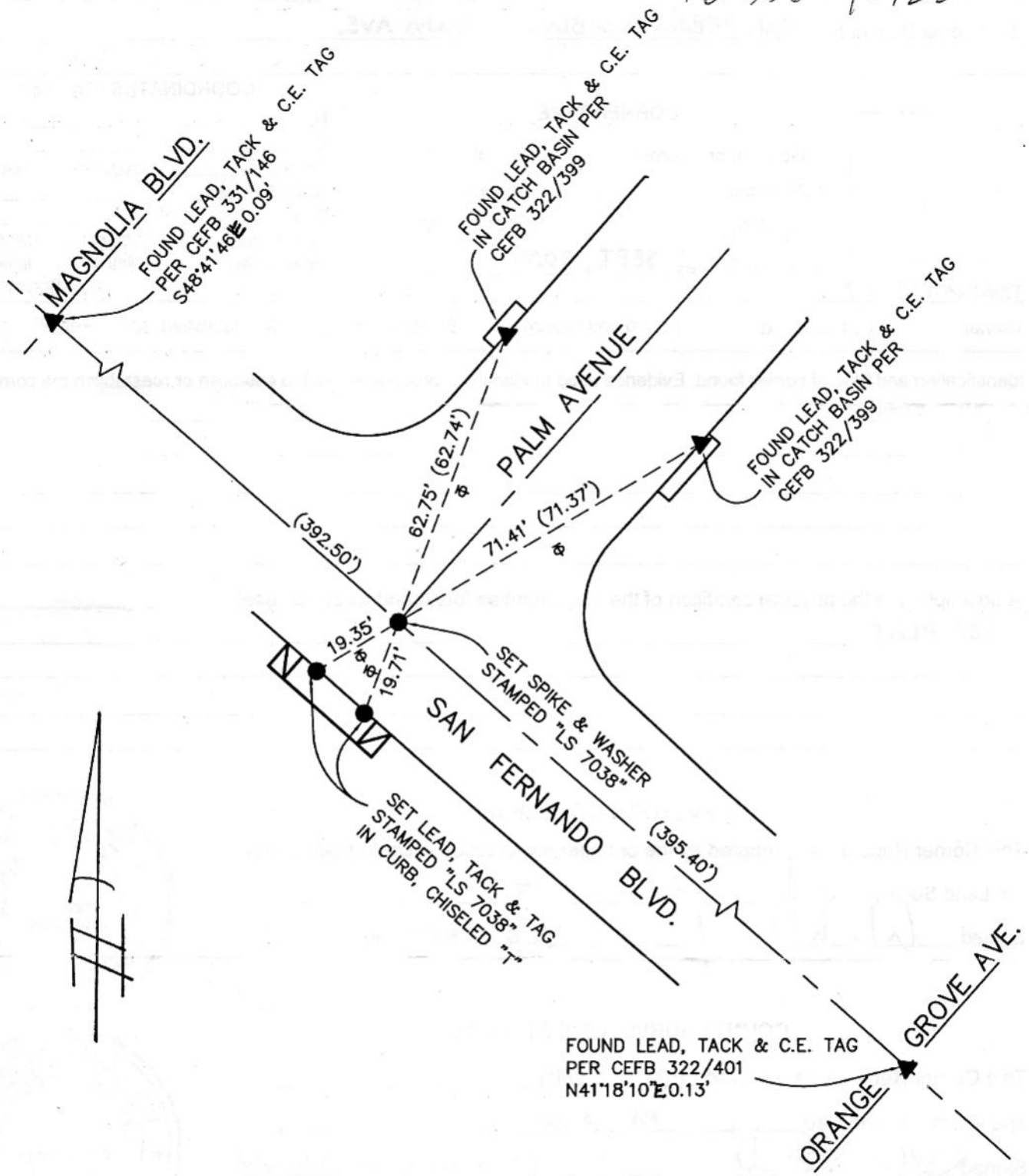




FB-336 P. 123



- ▲ FOUND MONUMENT AS NOTED
- SET MONUMENT AS NOTED
- ( ) RECORD DISTANCE

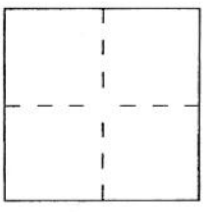
CORNER RECORD <sup>PWFB</sup> 1719

Document Number 608

City of BURBANK

County of LOS ANGELES, California

Brief Legal Description SAN FERNANDO BLVD. } PALM AVE.



CORNER TYPE

- Government Corner  Control
- Meander  Property
- Rancho  Other

Date of Survey SEPT., 2004

COORDINATES (Optional)

N. \_\_\_\_\_  
 E. \_\_\_\_\_  
 Zone \_\_\_\_\_ NAD27  NAD83   
 NAD83 Epoch \_\_\_\_\_  
 Elev. \_\_\_\_\_  
 Vert. Datum: NGVD29  NAVD88   
 Meas. Units: Metric  Imperial   
 U.S. Survey foot

TBM: LA 533 H-7

Corner — Left as found  Found and tagged  Established  Reestablished  Rebuilt

Identification and type of corner found; Evidence used to identify or procedure used to establish or reestablish the corner:  
SEE PLAT.

A description of the physical condition of the monument as found and as set or reset:  
SEE PLAT.

SURVEYOR'S STATEMENT

This Corner Record was prepared by me or under my direction in conformance with the Land Surveyor's Act on OCT. 11, 2004

Signed [Signature] L.S. or R.C.E. No. 7038



COUNTY SURVEYOR'S STATEMENT

This Corner Record was received OCT 12 2004

and examined and filed NOV 15 2004

Signed [Signature] L.S. or R.C.E. No. PLS 6648

Title DEPUTY COUNTY SURVEYOR



County Surveyor's Comment \_\_\_\_\_

Jim 11-9-04