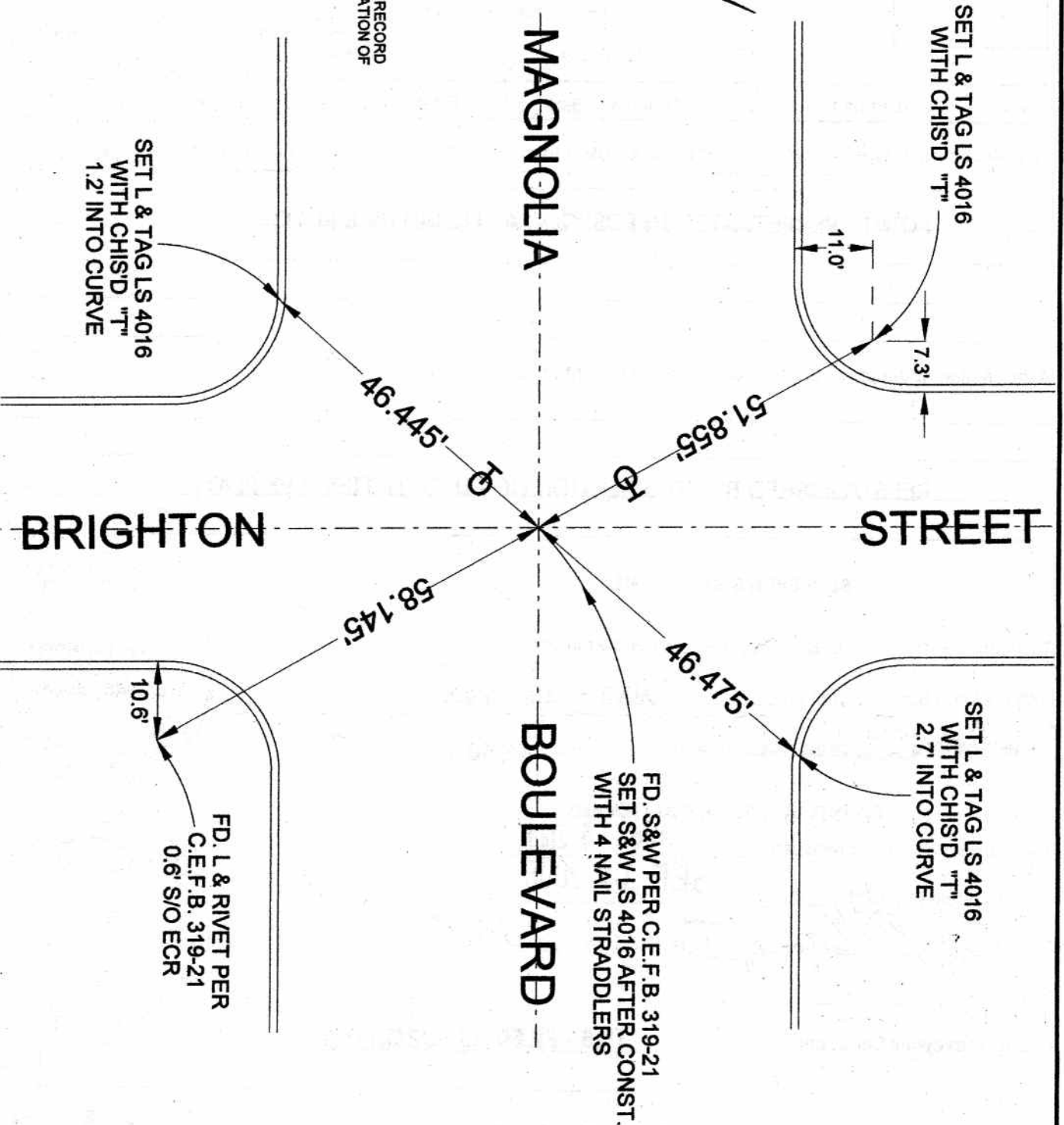
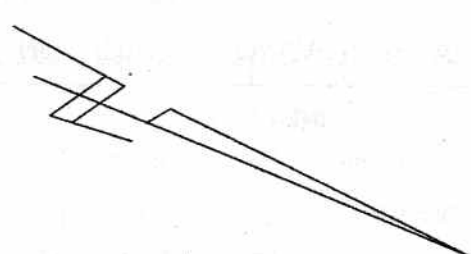


FB 336 P. 324

THE PURPOSE OF THIS CORNER RECORD IS TO DOCUMENT THE PERPETUATION OF FOUND MONUMENT(S) ONLY.



FD. S&W PER C.E.F.B. 319-21  
SET S&W LS 4016 AFTER CONST.  
WITH 4 NAIL STRADDLERS

TIES - FILED AS SUBMITTED

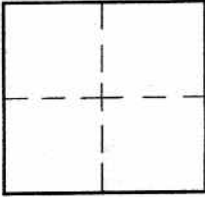
# CORNER RECORD

Document Number \_\_\_\_\_

City of BURBANK

County of Los Angeles, California

Brief Legal Description MAGNOLIA BOULEVARD & BRIGHTON STREET



### CORNER TYPE

Govt. Corner  Control   
 Meander  Property   
 Rancho  Other   
 Date of Survey 7-29-06

### COORDINATES (Optional)

N. \_\_\_\_\_  
 E. \_\_\_\_\_  
 Zone \_\_\_\_\_ NAD27  NAD83   
 NAD83 Epoch \_\_\_\_\_  
 Elev. \_\_\_\_\_  
 Vert. Datum: NGVD29  NAVD88   
 Meas. Units: Metric  Imperial

Corner - Left as found  Found & tagged  Established  Reestablished  Rebuilt

Identification and type of corner found: Evidence used to identify or procedure used to establish or reestablish the corner:

**POINTS PERPETUATED IN POSITION AS FOUND (SEE PLAT)**

A description of the physical condition of the monument as found and as set or reset:

**REESTABLISHED BY INTERSECTION OF TANGENT TIES (SEE PLAT)**

### SURVEYOR'S STATEMENT

This Corner Record was prepared by me or under my direction in conformance  
 with the Land Surveyors' Act on AUGUST 10, 2006

Signed David Lindell P.L.S. or R.C.E. No. LS 4016



### COUNTY SURVEYOR'S STATEMENT

This Corner Record was received AUG 15 2006

and examined and filed SEP 12 2006

Signed Curt M. O'Bryan P.L.S. or R.C.E. No. 6388

Title: \_\_\_\_\_



County Surveyor's Comment **TIES - FILED AS SUBMITTED**

MAN 9-11-06