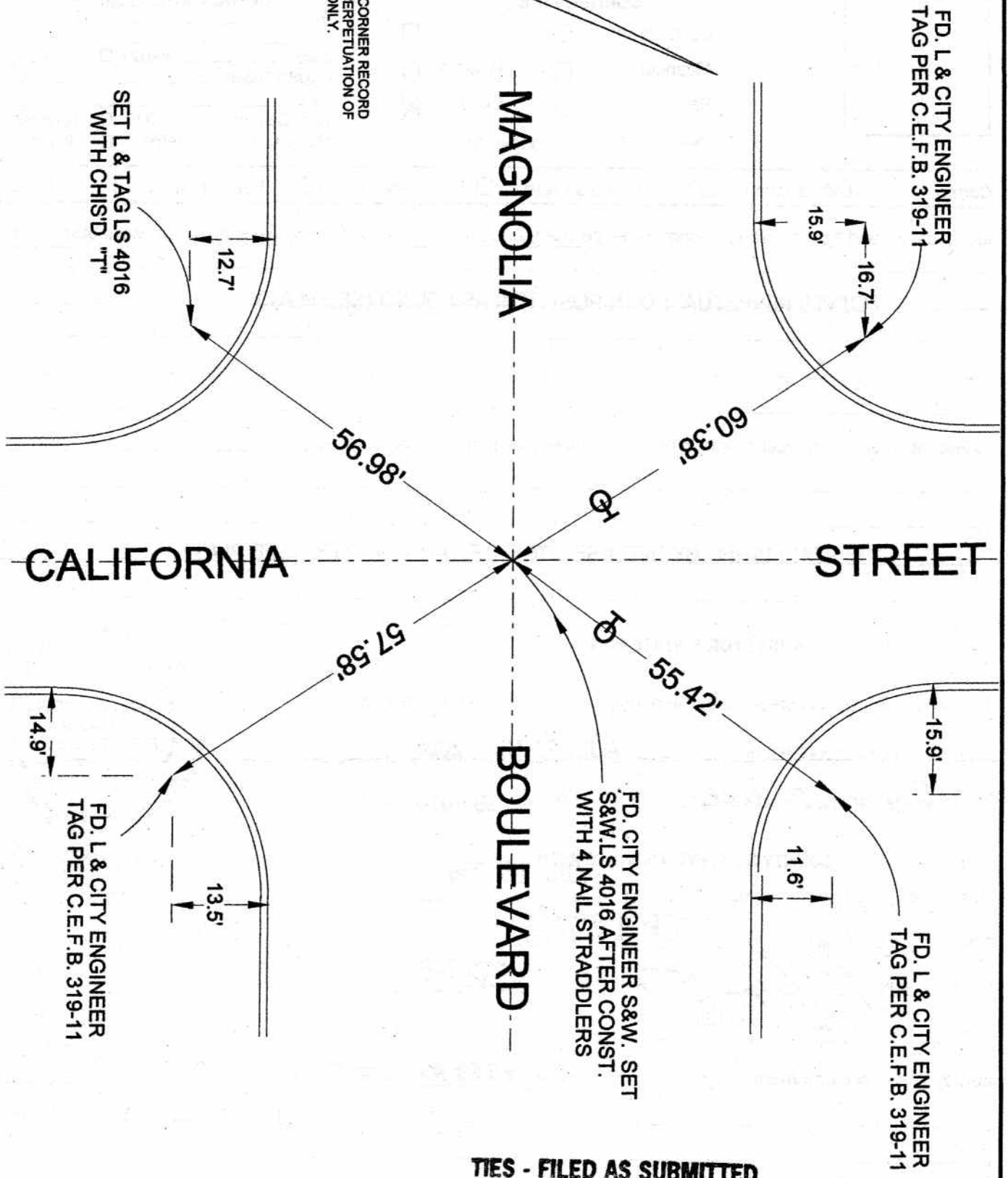


FB 336 P. 308

THE PURPOSE OF THIS CORNER RECORD IS TO DOCUMENT THE PERPETUATION OF FOUND MONUMENT(S) ONLY.



TIES - FILED AS SUBMITTED

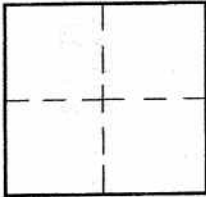
CORNER RECORD

Document Number _____

City of BURBANK

County of Los Angeles, California

Brief Legal Description MAGNOLIA BOULEVARD & CALIFORNIA STREET



CORNER TYPE

Govt. Corner Control
 Meander Property
 Rancho Other
 Date of Survey 7-29-06

COORDINATES (Optional)

N. _____
 E. _____
 Zone _____ NAD27 NAD83
 NAD83 Epoch _____
 Elev. _____
 Vert. Datum: NGVD29 NAVD88
 Meas. Units: Metric Imperial

Corner - Left as found Found & tagged Established Reestablished Rebuilt

Identification and type of corner found: Evidence used to identify or procedure used to establish or reestablish the corner:

POINTS PERPETUATED IN POSITION AS FOUND (SEE PLAT)

A description of the physical condition of the monument as found and as set or reset: _____

REESTABLISHED BY INTERSECTION OF TANGENT TIES (SEE PLAT)

SURVEYOR'S STATEMENT

This Corner Record was prepared by me or under my direction in conformance
 with the Land Surveyors' Act on AUGUST 10, 2006

Signed David L. Lindell P.L.S. or R.C.E. No. LS 4016



COUNTY SURVEYOR'S STATEMENT

This Corner Record was received AUG 15 2006
 and examined and filed SEP 12 2006

Signed Curt M. O'Bryan P.L.S. or R.C.E. No. 6388

Title: DEPUTY COUNTY SURVEYOR



County Surveyor's Comment TIES - FILED AS SUBMITTED

7-11-06