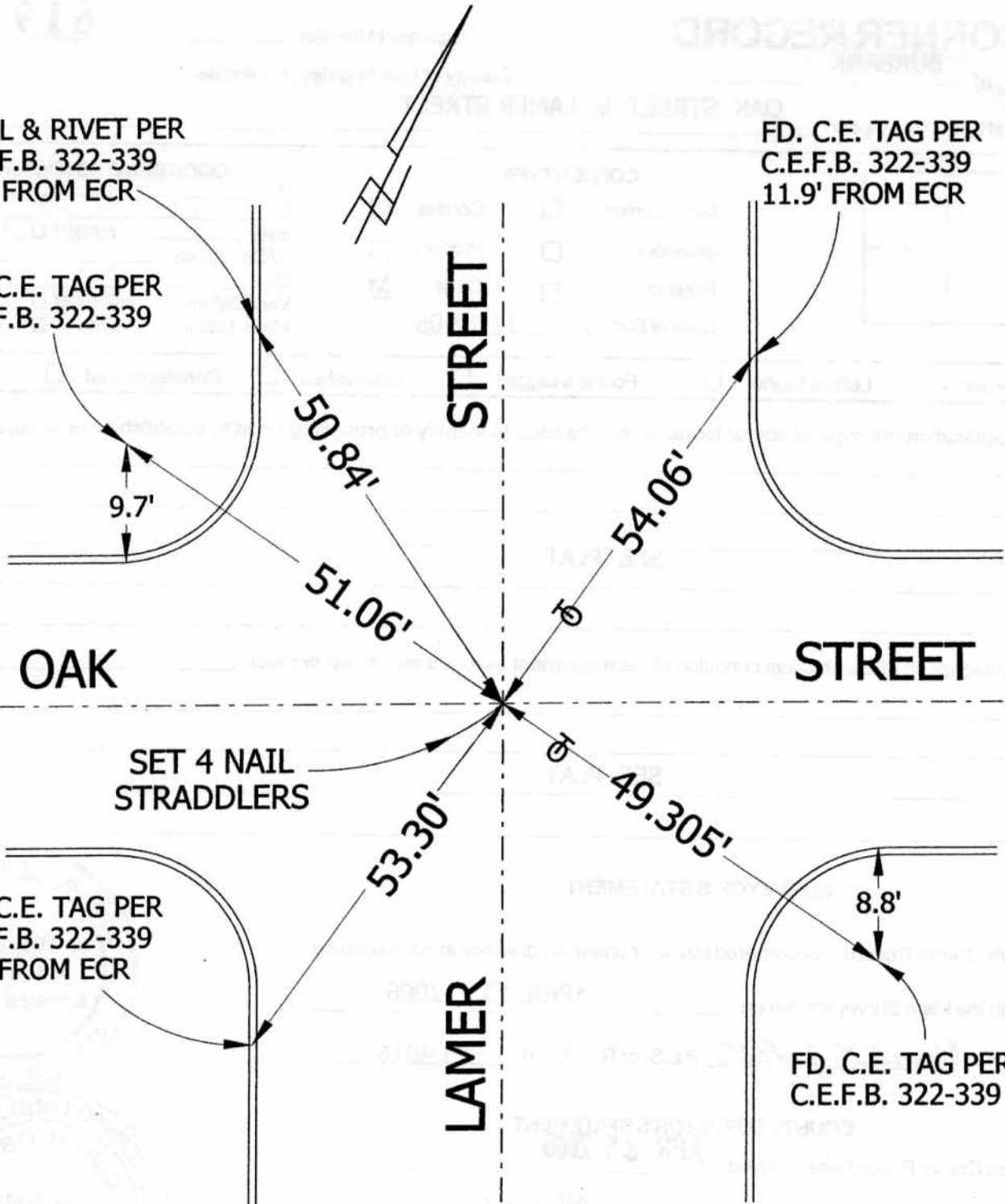


FD. L & RIVET PER
C.E.F.B. 322-339
2.7' FROM ECR

FD. C.E. TAG PER
C.E.F.B. 322-339
11.9' FROM ECR

FD. C.E. TAG PER
C.E.F.B. 322-339



OAK

STREET

SET 4 NAIL
STRADDLERS

STREET

LAMER

FD. C.E. TAG PER
C.E.F.B. 322-339
4.8' FROM ECR

FD. C.E. TAG PER
C.E.F.B. 322-339

9.7'

8.8'

50.84'

51.06'

54.06'

49.305'

53.30'

CORNER RECORD

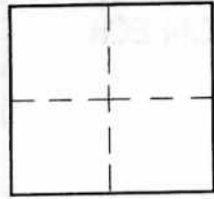
Document Number _____

City of BURBANK

County of Los Angeles, California

OAK STREET & LAMER STREET

Brief Legal Description _____



CORNERTYPE

Govt. Corner Control
 Meander Property
 Rancho Other
 Date of Survey 11-12-05

COORDINATES (Optional)

N. _____
 E. _____
 Zone _____ NAD27 NAD83
 NAD83 Epoch _____
 Elev. _____
 Vert. Datum: NGVD29 NAVD88
 Meas. Units: Metric Imperial

Corner - Left as found Found & tagged Established Reestablished Rebuilt

Identification and type of corner found: Evidence used to identify or procedure used to establish or reestablish the corner:

SEE PLAT

A description of the physical condition of the monument as found and as set or reset: _____

SEE PLAT

SURVEYOR'S STATEMENT

This Corner Record was prepared by me or under my direction in conformance
 with the Land Surveyors' Act on APRIL 13, 2006

Signed David L. Lindell P.L.S. or R.C.E. No. LS 4016



COUNTY SURVEYOR'S STATEMENT

This Corner Record was received APR 25 2006
 and examined and filed MAY 11 2006

Signed Curt M. O'Bryan P.L.S. or R.C.E. No. 6388

Title: DEPUTY COUNTY SURVEYOR



County Surveyor's Comment _____

JMG 5-11-6